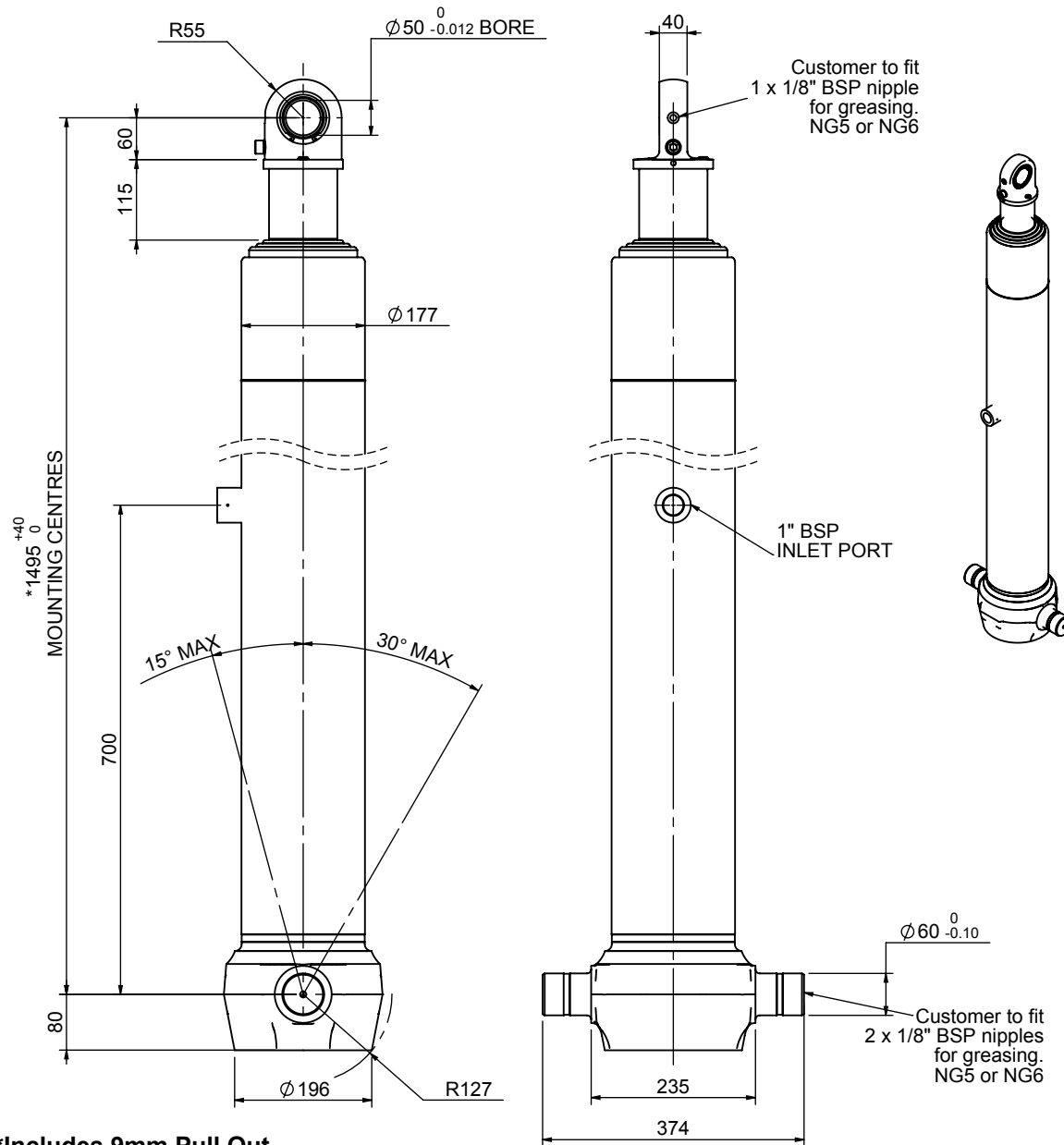


Cylinder 4 stage front end with spherical eye

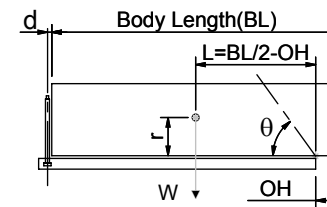


*Includes 9mm Pull Out.
Last Stage Chrome Plated

CS150S44606B70A05

SPECIFICATION		TIPPING CAPACITY : 36-52 TONNES***		
Stage	Diameter	Length	Stroke	Swept Volume
-	-	-	-	-
-	-	-	-	-
0	177	1375	-	-
1	155	1340	1127	21
2	136	1340	1147	17
3	117	1340	1162	12
4	98	1440	1167	9
Total (+5/-10)			4603	59
Final stroke reduced by	0	Priming Volume		15
Cylinder Mass (Kg)	160	Total Volume (Litres)		74
Maximum Pressure (Bar)	190	Max. first stage thrust		225 KN

***TIPPING CAPACITY AT WORKING PRESSURE



BODY LENGTH (BL)						OH
6050		6300		6550		
39	47°	37	45°	36	43°	150
44	50°	42	47°	40	45°	450
52	53°	48	50°	46	48°	750

d = 0; r = 750; Working Pressure 175 bar

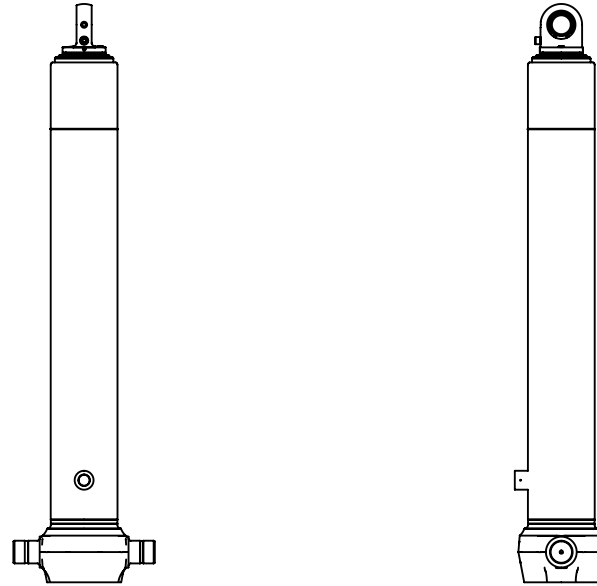
For guidance only;

Higher working pressures and tipping capacities may be possible.

To check your application email - applications@edbro.co.uk

NOTES

1. This cylinder is for lifting purposes only and side load conditions should be avoided
2. Cylinder is painted in primer paint to RAL5013
3. Refer to www.edbro.com for:-
 - Bracket details
 - Installation instructions that must be observed
 - Correct oil selection
 - An explanation of tipping capacity



CS150S44606B19A01