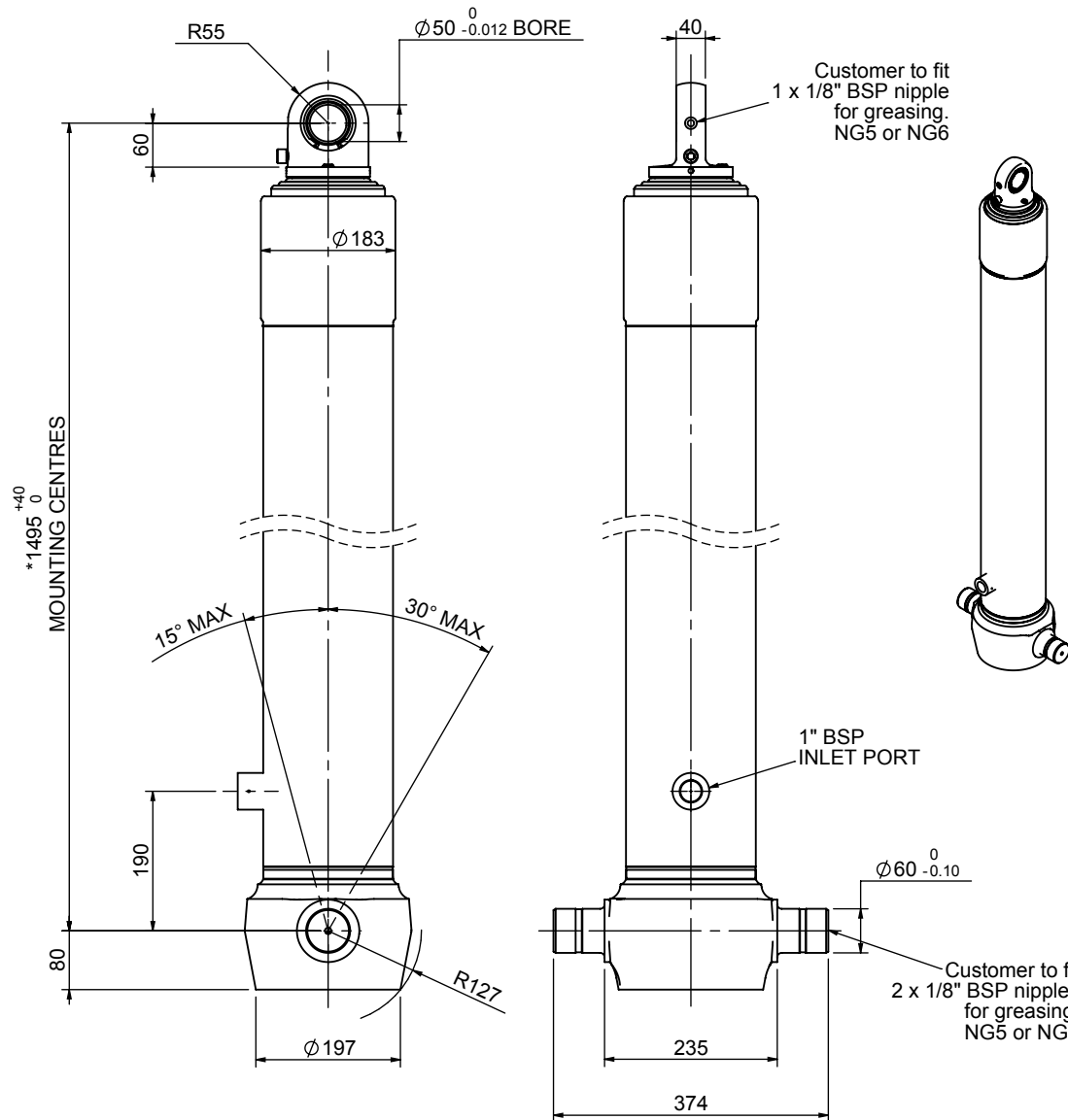


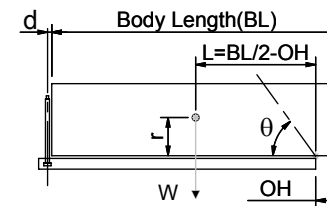
Cylinder 4 stage front end with spherical eye

CS150S45006B19A01



SPECIFICATION		TIPPING CAPACITY : 35-49 TONNES***		
Stage	Diameter	Length	Stroke	Swept Volume
-	-	-	-	-
-	-	-	-	-
0	177	1475	-	-
1	155	1440	1227	23
2	136	1440	1247	18
3	117	1440	1262	14
4	98	1440	1267	10
Total (+5/-10)			5003	65
Final stroke reduced by	0	Priming Volume		16
Cylinder Mass (Kg)	170	Total Volume (Litres)		81
Maximum Pressure (Bar)	190	Max. first stage thrust		225 KN

***TIPPING CAPACITY AT WORKING PRESSURE



BODY LENGTH (BL)						OH
6350		6600		6850		
37	49°	36	47°	35	45°	150
42	51°	40	49°	38	47°	450
49	55°	45	52°	43	50°	750

d = 0; r = 750; Working Pressure 165 bar

For guidance only;

Higher working pressures and tipping capacities may be possible.

To check your application email - applications@edbro.co.uk

NOTES

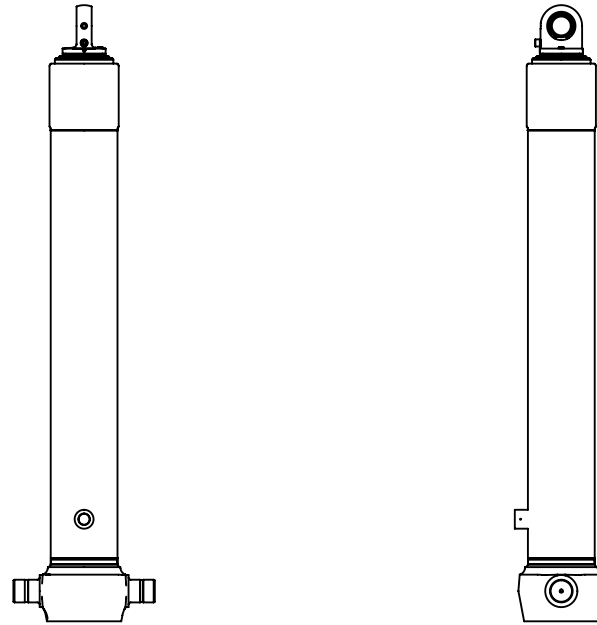
1. This cylinder is for lifting purposes only and side load conditions should be avoided
2. Cylinder is painted in primer paint to RAL5013
3. Refer to www.edbro.com for:-
 - Bracket details
 - Installation instructions that must be observed
 - Correct oil selection
 - An explanation of tipping capacity

*Includes 9mm Pull Out.
Last Stage Chrome Plated



Edbro plc
Nelson Street, Bolton, England, BL3 2JJ
Tel +44 (0) 1204 528888 Fax +44 (0) 1204 531957
Email: postmaster@edbro.com Web: www.edbro.com

Technical Specifications are subject to change without notice
Date Created/Updated: 04 September 2012
Refer www.edbro.com to confirm latest specification
All dimensions are in 'mm', unless otherwise stated



CS150S45006B19A01