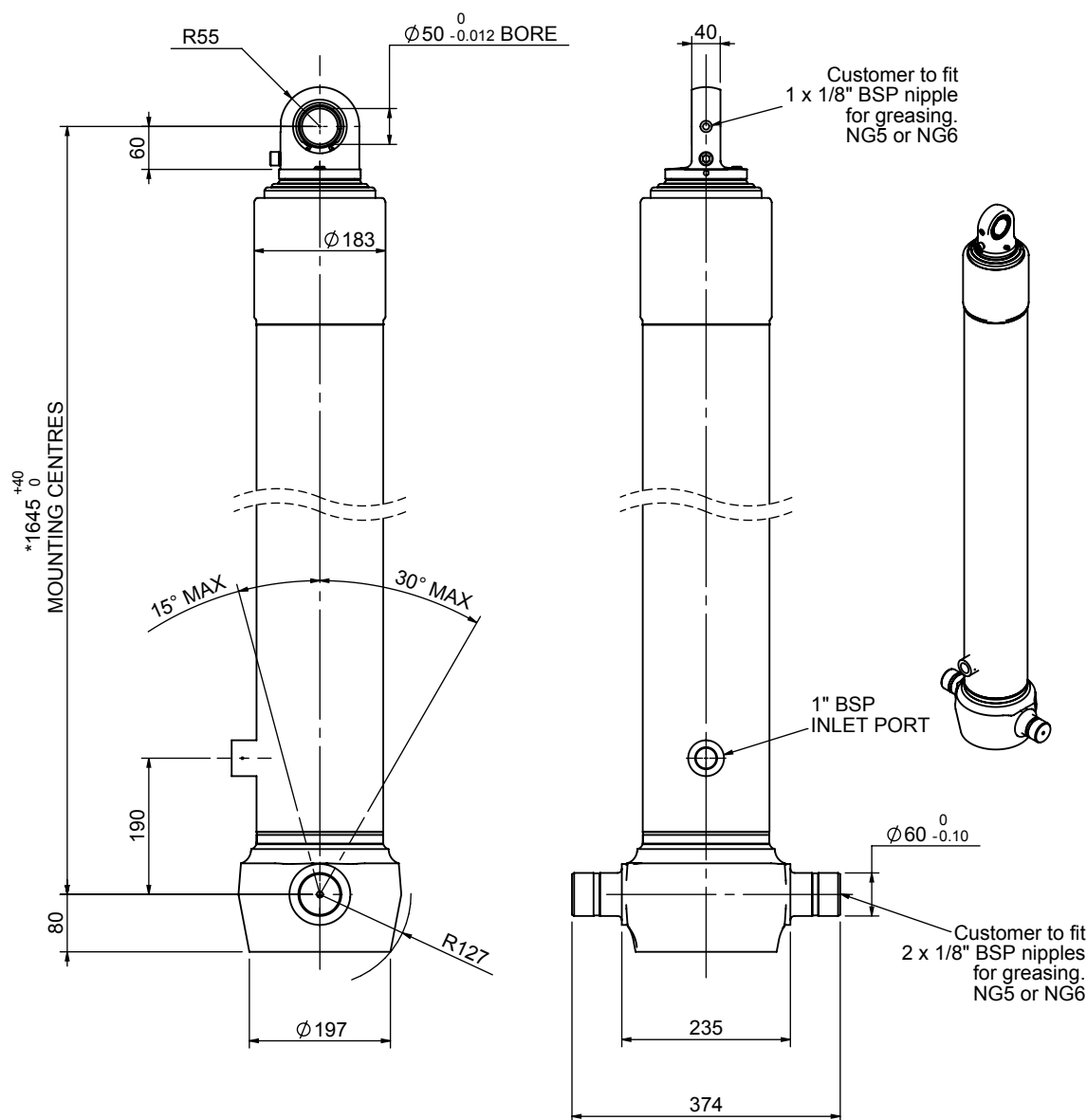


# Cylinder 4 stage front end with spherical eye

CS150S45606B19A01



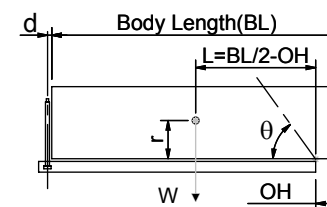
\*Includes 9mm Pull Out.  
Last Stage Chrome Plated

## SPECIFICATION

TIPPING CAPACITY : 27-37 TONNES\*\*\*

Stage	Diameter	Length	Stroke	Swept Volume
-	-	-	-	-
-	-	-	-	-
0	177	1625	-	-
1	155	1590	1377	26
2	136	1590	1397	20
3	117	1590	1412	15
4	98	1590	1417	11
Total (+5/-10)			5603	72
Final stroke reduced by	0	Priming Volume		18
Cylinder Mass (Kg)	183	Total Volume (Litres)		90
Maximum Pressure (Bar)	190	Max. first stage thrust		225 KN

## \*\*\*TIPPING CAPACITY AT WORKING PRESSURE



BODY LENGTH (BL)						OH
7000	7500	8000				
30	49°	28	46°	27	42°	150
33	52°	31	48°	29	44°	450
37	55°	34	50°	32	46°	750

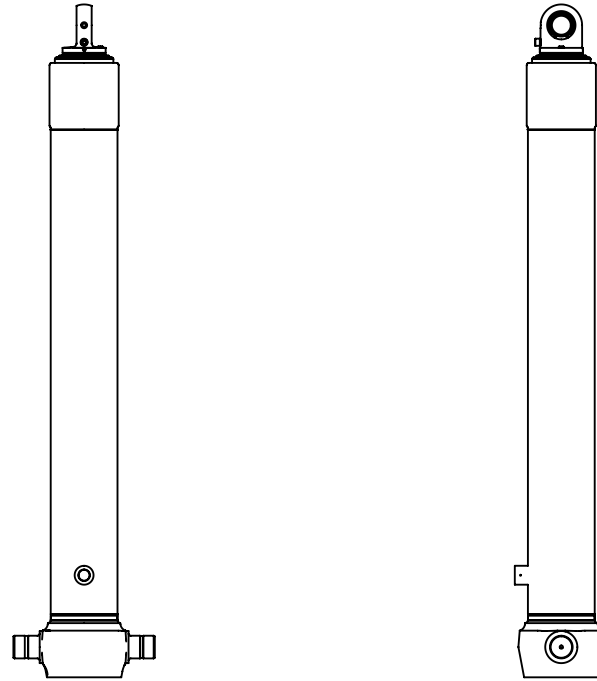
d = 0; r = 750; Working Pressure 135 bar

### For guidance only;

Higher working pressures and tipping capacities may be possible.  
To check your application email - [applications@edbro.co.uk](mailto:applications@edbro.co.uk)

## NOTES

1. This cylinder is for lifting purposes only and side load conditions should be avoided
2. Cylinder is painted in primer paint to RAL5013
3. Refer to [www.edbro.com](http://www.edbro.com) for:-
  - Bracket details
  - Installation instructions that must be observed
  - Correct oil selection
  - An explanation of tipping capacity



CS150S45606B19A01