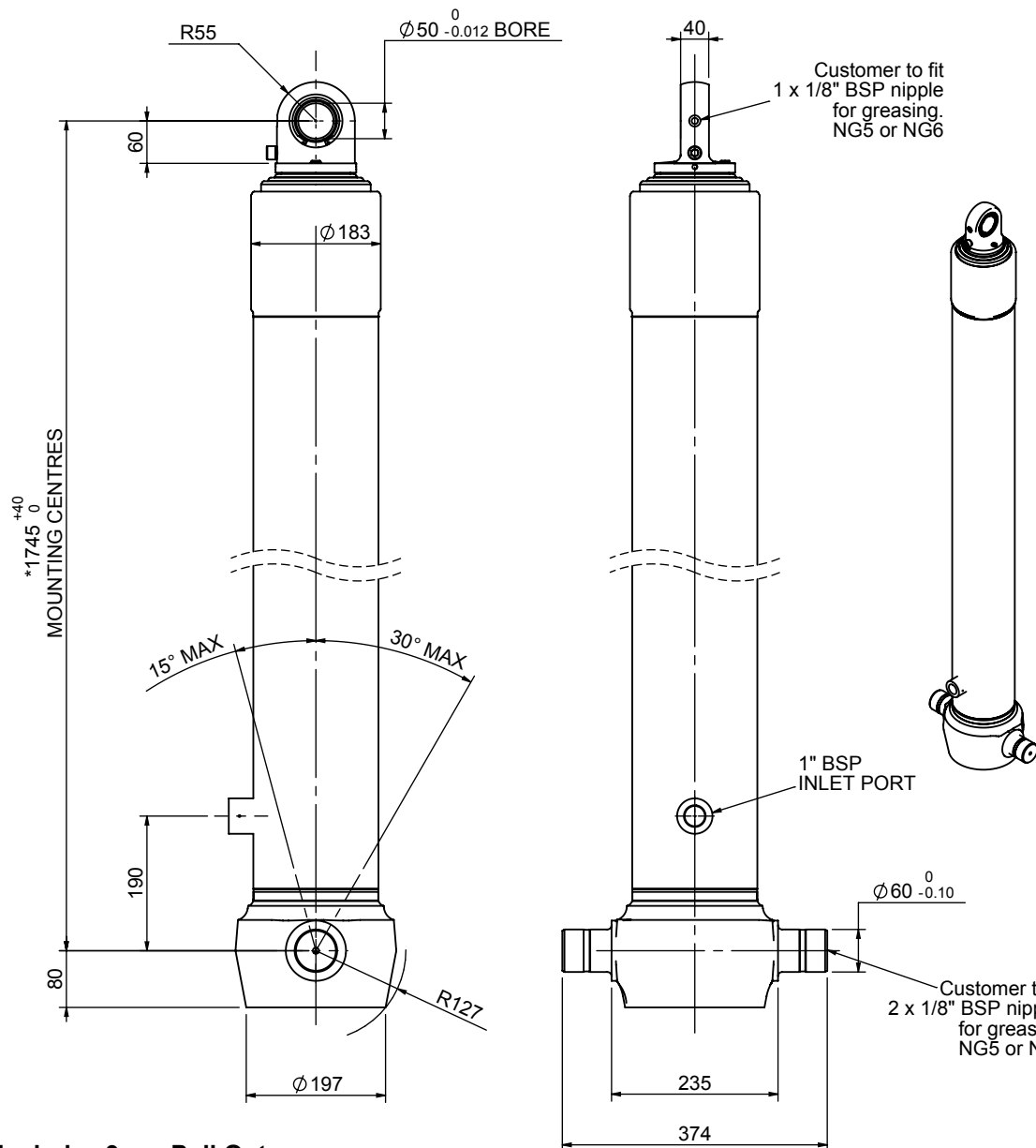


Cylinder 4 stage front end with spherical eye

CS150S46006B19A01

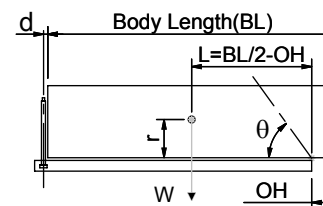


*Includes 9mm Pull Out.
Last Stage Chrome Plated

SPECIFICATION

| SPECIFICATION | | TIPPING CAPACITY : 24-32 TONNES*** | | |
|-------------------------|----------|------------------------------------|--------|--------------|
| Stage | Diameter | Length | Stroke | Swept Volume |
| - | - | - | - | - |
| - | - | - | - | - |
| 0 | 177 | 1725 | - | - |
| 1 | 155 | 1690 | 1477 | 28 |
| 2 | 136 | 1690 | 1497 | 22 |
| 3 | 117 | 1690 | 1512 | 16 |
| 4 | 98 | 1690 | 1517 | 11 |
| Total (+5/-10) | | | 6003 | 77 |
| Final stroke reduced by | 0 | Priming Volume | | 20 |
| Cylinder Mass (Kg) | 193 | Total Volume (Litres) | | 97 |
| Maximum Pressure (Bar) | 190 | Max. first stage thrust | | 225 KN |

***TIPPING CAPACITY AT WORKING PRESSURE



| BODY LENGTH (BL) | | | | | | OH |
|------------------|-----|------|-----|------|-----|-----|
| 7500 | | 8000 | | 8500 | | |
| 26 | 49° | 25 | 46° | 24 | 43° | 150 |
| 28 | 52° | 27 | 48° | 25 | 45° | 450 |
| 32 | 54° | 29 | 50° | 27 | 46° | 750 |

d = 0; r = 750; Working Pressure 120 bar

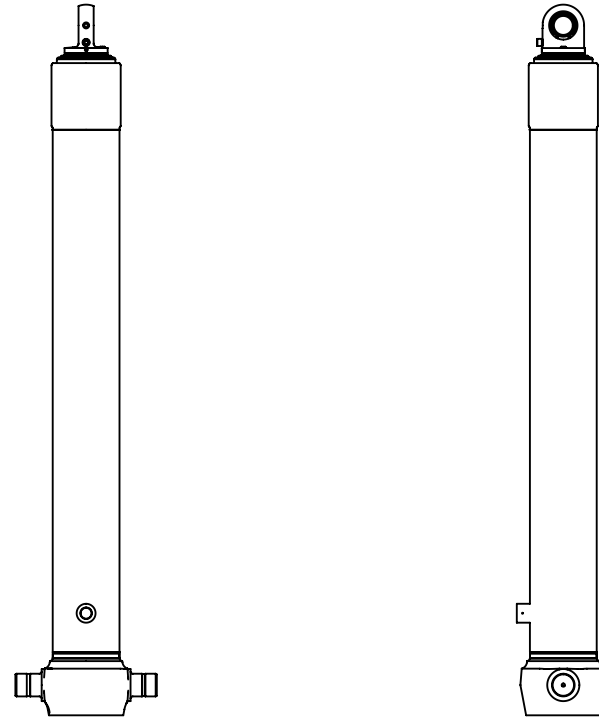
For guidance only;

Higher working pressures and tipping capacities may be possible.

To check your application email - applications@edbro.co.uk

NOTES

1. This cylinder is for lifting purposes only and side load conditions should be avoided
2. Cylinder is painted in primer paint to RAL5013
3. Refer to www.edbro.com for:-
 - Bracket details
 - Installation instructions that must be observed
 - Correct oil selection
 - An explanation of tipping capacity



CS150S46006B19A01