

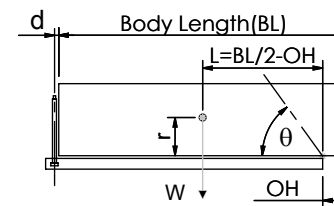
# Cylinder 5 stage front end with spherical eye

CS150S54778B19A01

**SPECIFICATION** **TIPPING CAPACITY : 25-39 TONNES\*\*\***

Stage	Diameter	Length	Stroke	Swept Volume
-	-	-	-	-
0	177	1175	-	-
1	155	1140	927	17
2	136	1140	947	14
3	117	1140	962	10
4	98	1140	967	7
5	79	1140	972	5
Total (+5/-10)			4775	53
Final stroke reduced by	0	Priming Volume		12
Cylinder Mass (Kg)	149	Total Volume (Litres)		65
Maximum Pressure (Bar)	190	Max. first stage thrust		230 KN

**\*\*\*TIPPING CAPACITY AT WORKING PRESSURE**



BODY LENGTH (BL)					OH	
6050	6300	6550				
27	49°	26	47°	25	45°	150
31	52°	30	49°	28	47°	450
38	55°	35	52°	32	50°	750

d = 0; r = 750; Working Pressure 175 bar

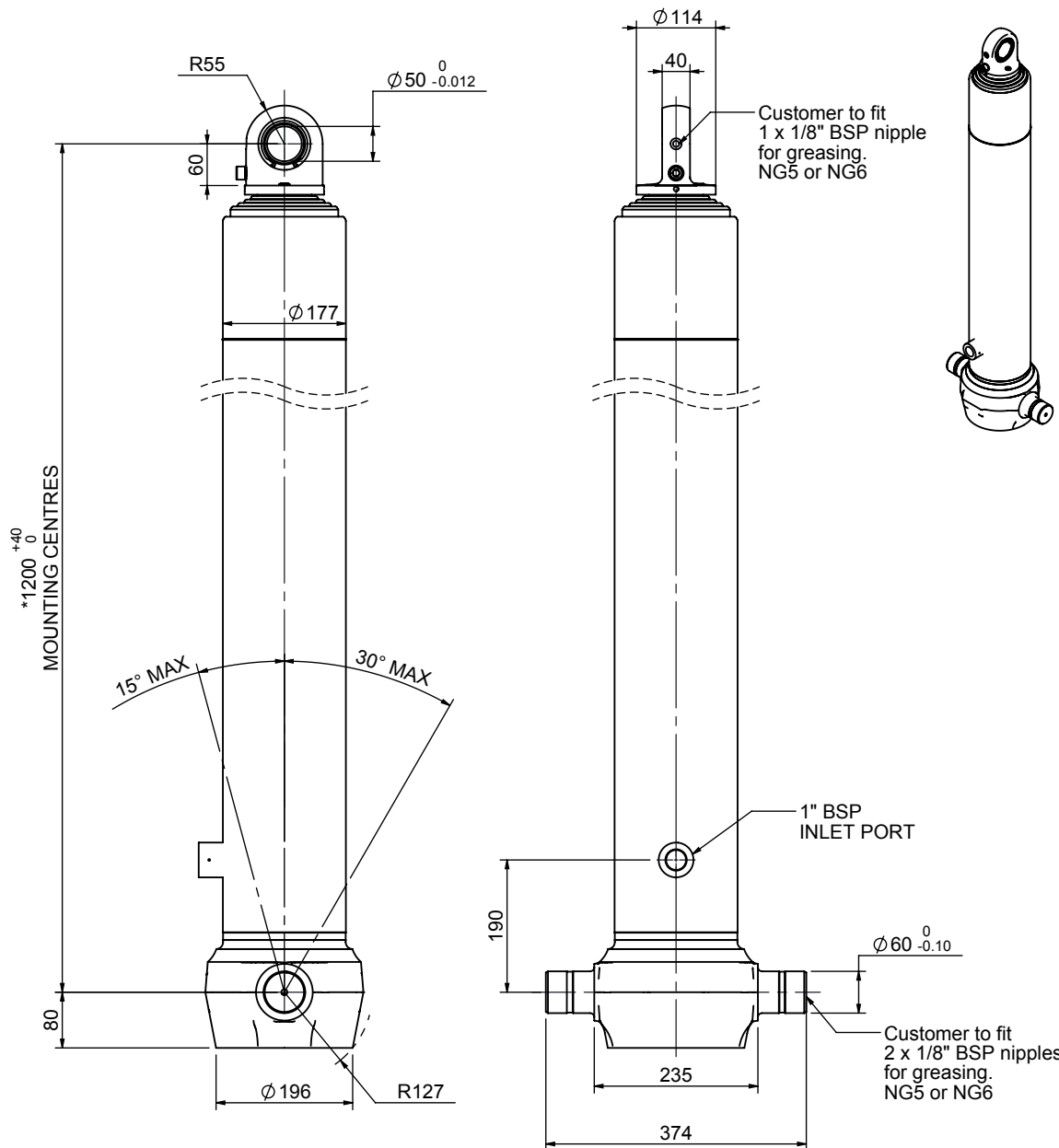
**For guidance only;**

Higher working pressures and tipping capacities may be possible.

To check your application email - [applications@edbro.co.uk](mailto:applications@edbro.co.uk)

**NOTES**

1. This cylinder is for lifting purposes only and side load conditions should be avoided
2. Cylinder is painted in primer paint to RAL5013
3. Refer to [www.edbro.com](http://www.edbro.com) for:-
  - Bracket details
  - Installation instructions that must be observed
  - Correct oil selection
  - An explanation of tipping capacity

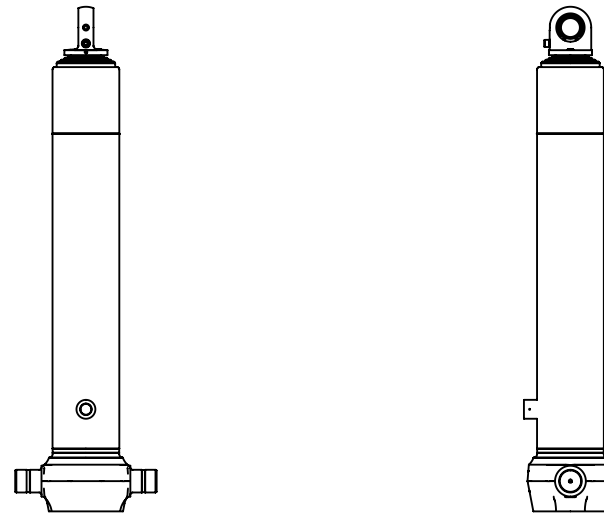


\*Includes 9mm Pull Out. Last Stage Chrome Plated



**Edbro plc**  
 Nelson Street, Bolton, England, BL3 2JJ  
 Tel +44 (0) 1204 528888 Fax +44 (0) 1204 531957  
 Email: [postmaster@edbro.com](mailto:postmaster@edbro.com) Web: [www.edbro.com](http://www.edbro.com)

Technical Specifications are subject to change without notice  
 Date Created/Updated: 19 July 2012  
 Refer [www.edbro.com](http://www.edbro.com) to confirm latest specification  
 All dimensions are in 'mm', unless otherwise stated



CS150S54778B19A01