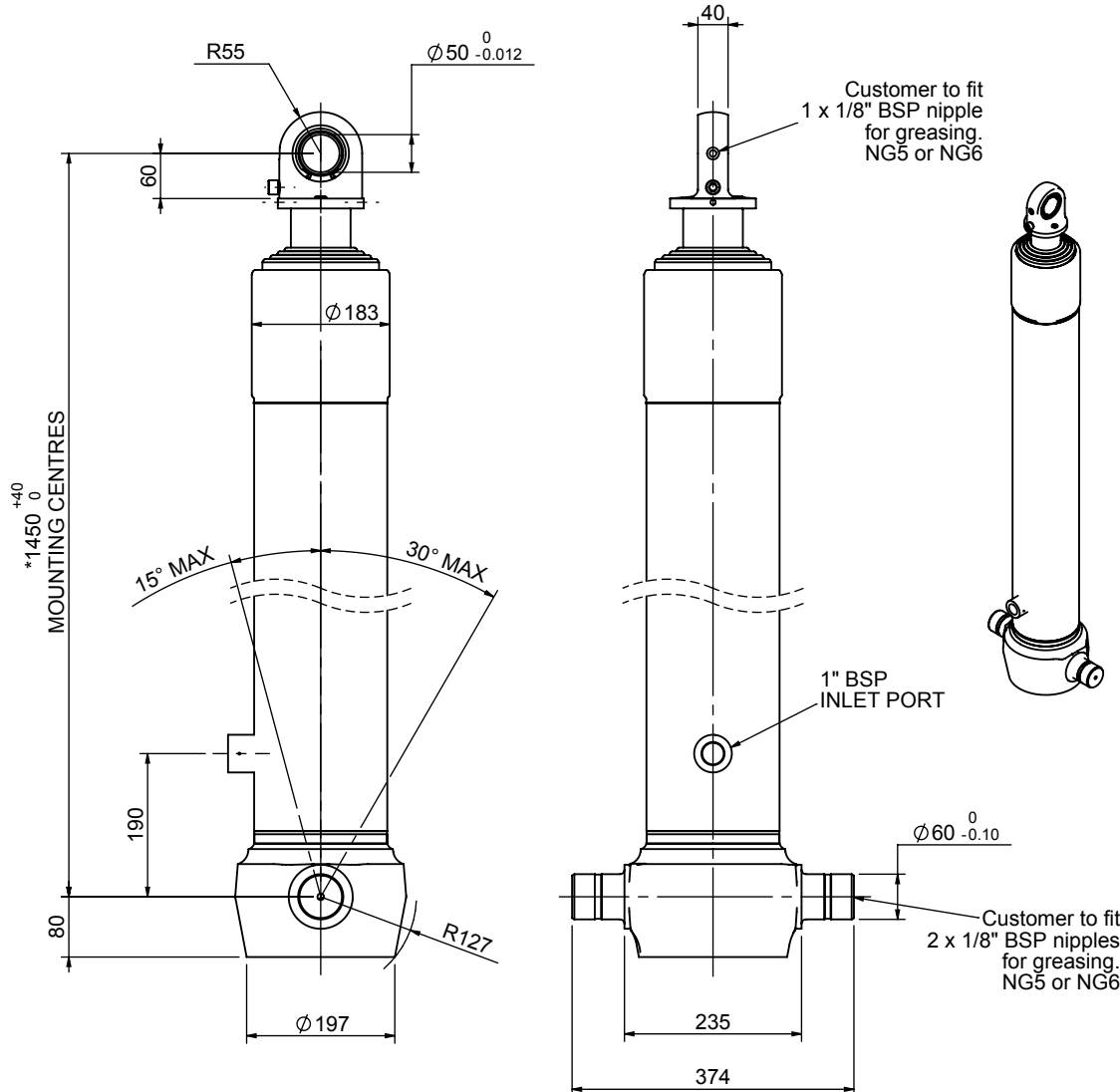


Cylinder 5 stage front end with spherical eye

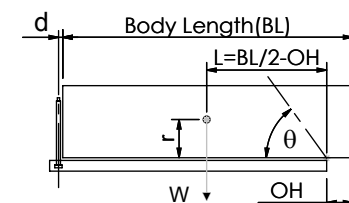
CS150S55778B19A03



SPECIFICATION TIPPING CAPACITY : 16-23 TONNES***

Stage	Diameter	Length	Stroke	Swept Volume
-	-	-	-	-
0	177	1375	-	-
1	155	1340	1127	21
2	136	1340	1147	17
3	117	1340	1162	12
4	98	1340	1167	9
5	79	1390	1172	6
Total (+5/-10)			5775	65
Final stroke reduced by	0	Priming Volume		14
Cylinder Mass (Kg)	171	Total Volume (Litres)		79
Maximum Pressure (Bar)	190	Max. first stage thrust		225 KN

***TIPPING CAPACITY AT WORKING PRESSURE



BODY LENGTH (BL)					OH	
7150	7650	8150				
18	50°	17	46°	16	43°	150
20	52°	18	48°	17	45°	450
23	55°	21	51°	19	47°	750

$d = 0$; $r = 750$; Working Pressure 120 bar
For guidance only;
 Higher working pressures and tipping capacities may be possible.
 To check your application email - applications@edbro.co.uk

NOTES

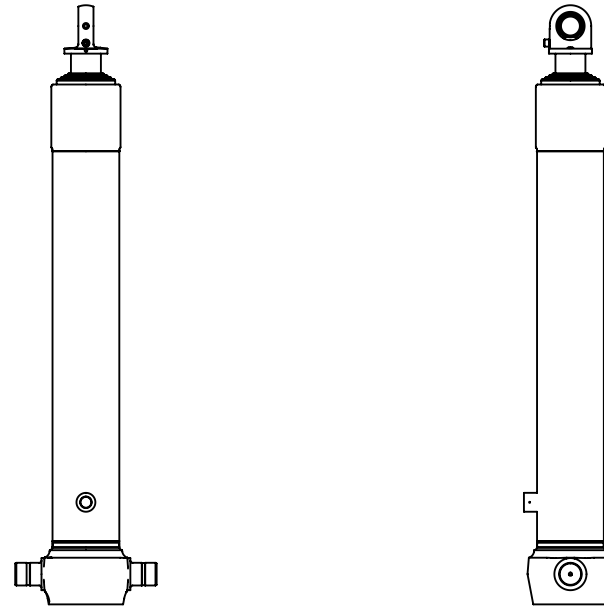
- This cylinder is for lifting purposes only and side load conditions should be avoided
- Cylinder is painted in primer paint to RAL5013
- Refer to www.edbro.com for:-
 - Bracket details
 - Installation instructions that must be observed
 - Correct oil selection
 - An explanation of tipping capacity

*Includes 9mm Pull Out.
 Last Stage Chrome Plated



Edbro plc
 Nelson Street, Bolton, England, BL3 2JJ
 Tel +44 (0) 1204 528888 Fax +44 (0) 1204 531957
 Email: postmaster@edbro.com Web: www.edbro.com

Technical Specifications are subject to change without notice
 Date Created/Updated: 19 July 2012
 Refer www.edbro.com to confirm latest specification
 All dimensions are in 'mm', unless otherwise stated



CS150S55778B19A03