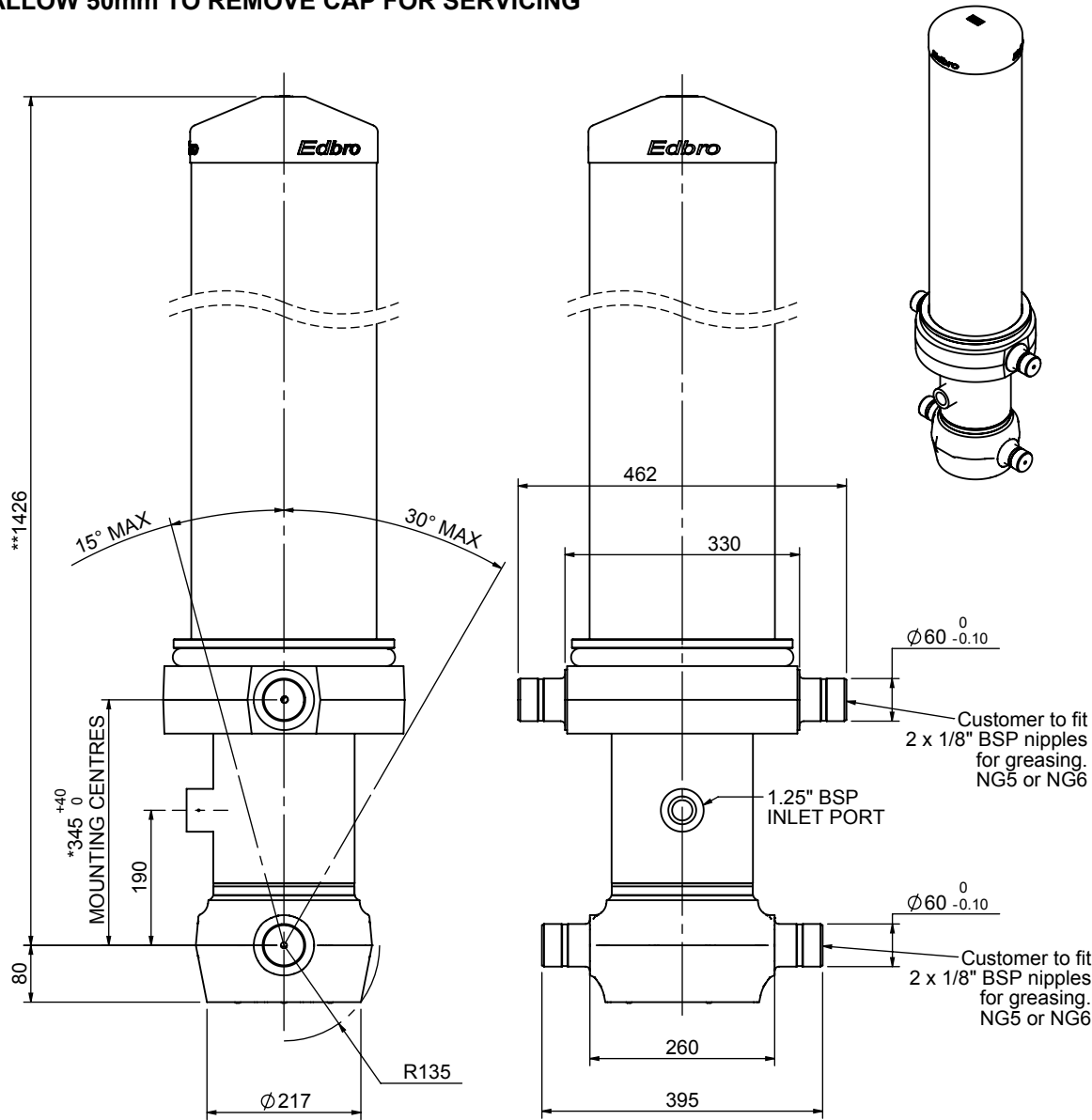


Cylinder 5 stage front end with outer cover

****ALLOW 50mm TO REMOVE CAP FOR SERVICING**

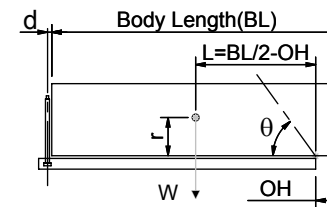


*Includes 12mm Pull Out.

CS170054833B19W11

SPECIFICATION		TIPPING CAPACITY : 30-59 TONNES***		
Stage	Diameter	Length	Stroke	Swept Volume
OUTER COVER	261	1045	-	-
0	199	1375	-	-
1	176	1340	1114	27
2	155	1340	1137	21
3	136	1340	1147	17
4	117	1340	1162	12
5	98	1340	267	2
Total (+5/-10)			4827	79
Final stroke reduced by	900	Priming Volume		18
Cylinder Mass (Kg)	279	Total Volume (Litres)		97
Maximum Pressure (Bar)	190	Max. first stage thrust		265 KN

***TIPPING CAPACITY AT WORKING PRESSURE



BODY LENGTH (BL)						OH
6000		6250		6500		
35	47°	32	45°	30	43°	150
44	50°	39	47°	36	45°	450
59	53°	50	50°	44	48°	750

$d = 229$; $r = 900$; Working Pressure 110 bar

Tipping angle (θ)

Body + payload mass, W (tonne)

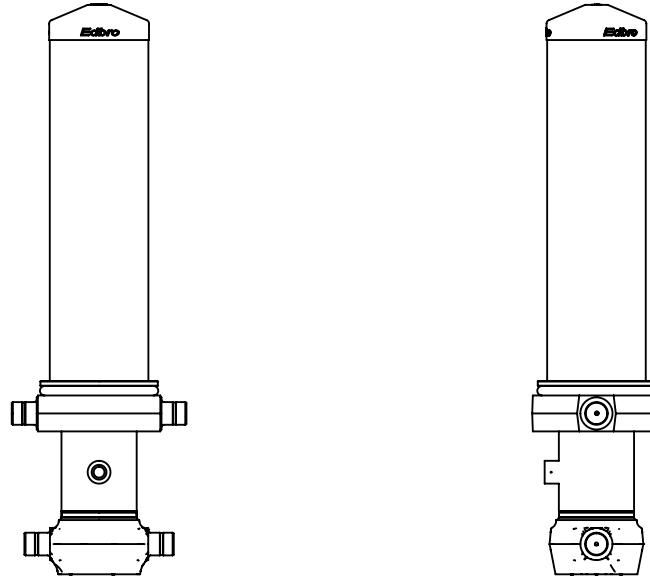
For guidance only;

Higher working pressures and tipping capacities may be possible.

To check your application email - applications@edbro.co.uk

NOTES

1. This cylinder is for lifting purposes only and side load conditions should be avoided
2. Cylinder is painted in primer paint to RAL5013
3. Refer to www.edbro.com for:-
 - Bracket details
 - Installation instructions that must be observed
 - Correct oil selection
 - An explanation of tipping capacity



CS170054833B19W11