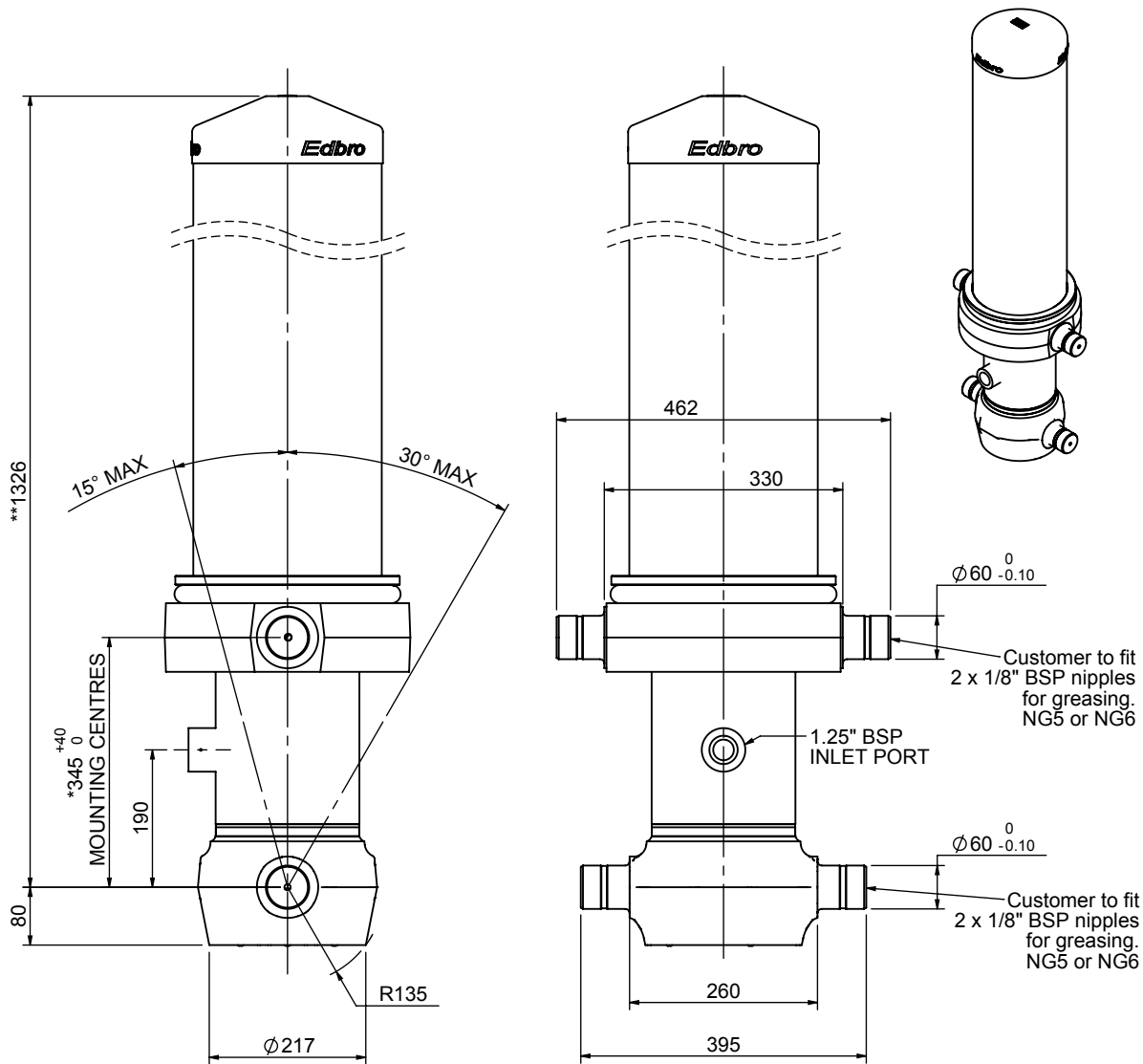


Cylinder 5 stage front end with outer cover

****ALLOW 50mm TO REMOVE CAP FOR SERVICING**

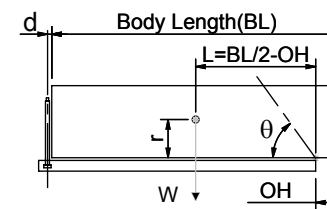


***Includes 12mm Pull Out. All Stages Chrome Plated**

CS170055233B19A11C

SPECIFICATION		TIPPING CAPACITY : 39-61 TONNES***		
Stage	Diameter	Length	Stroke	Swept Volume
OUTER COVER	261	945	-	-
0	199	1275	-	-
1	176	1240	1014	25
2	155	1240	1037	20
3	136	1240	1047	15
4	117	1240	1062	11
5	98	1240	1067	8
Total (+5/-10)			5227	79
Final stroke reduced by	0	Priming Volume		16
Cylinder Mass (Kg)	263	Total Volume (Litres)		95
Maximum Pressure (Bar)	190	Max. first stage thrust	265 KN	

***TIPPING CAPACITY AT WORKING PRESSURE



BODY LENGTH (BL)						OH
6500		7000		7500		
44	47°	41	44°	39	41°	150
51	50°	46	46°	42	42°	450
61	52°	52	48°	47	44°	750

d = 229; r = 900; Working Pressure 175 bar

Tipping angle (θ)

Body + payload mass, W (tonne)

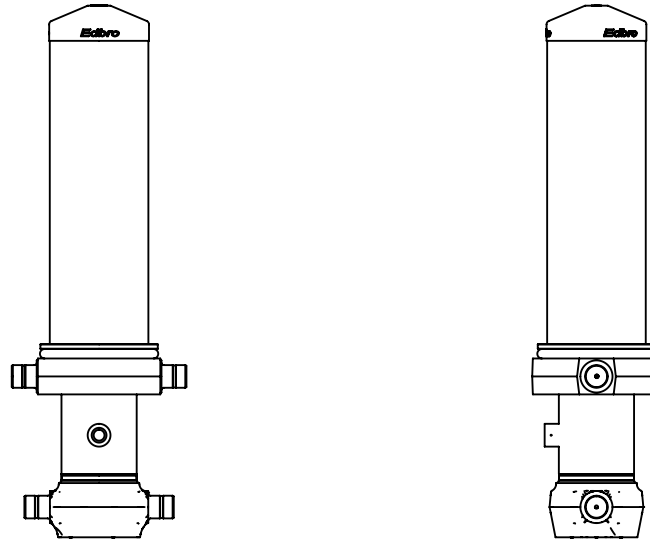
For guidance only;

Higher working pressures and tipping capacities may be possible.

To check your application email - applications@edbro.co.uk

NOTES

1. This cylinder is for lifting purposes only and side load conditions should be avoided
2. Cylinder is painted in primer paint to RAL5013
3. Refer to www.edbro.com for:-
 - Bracket details
 - Installation instructions that must be observed
 - Correct oil selection
 - An explanation of tipping capacity



CS170055233B19A11C