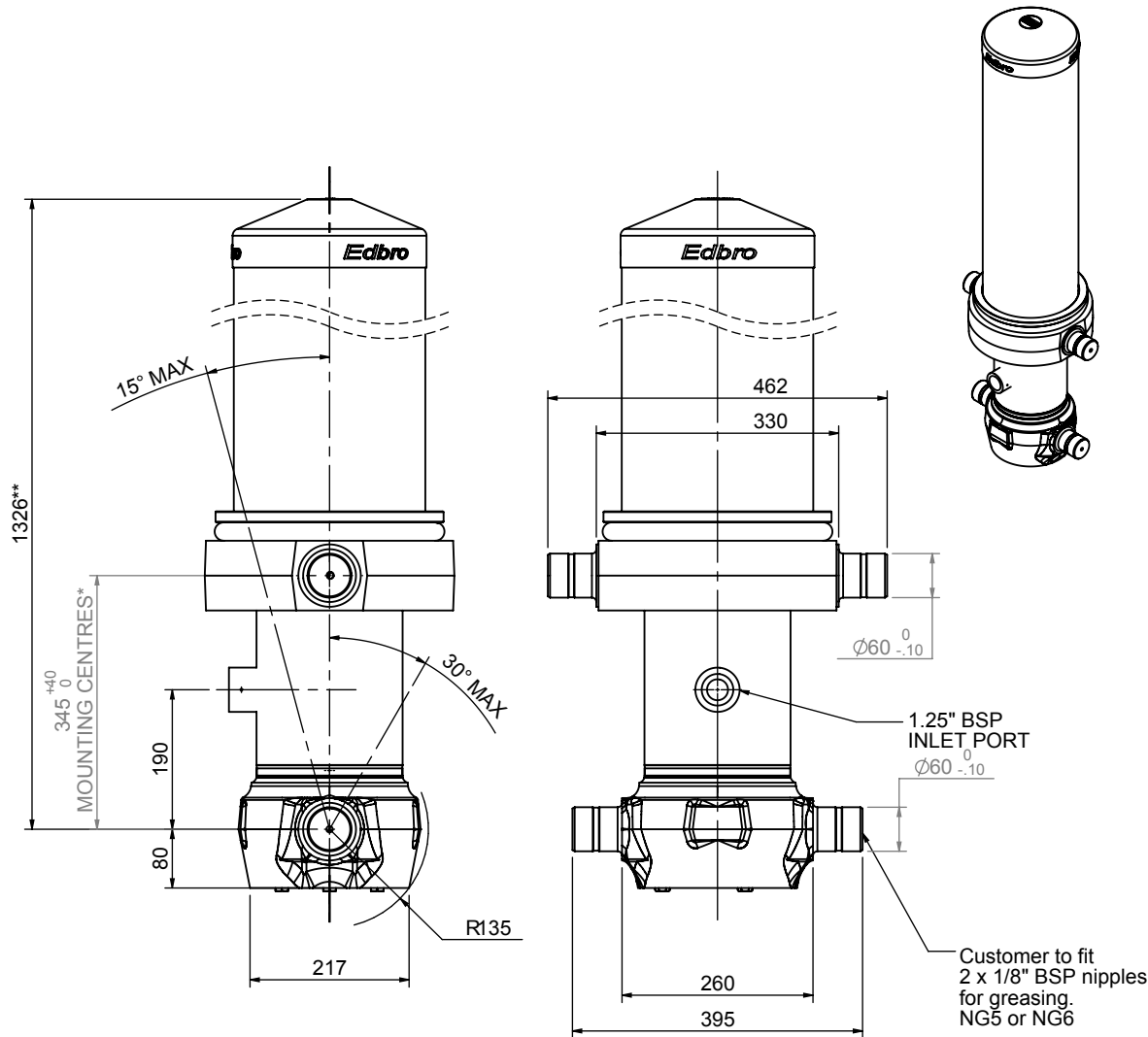


# Cylinder 5 stage front end with Outer Cover

CS170055233B19A11

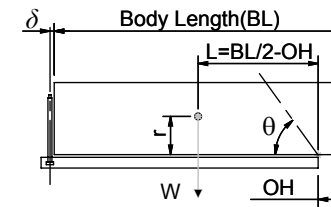
**\*\*ALLOW 50mm TO REMOVE CAP FOR SERVICING**



SPECIFICATION		RATED CAPACITY : 38-60 TONNES***		
Stage	Diameter	Length	Stroke	Swept Volume
OUTER COVER	261	945	-	-
0	199	1275	-	-
1	176	1240	1014	25
2	155	1240	1037	20
3	136	1240	1047	15
4	117	1240	1062	11
5	98	1240	1067	8
Final stroke reduced by	0	Total (+5/-10)	5227	79
Cylinder Mass (Kg)	265.78	Priming Volume	12	
Rated Pressure (Bar)	175	Total Volume (Litres)	91	
Maximum Pressure (Bar)	175	Max. first stage thrust	260 KN	

### \*\*\*TIPPING CAPACITY AT RATED PRESSURE

d = 229 ; r = 900



		BODY LENGTH (BL)			OH	
		6500	7000	7500		
44	47°	41	44°	38	41°	150
51	50°	46	46°	42	42°	450
60	52°	52	48°	47	44°	750

— Tipping angle (θ)  
— Body + payload mass, W (tonne)

### For guidance only;

Higher Rated Pressures may be possible. To check your application, email Edbro plc at <applications@edbro.co.uk>

### NOTES

- If hydraulic pressure is used to limit overloading, the system relief valve must be set to the Rated Pressure unless agreed otherwise by Edbro
- The system relief valve can be set to Maximum Pressure if the load is limited by other means. See RATINGS page for advice
- This cylinder is for lifting purposes only and sideload conditions must be avoided
- Cylinder is painted in primer paint to RAL5013
- See bracket options page BRKT01, BRKT02
- See installation instructions INSTALL01
- Use oil according to specification OIL01

\*Includes 12mm Pull Out



**Edbro plc**  
Nelson Street, Bolton, Lancashire BL3 2JJ UK  
Tel +44 (0) 1204 528888 Fax +44 (0) 1204 531957  
Email: postmaster@edbro.com Web: www.edbro.com

Technical Specifications are subject to change without notice  
Date Created/Updated: 01 September 2009 10:34:07  
Refer www.edbro.com to confirm latest specification  
All dimensions are in 'mm', unless otherwise stated