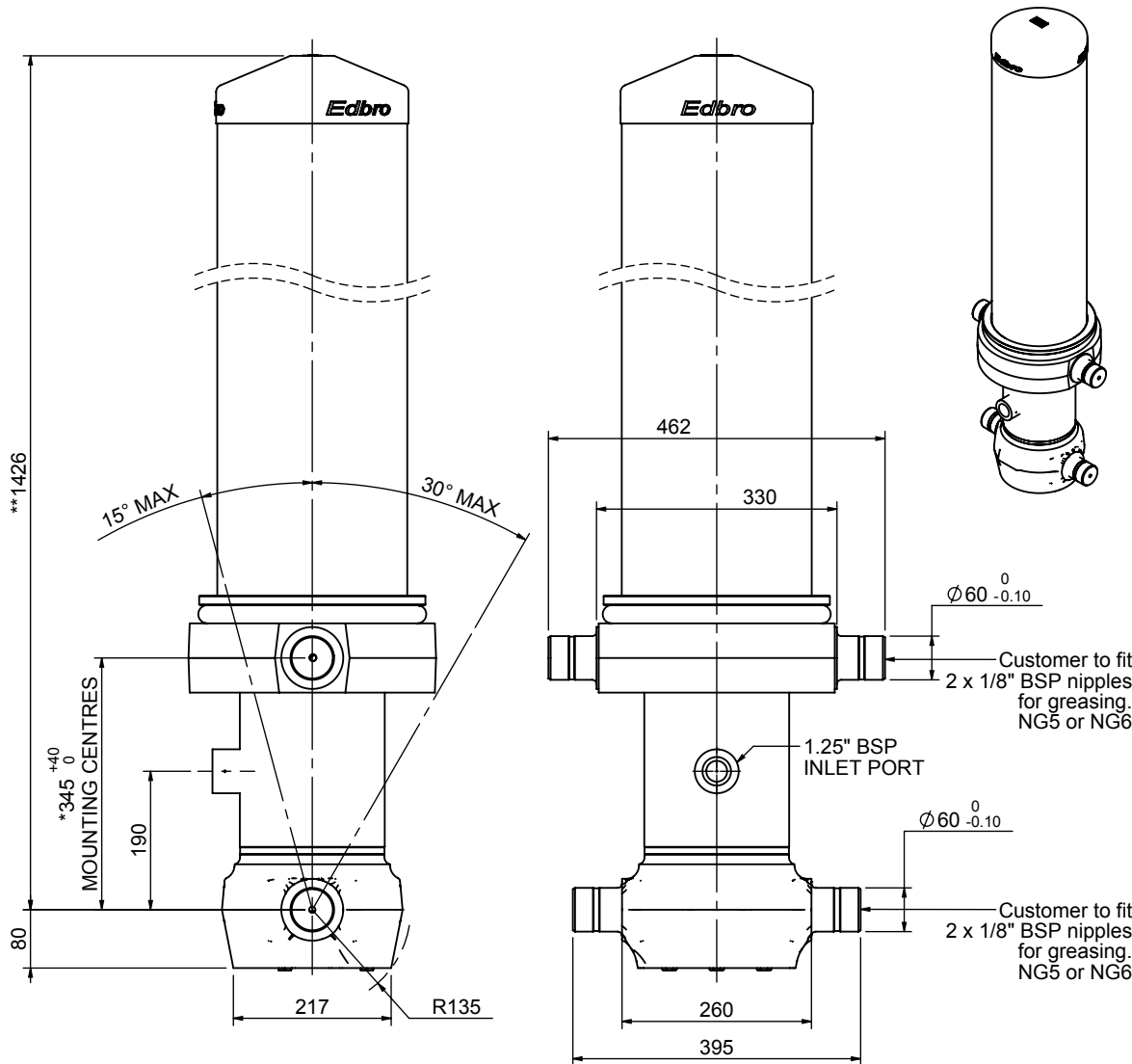


Cylinder 5 stage front end with outer cover

****ALLOW 50mm TO REMOVE CAP FOR SERVICING**

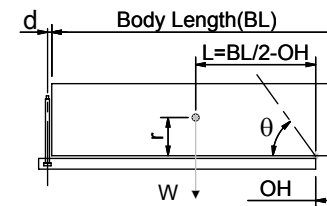


*Includes 12mm Pull Out.

CS170055233B19L11

SPECIFICATION		TIPPING CAPACITY : 39-58 TONNES***		
Stage	Diameter	Length	Stroke	Swept Volume
OUTER COVER	261	1045	-	-
0	199	1375	-	-
1	176	1340	1114	27
2	155	1340	1137	21
3	136	1340	1147	17
4	117	1340	1162	12
5	98	1340	667	5
Total (+5/-10)			5227	82
Final stroke reduced by	500	Priming Volume		17.8
Cylinder Mass (Kg)	275	Total Volume (Litres)		99.8
Maximum Pressure (Bar)	190	Max. first stage thrust		265 KN

***TIPPING CAPACITY AT WORKING PRESSURE



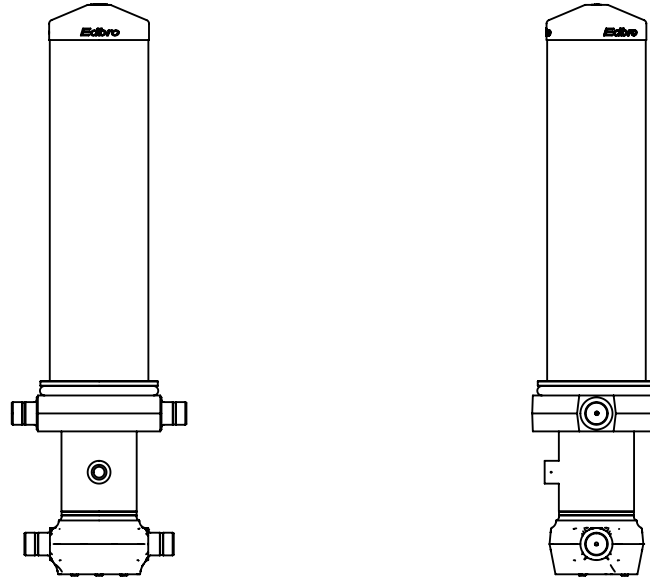
	BODY LENGTH (BL)						OH
	7000	7500	8000	8500	9000	9500	
44	44°	41	41°	39	38°	150	
50	46°	45	42°	42	39°	450	
58	48°	51	44°	46	41°	750	

$d = 229$; $r = 900$; Working Pressure 175 bar
 Tipping angle (θ)
 Body + payload mass, W (tonne)

For guidance only;
 Higher working pressures and tipping capacities may be possible.
 To check your application email - applications@edbro.co.uk

NOTES

1. This cylinder is for lifting purposes only and side load conditions should be avoided
2. Cylinder is painted in primer paint to RAL5013
3. Refer to www.edbro.com for:-
 - Bracket details
 - Installation instructions that must be observed
 - Correct oil selection
 - An explanation of tipping capacity



CS170055233B19L11