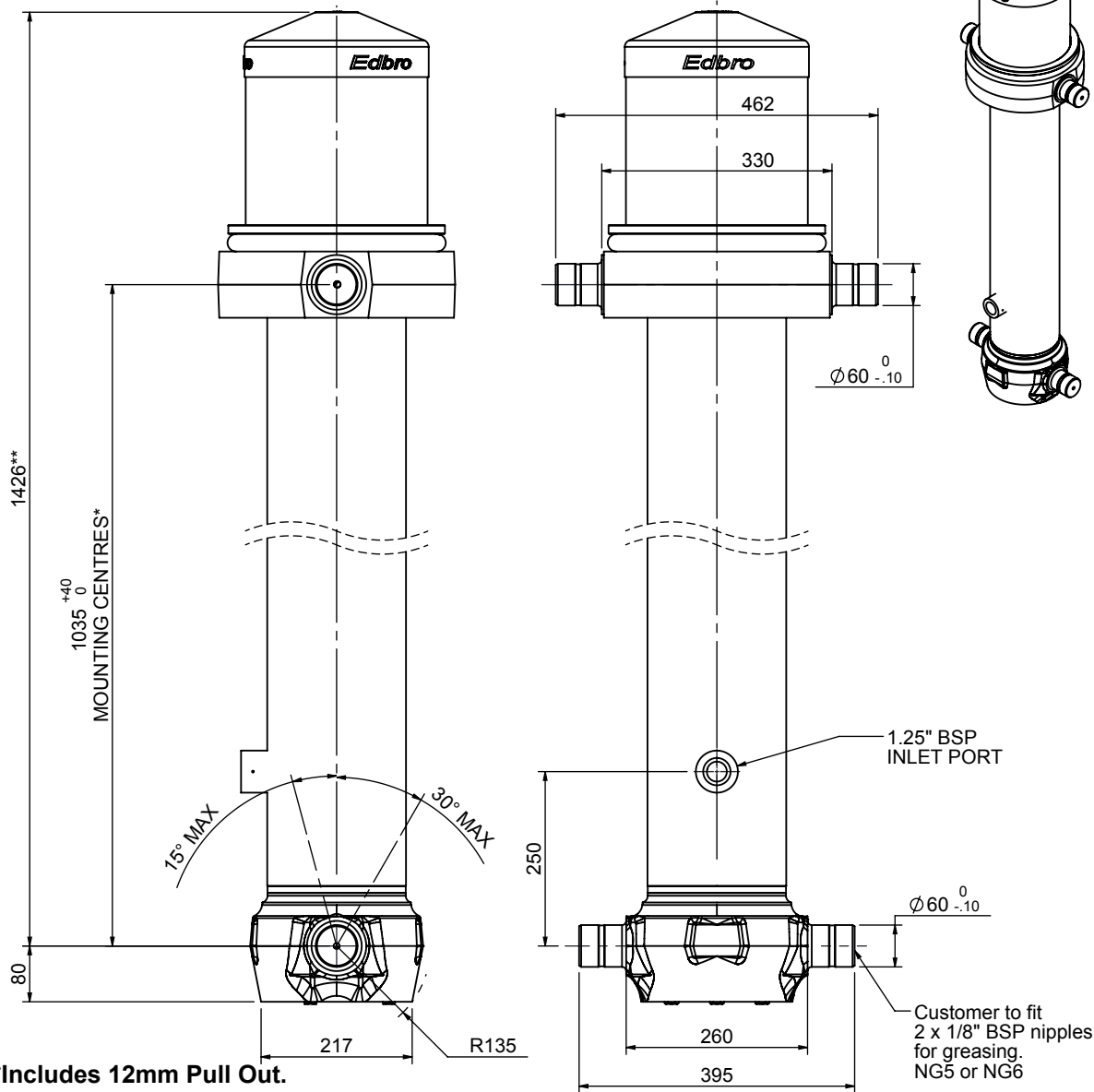


# Cylinder 5 stage front end with outer cover

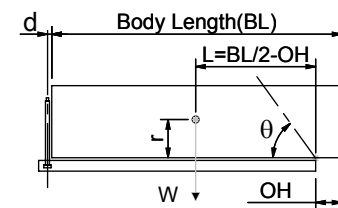
**\*\*ALLOW 50mm TO REMOVE CAP FOR SERVICING**



# CS170055383B25H15

SPECIFICATION		TIPPING CAPACITY : 39-62 TONNES***		
Stage	Diameter	Length	Stroke	Swept Volume
OUTER COVER	261	355	-	-
0	199	1375	-	-
1	176	1340	1114	27
2	155	1340	1137	21
3	136	1340	1147	17
4	117	1340	1162	12
5	98	1340	817	6
Total (+5/-10)			5377	83
Final stroke reduced by	350	Priming Volume	18	
Cylinder Mass (Kg)	255	Total Volume (Litres)	101	
Maximum Pressure (Bar)	175	Max. first stage thrust	265 KN	

### \*\*\*TIPPING CAPACITY AT WORKING PRESSURE



BODY LENGTH (BL)						OH
6750	7250	7750				
46	47°	42	44°	39	41°	150
52	49°	47	46°	43	42°	450
62	52°	53	48°	48	44°	750

d = 229; r = 900; Working Pressure 175 bar  
 Tipping angle (θ)  
 Body + payload mass, W (tonne)  
**For guidance only;**  
 Higher working pressures and tipping capacities may be possible.  
 To check your application email - [applications@edbro.co.uk](mailto:applications@edbro.co.uk)

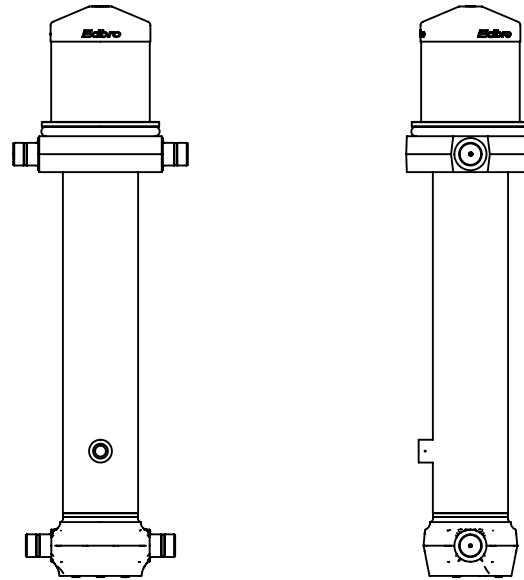
### NOTES

1. This cylinder is for lifting purposes only and side load conditions should be avoided
2. Cylinder is painted in primer paint to RAL5013
3. Refer to [www.edbro.com](http://www.edbro.com) for:-
  - Bracket details
  - Installation instructions that must be observed
  - Correct oil selection
  - An explanation of tipping capacity



**Edbro plc**  
 Nelson Street, Bolton, England, BL3 2JJ  
 Tel +44 (0) 1204 528888 Fax +44 (0) 1204 531957  
 Email: [postmaster@edbro.com](mailto:postmaster@edbro.com) Web: [www.edbro.com](http://www.edbro.com)

Technical Specifications are subject to change without notice  
 Date Created/Updated: 24 June 2014  
 Refer [www.edbro.com](http://www.edbro.com) to confirm latest specification  
 All dimensions are in 'mm', unless otherwise stated



CS170055383B25H15