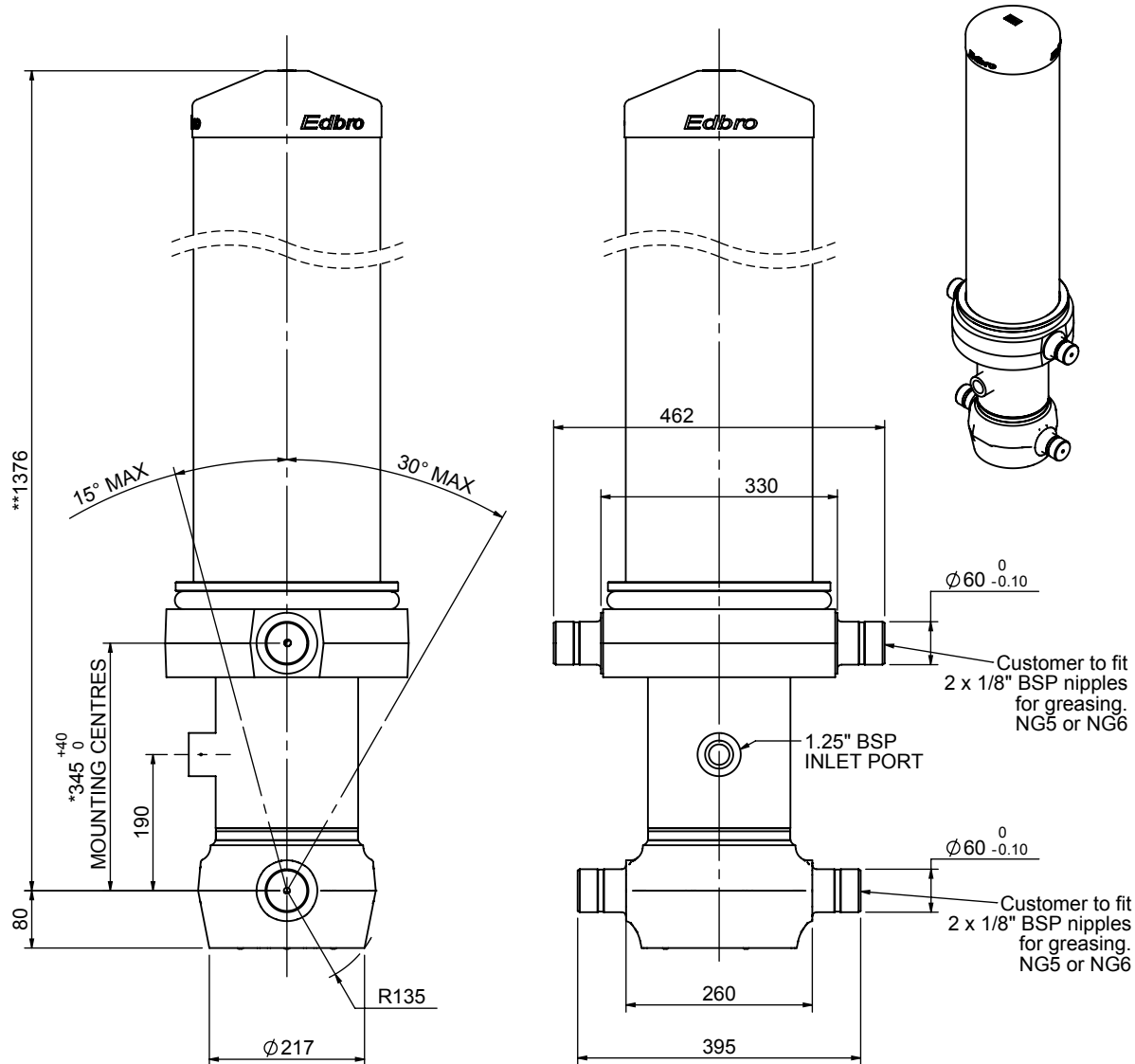


Cylinder 5 stage front end with outer cover

****ALLOW 50mm TO REMOVE CAP FOR SERVICING**

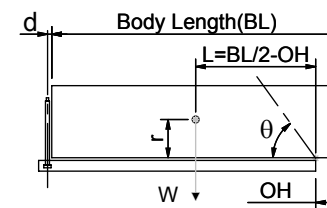


*Includes 12mm Pull Out.

CS170055483B19A11

SPECIFICATION		TIPPING CAPACITY : 39-59 TONNES***		
Stage	Diameter	Length	Stroke	Swept Volume
OUTER COVER	261	995	-	-
0	199	1325	-	-
1	176	1290	1064	26
2	155	1290	1087	21
3	136	1290	1097	16
4	117	1290	1112	12
5	98	1290	1117	8
Total (+5/-10)			5477	83
Final stroke reduced by	0	Priming Volume		17
Cylinder Mass (Kg)	271	Total Volume (Litres)		100
Maximum Pressure (Bar)	190	Max. first stage thrust		265 KN

***TIPPING CAPACITY AT WORKING PRESSURE



BODY LENGTH (BL)						OH
6750		7250		7750		
44	48°	41	44°	39	41°	150
50	50°	45	46°	42	43°	450
59	53°	51	48°	47	45°	750

d = 229; r = 900; Working Pressure 175 bar

Tipping angle (θ)
Body + payload mass, W (tonne)

For guidance only;

Higher working pressures and tipping capacities may be possible.
To check your application email - applications@edbro.co.uk

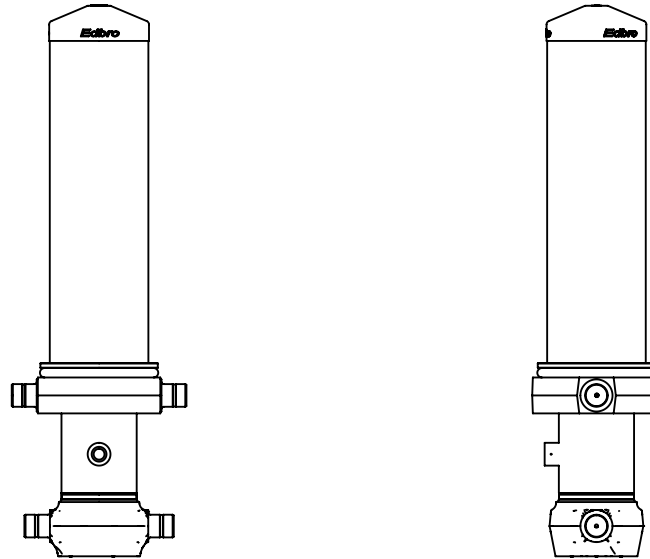
NOTES

1. This cylinder is for lifting purposes only and side load conditions should be avoided
2. Cylinder is painted in primer paint to RAL5013
3. Refer to www.edbro.com for:-
 - Bracket details
 - Installation instructions that must be observed
 - Correct oil selection
 - An explanation of tipping capacity



Edbro plc
 Nelson Street, Bolton, England, BL3 2JJ
 Tel +44 (0) 1204 528888 Fax +44 (0) 1204 531957
 Email: postmaster@edbro.com Web: www.edbro.com

Technical Specifications are subject to change without notice
 Date Created/Updated: 27 July 2012
 Refer www.edbro.com to confirm latest specification
 All dimensions are in 'mm', unless otherwise stated



CS170055483B19A11