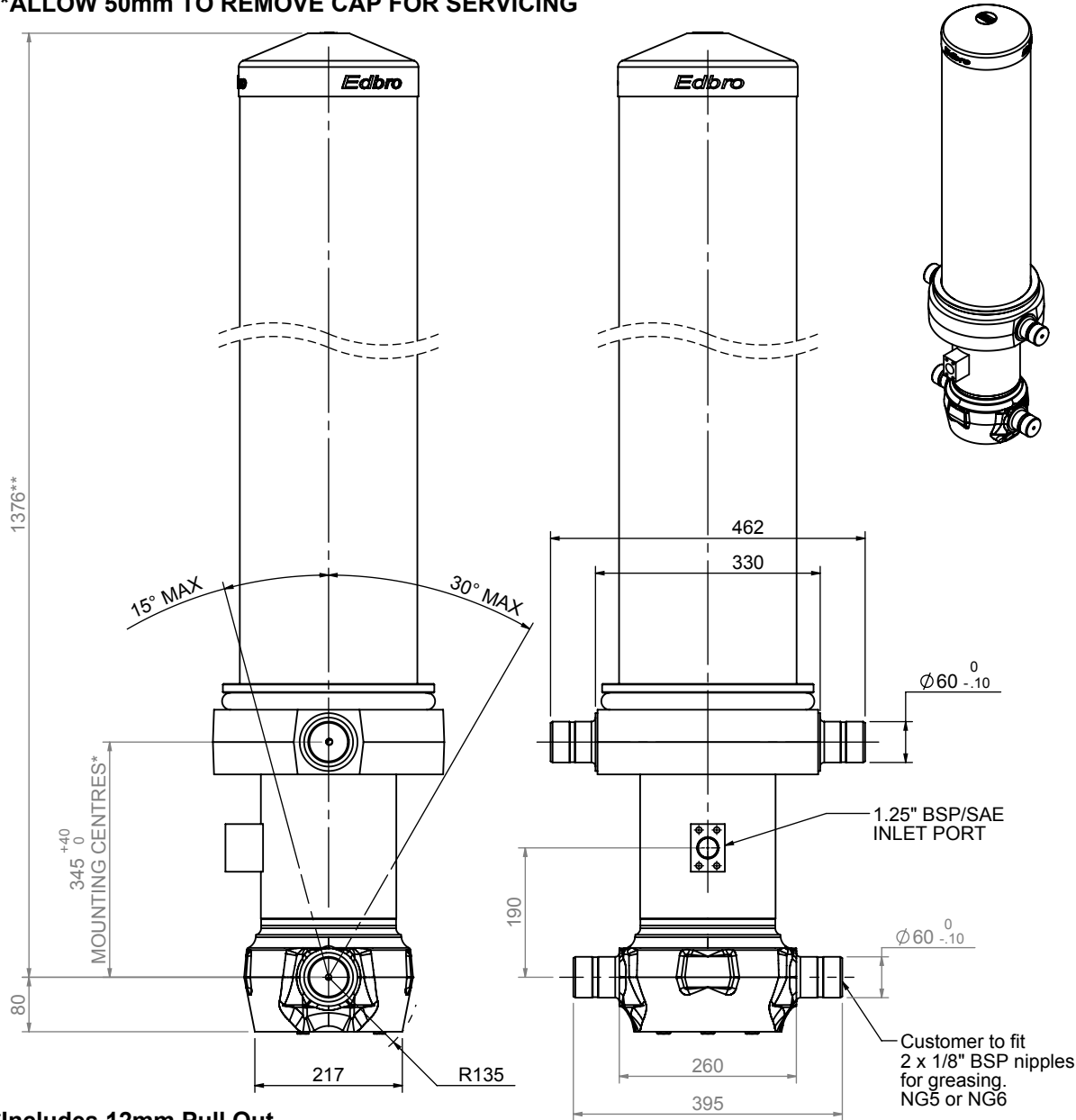


# Cylinder 5 stage front end with outer cover

**\*\*ALLOW 50mm TO REMOVE CAP FOR SERVICING**

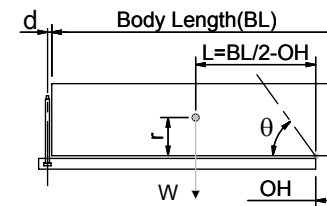


\*Includes 12mm Pull Out.

## CS170055483S19A11

SPECIFICATION		TIPPING CAPACITY : 39-59 TONNES***		
Stage	Diameter	Length	Stroke	Swept Volume
OUTER COVER	261	995	-	-
0	199	1325	-	-
1	176	1290	1064	26
2	155	1290	1087	21
3	136	1290	1097	16
4	117	1290	1112	12
5	98	1290	1117	8
Total (+5/-10)			5477	83
Final stroke reduced by	0	Priming Volume		17
Cylinder Mass (Kg)	268	Total Volume (Litres)		100
Maximum Pressure (Bar)	190	Max. first stage thrust		265 KN

### \*\*\*TIPPING CAPACITY AT WORKING PRESSURE



BODY LENGTH (BL)						OH
6750	7250	7750				
44	48°	41	44°	39	41°	150
50	50°	45	46°	42	43°	450
59	53°	51	48°	47	45°	750

$d = 229$ ;  $r = 900$ ; Working Pressure 175 bar

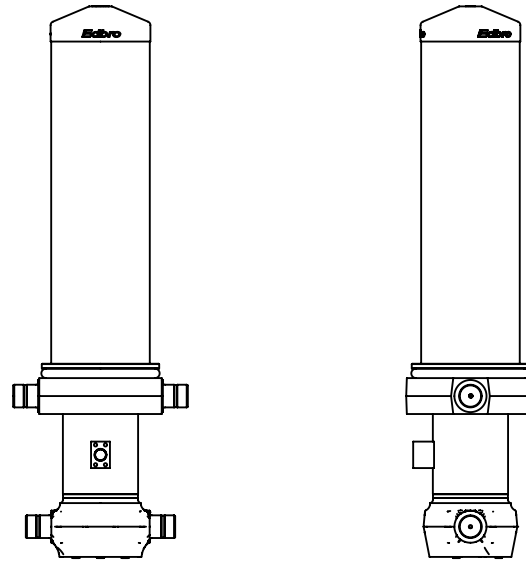
Tipping angle ( $\theta$ )  
Body + payload mass, W (tonne)

### For guidance only;

Higher working pressures and tipping capacities may be possible.  
To check your application email - [applications@edbro.co.uk](mailto:applications@edbro.co.uk)

### NOTES

1. This cylinder is for lifting purposes only and side load conditions should be avoided
2. Cylinder is painted in primer paint to RAL5013
3. Refer to [www.edbro.com](http://www.edbro.com) for:-
  - Bracket details
  - Installation instructions that must be observed
  - Correct oil selection
  - An explanation of tipping capacity



CS170055483S19A11