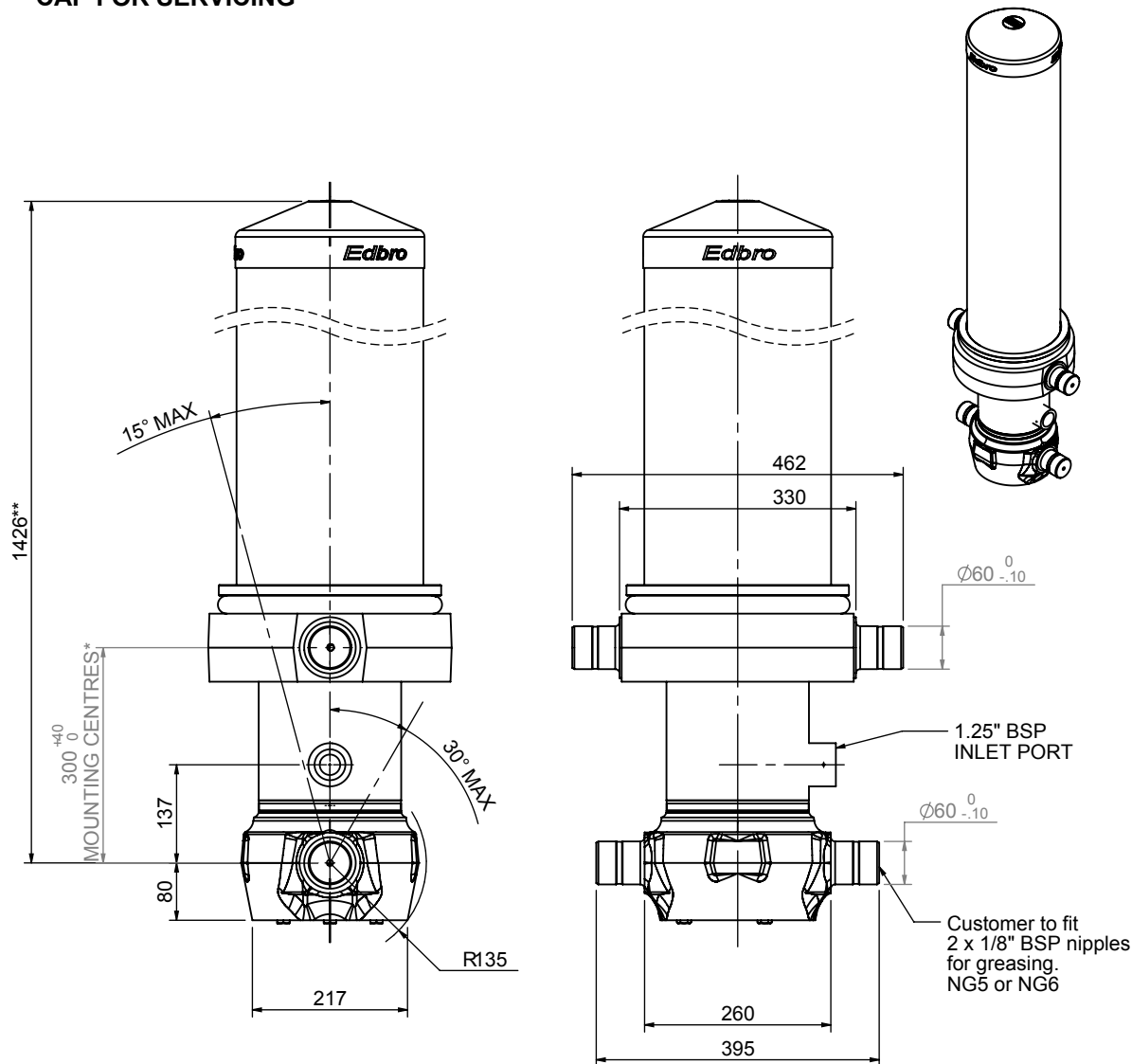


Cylinder 5 stage front end with Outer Cover

****ALLOW 50mm TO REMOVE CAP FOR SERVICING**



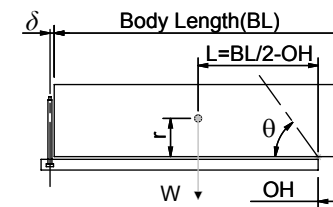
***Includes 12mm Pull Out**

CS170055733N14A10

| SPECIFICATION | | RATED CAPACITY : 38-58 TONNES*** | | |
|-------------------------|----------|----------------------------------|--------|--------------|
| Stage | Diameter | Length | Stroke | Swept Volume |
| OUTER COVER | 261 | 1090 | - | - |
| 0 | 199 | 1375 | - | - |
| 1 | 176 | 1340 | 1114 | 27 |
| 2 | 155 | 1340 | 1137 | 21 |
| 3 | 136 | 1340 | 1147 | 17 |
| 4 | 117 | 1340 | 1162 | 12 |
| 5 | 98 | 1340 | 1167 | 9 |
| Final stroke reduced by | 0 | Total (+5/-10) | 5727 | 86.0 |
| Cylinder Mass (Kg) | 282.61 | Priming Volume | 18 | |
| Rated Pressure (Bar) | 175 | Total Volume (Litres) | 104 | |
| Maximum Pressure (Bar) | 175 | Max. first stage thrust | 260 KN | |

***TIPPING CAPACITY AT RATED PRESSURE

$d = 229 ; r = 900$



| BODY LENGTH (BL) | | | | | | OH |
|------------------|-----|------|-----|------|-----|-----|
| 7000 | | 7500 | | 8000 | | |
| 44 | 48° | 41 | 45° | 38 | 42° | 150 |
| 49 | 50° | 45 | 47° | 42 | 43° | 450 |
| 58 | 53° | 51 | 49° | 46 | 45° | 750 |

— Tipping angle (θ)
— Body + payload mass, W (tonne)

For guidance only;

Higher Rated Pressures may be possible. To check your application, email Edbro plc at <applications@edbro.co.uk>

NOTES

- If hydraulic pressure is used to limit overloading, the system relief valve must be set to the Rated Pressure unless agreed otherwise by Edbro
- The system relief valve can be set to Maximum Pressure if the load is limited by other means. See RATINGS page for advice
- This cylinder is for lifting purposes only and sload conditions must be avoided
- Cylinder is painted in primer paint to RAL5013
- See bracket options page BRKT01, BRKT02
- See installation instructions INSTALL01
- Use oil according to specification OIL01