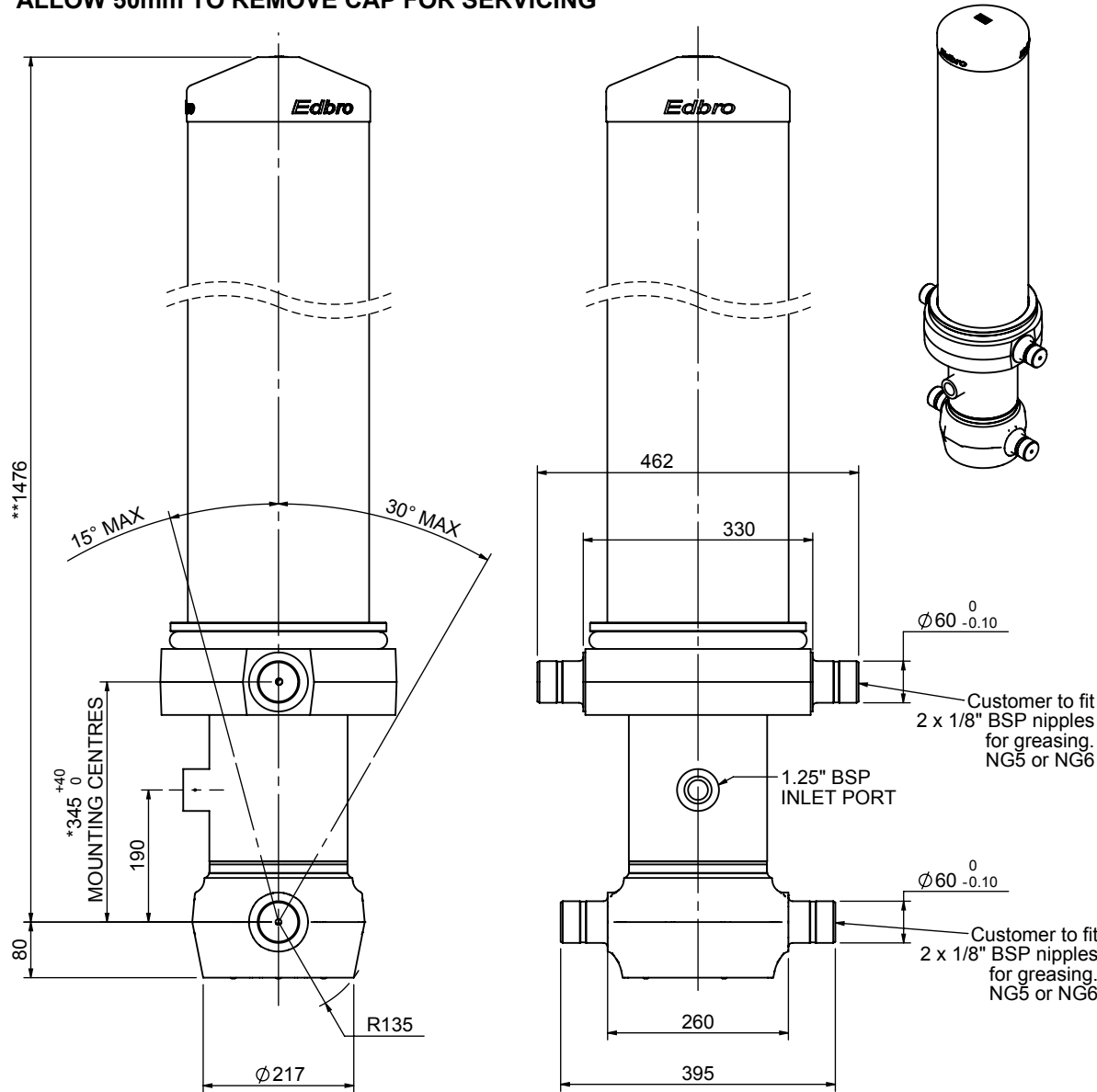


# Cylinder 5 stage front end with outer cover

**\*\*ALLOW 50mm TO REMOVE CAP FOR SERVICING**

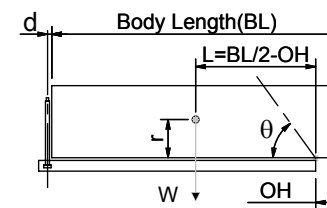


\*Includes 12mm Pull Out.

# CS170055983B19A11

SPECIFICATION		TIPPING CAPACITY : 39-57 TONNES***		
Stage	Diameter	Length	Stroke	Swept Volume
OUTER COVER	261	1095	-	-
0	199	1425	-	-
1	176	1390	1164	28
2	155	1390	1187	22
3	136	1390	1197	17
4	117	1390	1212	13
5	98	1390	1217	9
Total (+5/-10)			5977	89
Final stroke reduced by	0	Priming Volume		18
Cylinder Mass (Kg)	286	Total Volume (Litres)		107
Maximum Pressure (Bar)	190	Max. first stage thrust		265 KN

### \*\*\*TIPPING CAPACITY AT WORKING PRESSURE



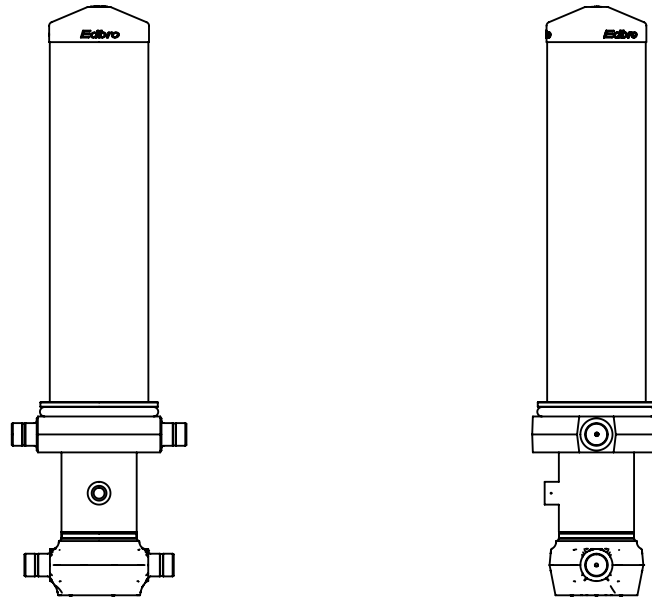
BODY LENGTH (BL)						OH
7250	7750	8250				
44	48°	41	45°	39	42°	150
49	51°	45	47°	42	44°	450
57	53°	50	49°	46	46°	750

$d = 229$ ;  $r = 900$ ; Working Pressure 175 bar  
 Tipping angle ( $\theta$ )  
 Body + payload mass, W (tonne)

**For guidance only;**  
 Higher working pressures and tipping capacities may be possible.  
 To check your application email - [applications@edbro.co.uk](mailto:applications@edbro.co.uk)

### NOTES

1. This cylinder is for lifting purposes only and side load conditions should be avoided
2. Cylinder is painted in primer paint to RAL5013
3. Refer to [www.edbro.com](http://www.edbro.com) for:-
  - Bracket details
  - Installation instructions that must be observed
  - Correct oil selection
  - An explanation of tipping capacity



CS170055983B19A11