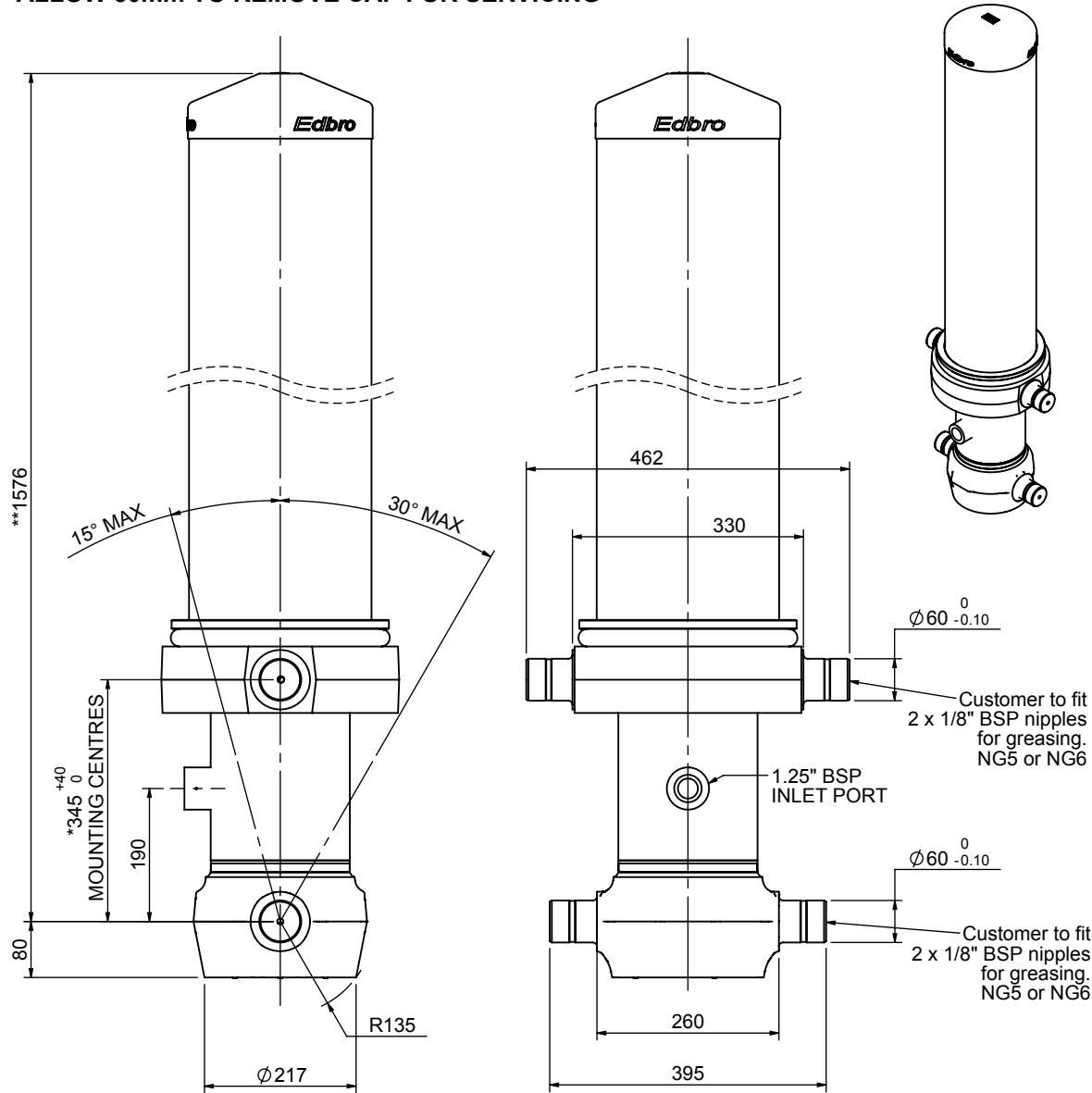


# Cylinder 5 stage front end with outer cover

**\*\*ALLOW 50mm TO REMOVE CAP FOR SERVICING**

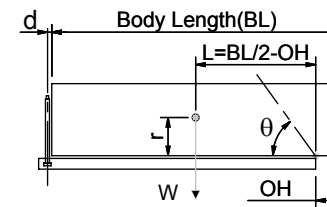


\*Includes 12mm Pull Out.

## CS170056483B19A11

SPECIFICATION		TIPPING CAPACITY : 38-55 TONNES***		
Stage	Diameter	Length	Stroke	Swept Volume
OUTER COVER	261	1195	-	-
0	199	1525	-	-
1	176	1490	1264	31
2	155	1490	1287	24
3	136	1490	1297	19
4	117	1490	1312	14
5	98	1490	1317	10
Total (+5/-10)			6477	98
Final stroke reduced by	0	Priming Volume		20
Cylinder Mass (Kg)	302	Total Volume (Litres)		118
Maximum Pressure (Bar)	190	Max. first stage thrust		265 KN

### \*\*\*TIPPING CAPACITY AT WORKING PRESSURE



BODY LENGTH (BL)						OH
7750		8250		8750		
43	49°	40	46°	38	43°	150
48	51°	44	48°	41	45°	450
55	54°	49	50°	45	47°	750

$d = 229$ ;  $r = 900$ ; Working Pressure 175 bar

Tipping angle ( $\theta$ )

Body + payload mass, W (tonne)

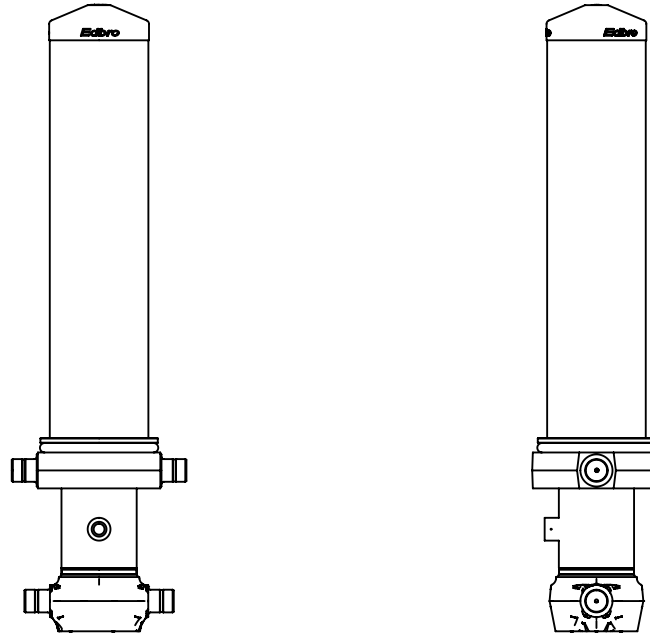
### For guidance only;

Higher working pressures and tipping capacities may be possible.

To check your application email - [applications@edbro.co.uk](mailto:applications@edbro.co.uk)

### NOTES

1. This cylinder is for lifting purposes only and side load conditions should be avoided
2. Cylinder is painted in primer paint to RAL5013
3. Refer to [www.edbro.com](http://www.edbro.com) for;-
  - Bracket details
  - Installation instructions that must be observed
  - Correct oil selection
  - An explanation of tipping capacity



CS170056483B19A11