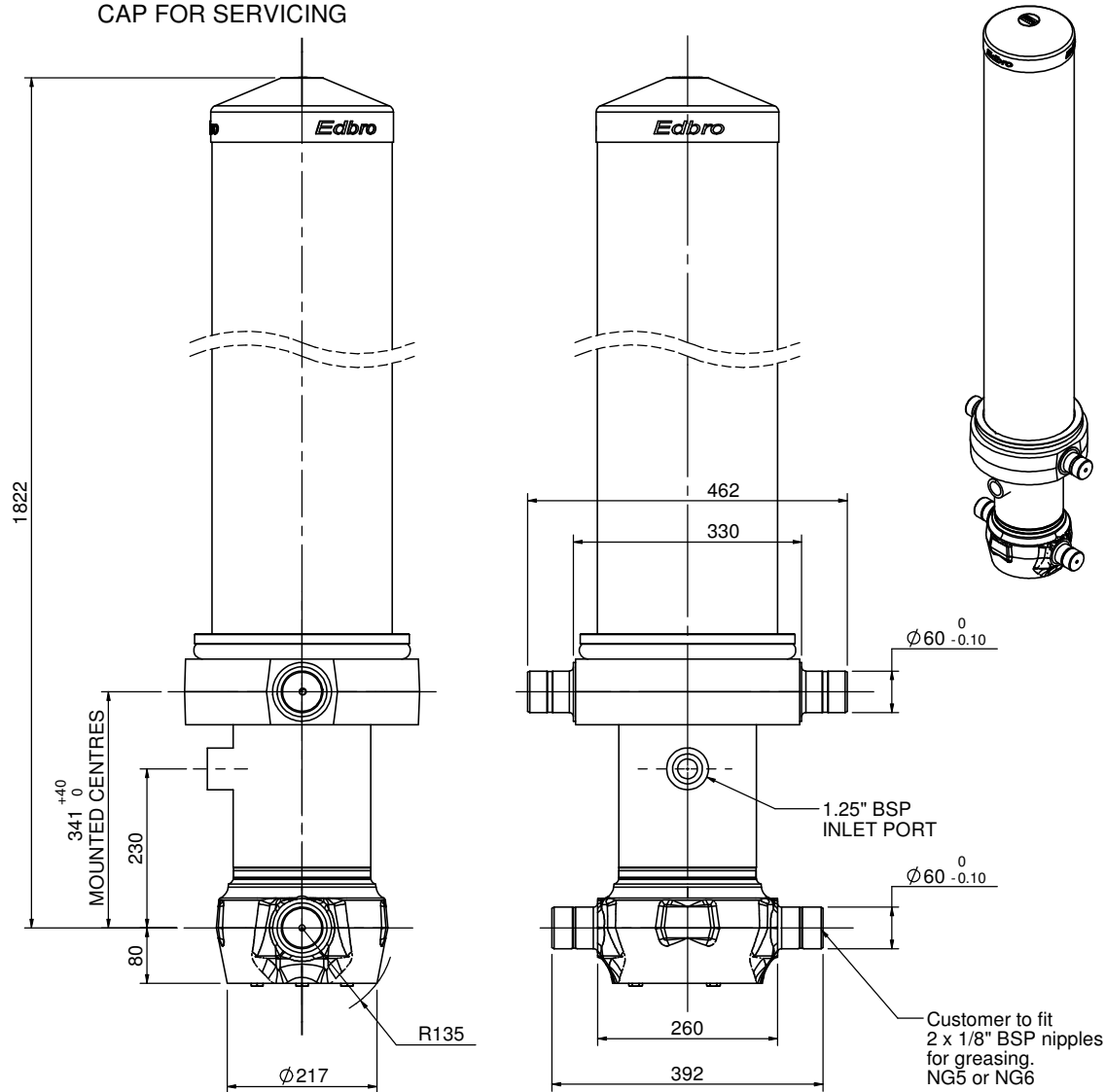


Cylinder 5 stage front end with Outer Cover

NOTE: ALLOW 50mm TO REMOVE CAP FOR SERVICING

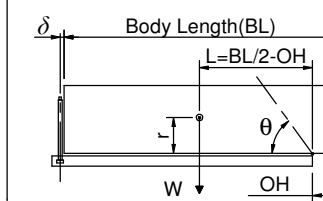


CS170057733B23A11

| SPECIFICATION | | RATED CAPACITY : 35-44 TONNES* | | |
|-------------------------|----------|--------------------------------|--------|--------------|
| Stage | Diameter | Length | Stroke | Swept Volume |
| OUTER COVER | 260.35 | 1445 | | |
| 0 | 198.12 | 1775 | | |
| 1 | 176.00 | 1740 | 1520 | 37.0 |
| 2 | 154.85 | 1740 | 1537 | 28.9 |
| 3 | 135.75 | 1740 | 1547 | 22.4 |
| 4 | 116.65 | 1740 | 1562 | 16.7 |
| 5 | 97.8 | 1740 | 1567 | 11.8 |
| Final stroke reduced by | 0 | Total | 7733 | 116.8 |
| Cylinder Mass (Kg) | 344 | Priming Volume | | 12.0 |
| Working Pressure (Bar) | 165 | Total Volume (Litres) | | 128.8 |
| Maximum Pressure (Bar) | 175 | Max. first stage thrust | | 260 KN |

*TIPPING CAPACITY AT WORKING PRESSURE

$\delta = 229$; $r = 900$



| BODY LENGTH (BL) | | | | | | OH |
|------------------|-----|-------|-----|-------|-----|-----|
| 9500 | | 10000 | | 10500 | | |
| 38 | 48° | 36 | 45° | 35 | 43° | 150 |
| 40 | 49° | 38 | 47° | 37 | 44° | 450 |
| 44 | 51° | 41 | 48° | 39 | 46° | 750 |

For guidance only;

Higher working pressures may be possible. To check your application, email Edbro plc at <applications@edbro.co.uk>

NOTES

- If hydraulic pressure is used to limit overloading, the system relief valve must be set to the Working Pressure unless agreed by Edbro.
- The system relief valve can be set to Maximum Pressure if the load is limited by other means.
- This cylinder is for lifting purposes only and sload conditions must be avoided.
- Cylinder is painted in primer paint to RAL5010.
- See bracket options page 17BRKT01.
- See installation instructions INSTALL01.
- Use oil according to specification OIL01.

This drawing is available on request in PDF (2D), DXF (2D) or Parasolid (3D) via applications@edbro.co.uk

Edbro
SETTING THE INDUSTRY STANDARD

Edbro plc
Nelson Street, Bolton, Lancashire BL3 2JJ UK
Tel +44 (0) 1204 528888 Fax +44 (0) 1204 531957
Email: postmaster@edbro.com Web: www.edbro.com

Technical Specifications are subject to change without notice
Date Created/Updated: 09 April 2009 10:52:03
Refer www.edbro.com to confirm latest specification
All dimensions are in 'mm', unless otherwise stated