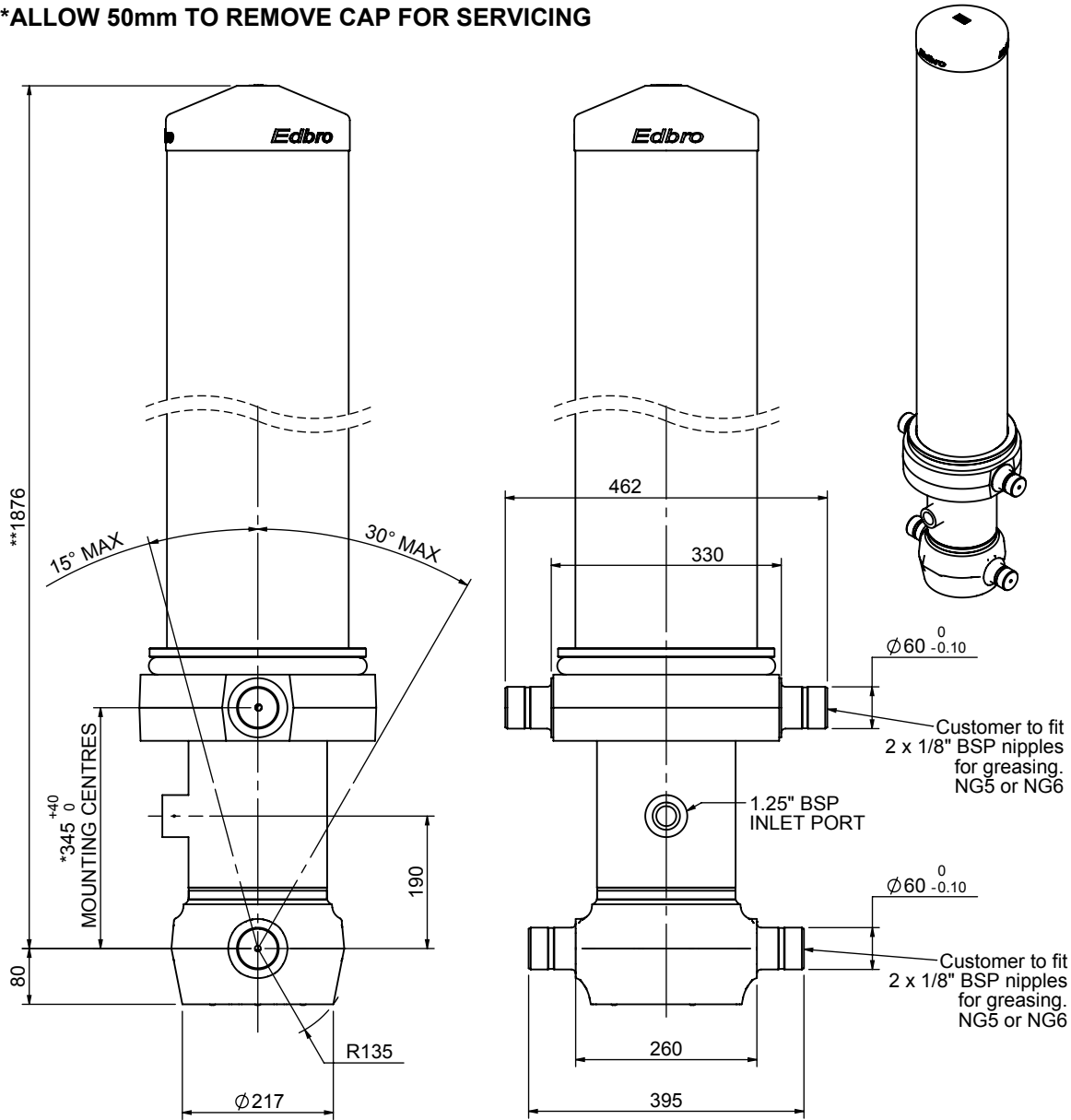


Cylinder 5 stage front end with outer cover

****ALLOW 50mm TO REMOVE CAP FOR SERVICING**

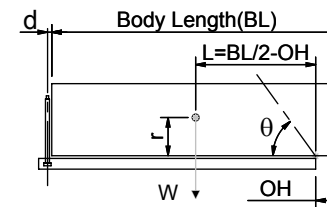


*Includes 12mm Pull Out.

CS170057983B19A11

SPECIFICATION		TIPPING CAPACITY : 39-48 TONNES***		
Stage	Diameter	Length	Stroke	Swept Volume
OUTER COVER	261	1495	-	-
0	199	1825	-	-
1	176	1790	1564	38
2	155	1790	1587	30
3	136	1790	1597	23
4	117	1790	1612	17
5	98	1790	1617	12
Total (+5/-10)			7977	
Final stroke reduced by	0	Priming Volume	25	
Cylinder Mass (Kg)	348	Total Volume (Litres)	25	
Maximum Pressure (Bar)	190	Max. first stage thrust	265 KN	

***TIPPING CAPACITY AT WORKING PRESSURE



BODY LENGTH (BL)						OH
9500	10000	10500				
41	49°	39	47°			150
44	51°	42	48°	40	46°	450
48	53°	45	50°	43	47°	750

d = 229; r = 900; Working Pressure 175 bar

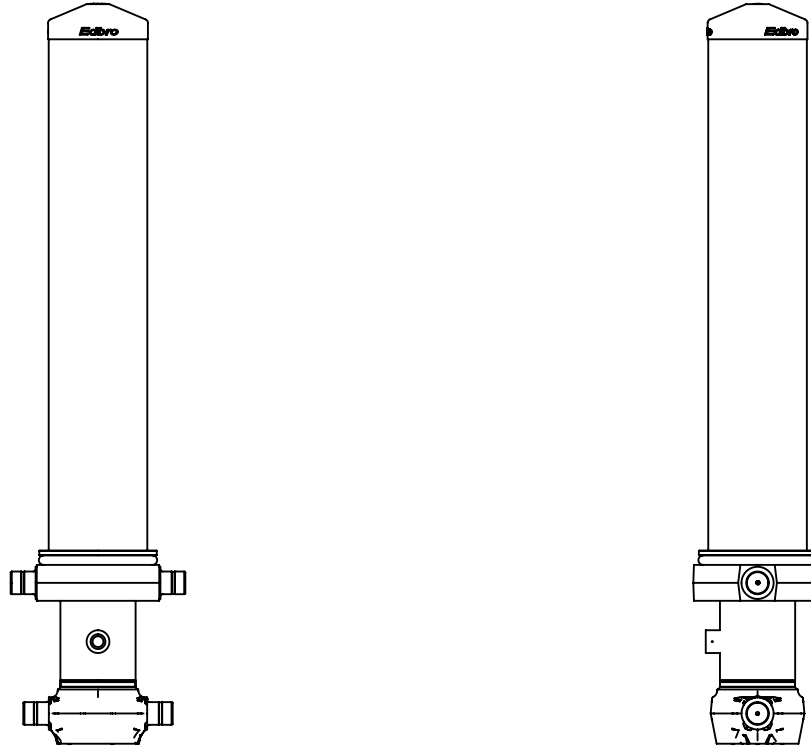
Tipping angle (θ)
Body + payload mass, W (tonne)

For guidance only;

Higher working pressures and tipping capacities may be possible.
To check your application email - applications@edbro.co.uk

NOTES

1. This cylinder is for lifting purposes only and side load conditions should be avoided
2. Cylinder is painted in primer paint to RAL5013
3. Refer to www.edbro.com for:-
 - Bracket details
 - Installation instructions that must be observed
 - Correct oil selection
 - An explanation of tipping capacity



CS170057983B19A11