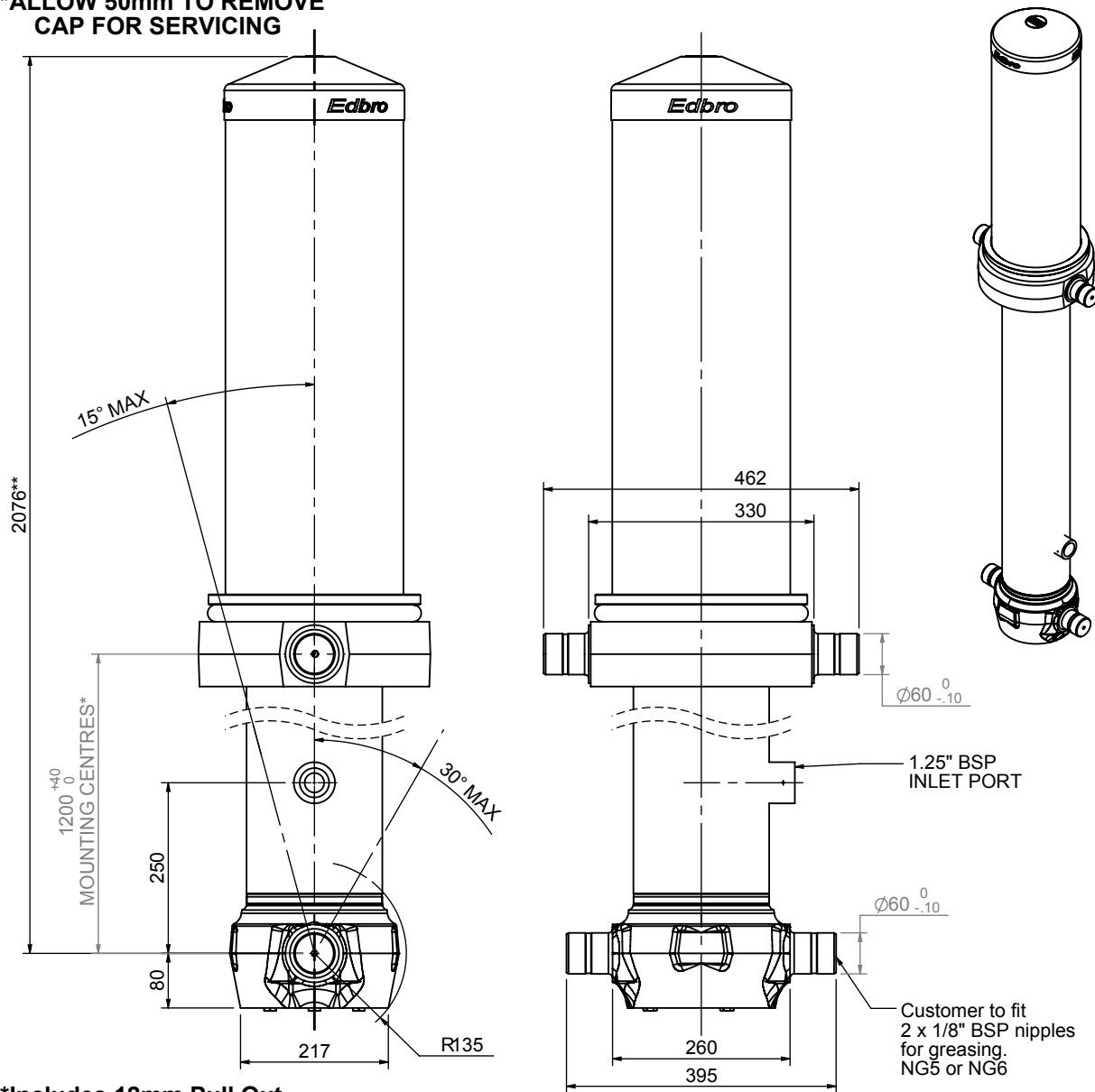


Cylinder 5 stage front end with Outer Cover

****ALLOW 50mm TO REMOVE CAP FOR SERVICING**



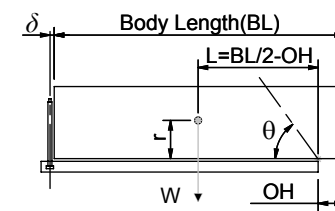
***Includes 12mm Pull Out**

CS170058233N25S16

SPECIFICATION		RATED CAPACITY : 27-38 TONNES***		
Stage	Diameter	Length	Stroke	Swept Volume
OUTER COVER	261	840	-	-
0	199	2025	-	-
1	176	1990	1764	43
2	155	1990	1787	34
3	136	1990	1797	26
4	117	1990	1812	19
5	98	1067	1067	8
Final stroke reduced by	750	Total (+5/-10)	8227	130
Cylinder Mass (Kg)	356.63	Priming Volume	27	
Rated Pressure (Bar)	120	Total Volume (Litres)	157	
Maximum Pressure (Bar)	175	Max. first stage thrust	260 KN	

***TIPPING CAPACITY AT RATED PRESSURE

d = 229 ; r = 900



BODY LENGTH (BL)					OH	
9500	10000	10500				
31	52°	29	49°	27	46°	150
34	53°	31	50°	29	48°	450
38	55°	34	52°	32	49°	750

— Tipping angle (θ)
— Body + payload mass, W (tonne)

For guidance only;

Higher Rated Pressures may be possible. To check your application, email Edbro plc at <applications@edbro.co.uk>

NOTES

- If hydraulic pressure is used to limit overloading, the system relief valve must be set to the Rated Pressure unless agreed otherwise by Edbro
- The system relief valve can be set to Maximum Pressure if the load is limited by other means. See RATINGS page for advice
- This cylinder is for lifting purposes only and sload conditions must be avoided
- Cylinder is painted in primer paint to RAL5013
- See bracket options page BRKT01, BRKT02
- See installation instructions INSTALL01
- Use oil according to specification OIL01



Edbro plc
Nelson Street, Bolton, Lancashire BL3 2JJ UK
Tel +44 (0) 1204 528888 Fax +44 (0) 1204 531957
Email: postmaster@edbro.com Web: www.edbro.com

Technical Specifications are subject to change without notice
Date Created/Updated: 02 September 2009 16:17:13
Refer www.edbro.com to confirm latest specification
All dimensions are in 'mm', unless otherwise stated