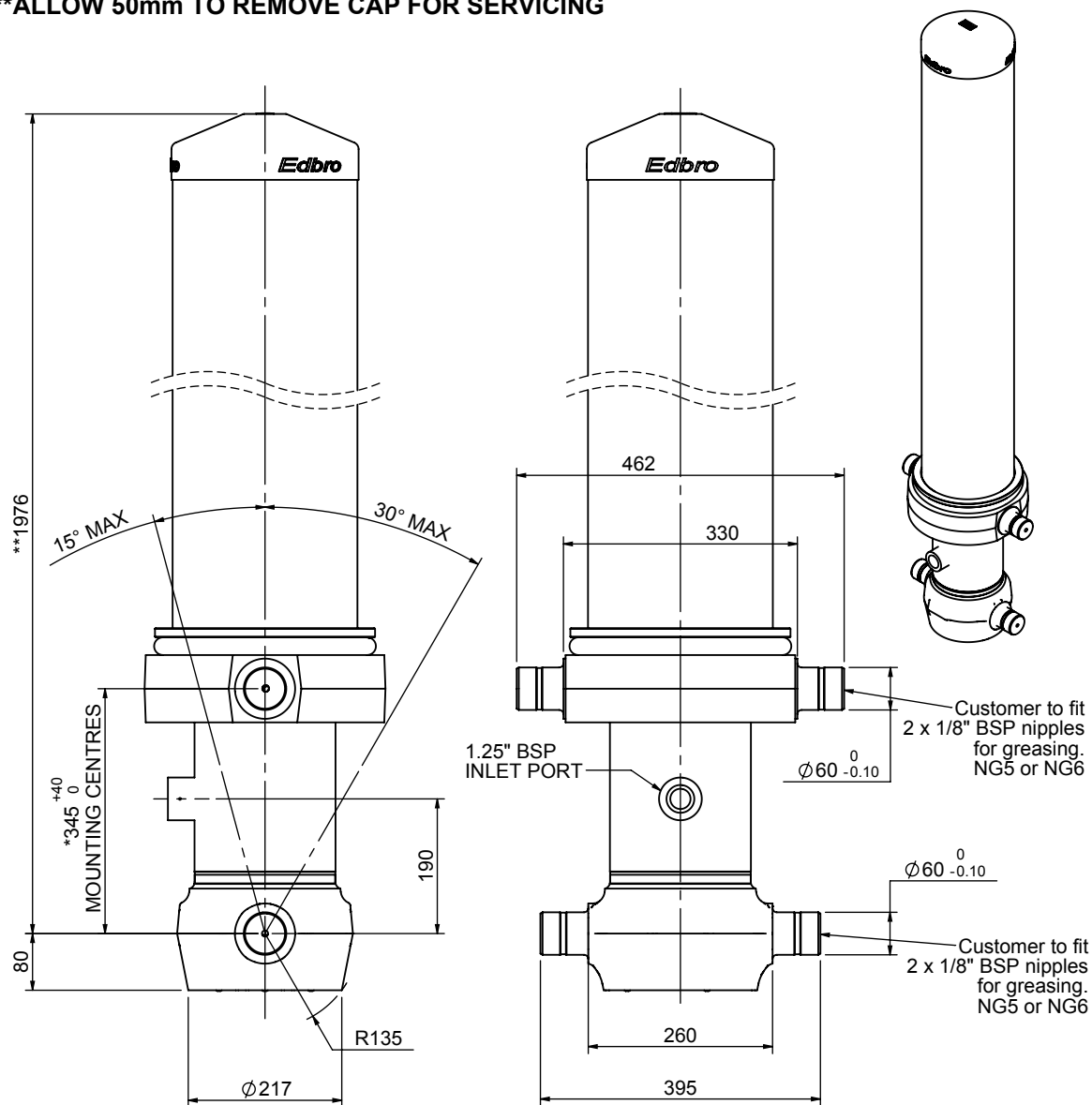


Cylinder 5 stage front end with outer cover

****ALLOW 50mm TO REMOVE CAP FOR SERVICING**

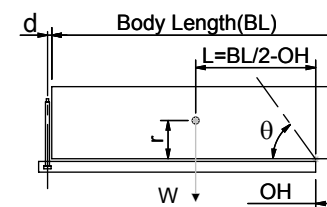


*Includes 12mm Pull Out.

CS170058483B19A11

SPECIFICATION		TIPPING CAPACITY : 29-38 TONNES***		
Stage	Diameter	Length	Stroke	Swept Volume
OUTER COVER	261	1595	-	-
0	199	1925	-	-
1	176	1890	1664	40
2	155	1890	1687	32
3	136	1890	1697	25
4	117	1890	1712	18
5	98	1890	1717	13
Total (+5/-10)			8477	128
Final stroke reduced by	0	Priming Volume		26
Cylinder Mass (Kg)	363	Total Volume (Litres)		154
Maximum Pressure (Bar)	190	Max. first stage thrust		265 KN

***TIPPING CAPACITY AT WORKING PRESSURE



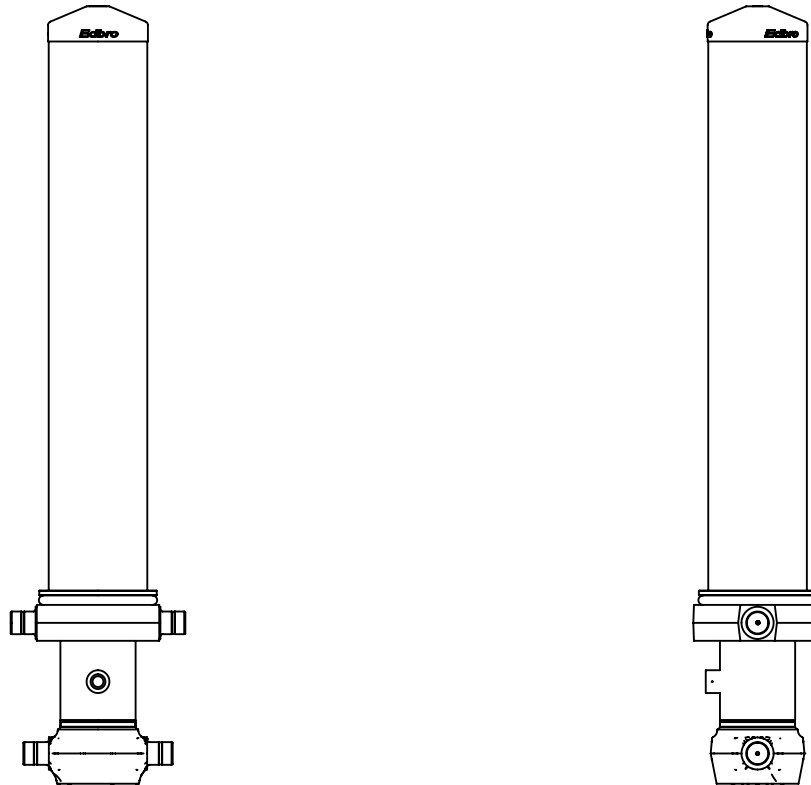
BODY LENGTH (BL)						OH
9750	10250	10750				
32	51°	31	49°	29	46°	150
35	53°	33	50°	31	48°	450
38	55°	35	52°	33	49°	750

$d = 229$; $r = 900$; Working Pressure 135 bar
 Tipping angle (θ)
 Body + payload mass, W (tonne)

For guidance only;
 Higher working pressures and tipping capacities may be possible.
 To check your application email - applications@edbro.co.uk

NOTES

1. This cylinder is for lifting purposes only and side load conditions should be avoided
2. Cylinder is painted in primer paint to RAL5013
3. Refer to www.edbro.com for:-
 - Bracket details
 - Installation instructions that must be observed
 - Correct oil selection
 - An explanation of tipping capacity



CS170058483B19A11