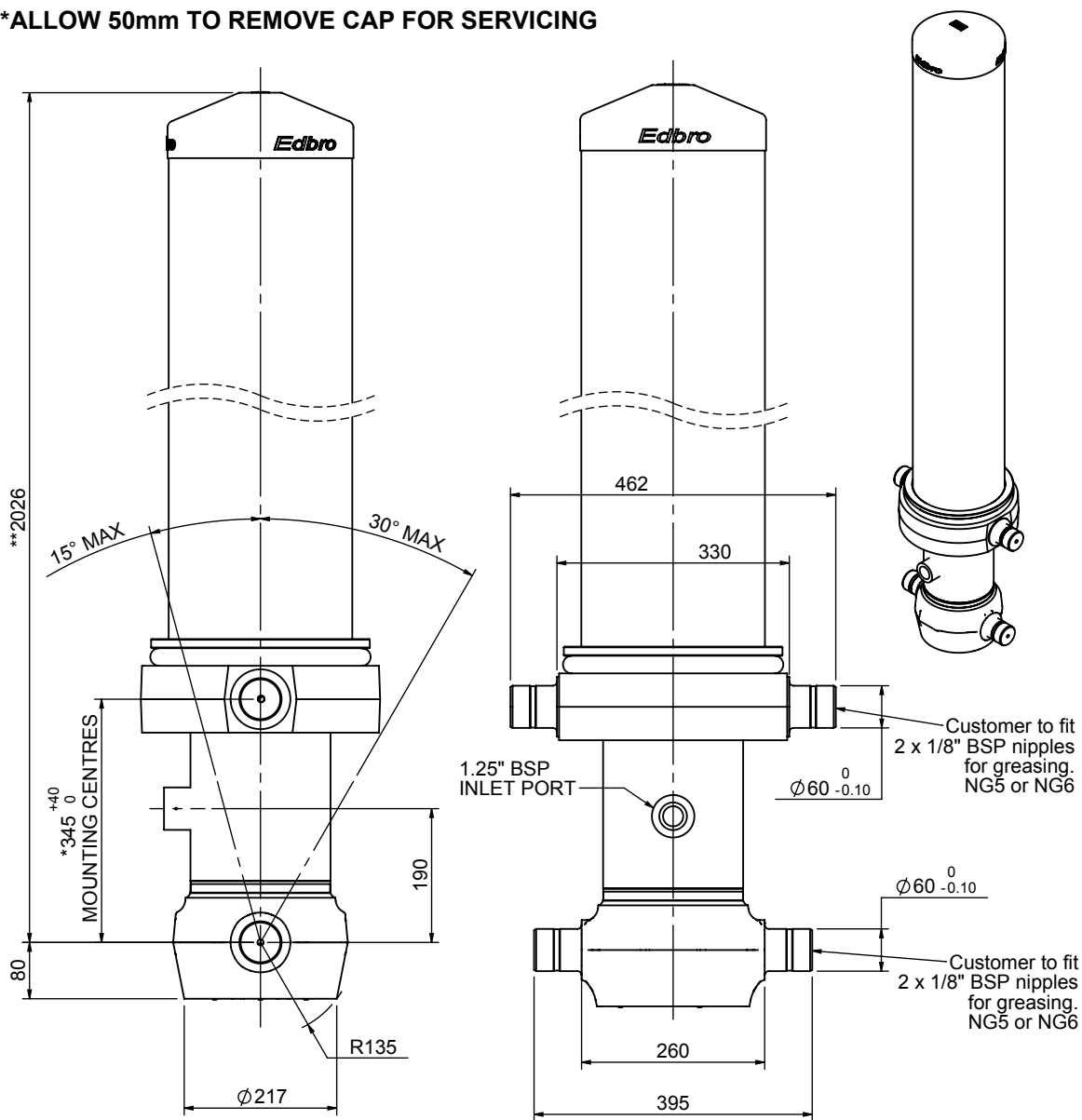


# Cylinder 5 stage front end with outer cover

**\*\*ALLOW 50mm TO REMOVE CAP FOR SERVICING**

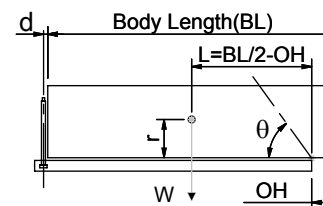


\*Includes 12mm Pull Out.

## CS170058733B19A11

SPECIFICATION		TIPPING CAPACITY : 26-34 TONNES***		
Stage	Diameter	Length	Stroke	Swept Volume
OUTER COVER	261	1645	-	-
0	199	1975	-	-
1	176	1940	1714	42
2	155	1940	1737	33
3	136	1940	1747	25
4	117	1940	1762	19
5	98	1940	1767	13
Total (+5/-10)			8727	132
Final stroke reduced by	0	Priming Volume		27
Cylinder Mass (Kg)	371	Total Volume (Litres)		159
Maximum Pressure (Bar)	190	Max. first stage thrust		265 KN

### \*\*\*TIPPING CAPACITY AT WORKING PRESSURE



BODY LENGTH (BL)						OH
10000	10500	11000				
29	52°	27	49°	26	47°	150
31	53°	29	50°	28	48°	450
34	55°	31	52°	30	49°	750

$d = 229$ ;  $r = 900$ ; Working Pressure 120 bar

Tipping angle (θ)

Body + payload mass, W (tonne)

### For guidance only;

Higher working pressures and tipping capacities may be possible.

To check your application email - [applications@edbro.co.uk](mailto:applications@edbro.co.uk)

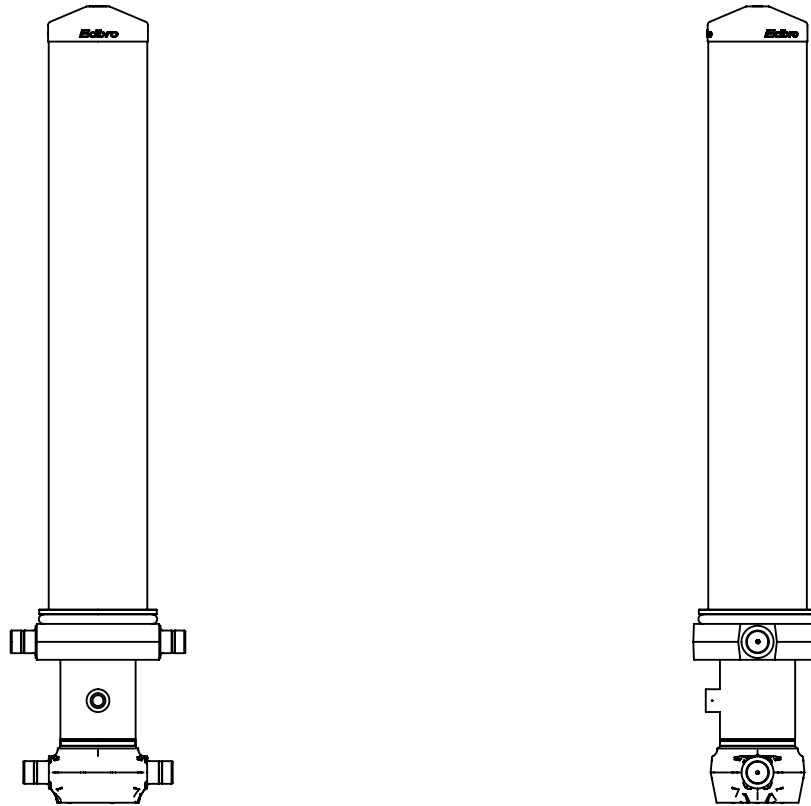
### NOTES

1. This cylinder is for lifting purposes only and side load conditions should be avoided
2. Cylinder is painted in primer paint to RAL5013
3. Refer to [www.edbro.com](http://www.edbro.com) for;-
  - Bracket details
  - Installation instructions that must be observed
  - Correct oil selection
  - An explanation of tipping capacity

**Edbro**  
SETTING THE INDUSTRY STANDARD

**Edbro plc**  
Nelson Street, Bolton, England, BL3 2JJ  
Tel +44 (0) 1204 528888 Fax +44 (0) 1204 531957  
Email: [postmaster@edbro.com](mailto:postmaster@edbro.com) Web: [www.edbro.com](http://www.edbro.com)

Technical Specifications are subject to change without notice  
Date Created/Updated: 08 August 2012  
Refer [www.edbro.com](http://www.edbro.com) to confirm latest specification  
All dimensions are in 'mm', unless otherwise stated



CS170058733B19A11