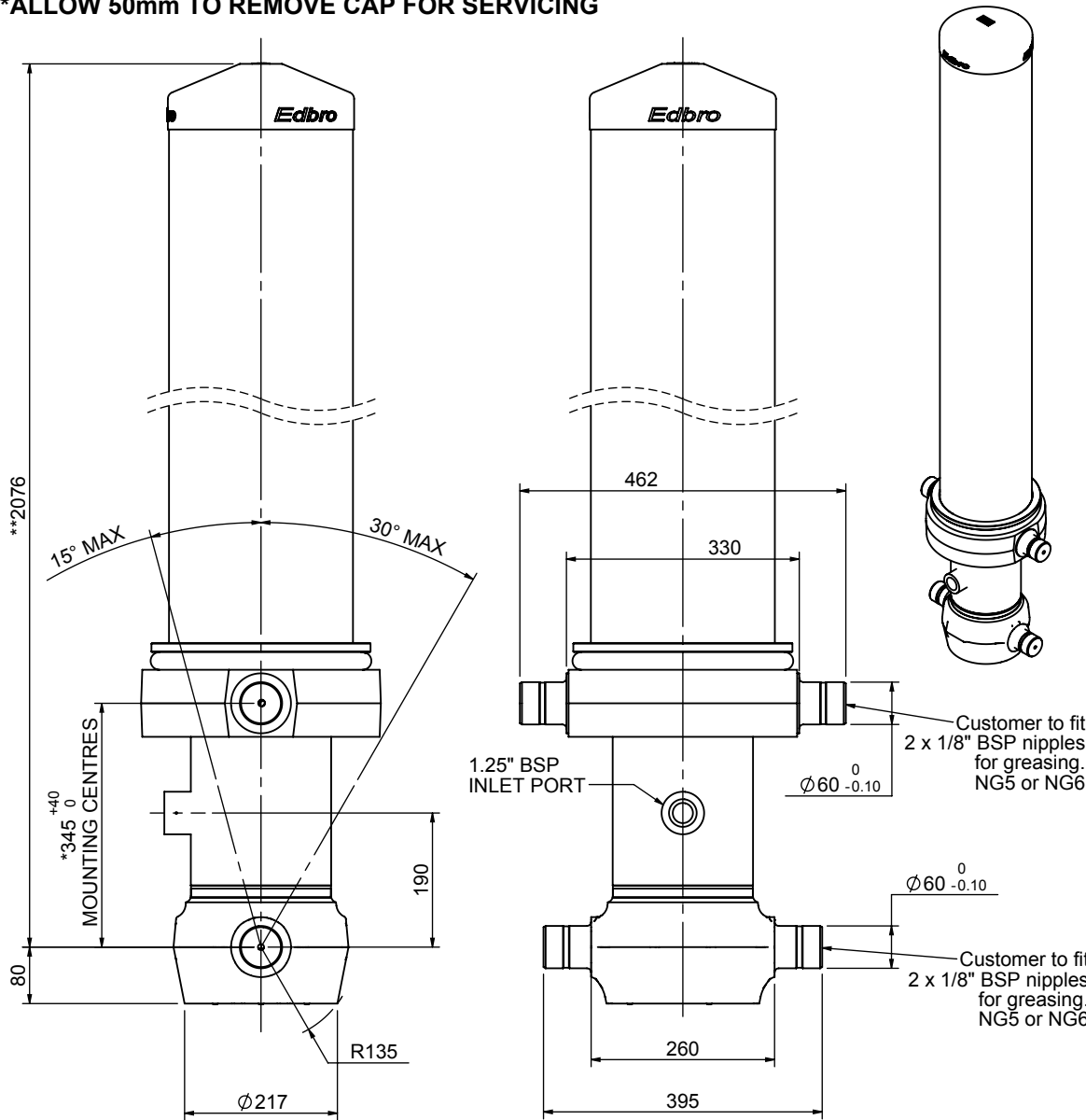


Cylinder 5 stage front end with outer cover

****ALLOW 50mm TO REMOVE CAP FOR SERVICING**

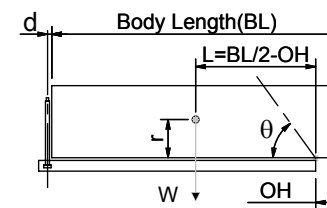


*Includes 12mm Pull Out.

CS170058983B19A11

SPECIFICATION		TIPPING CAPACITY : 24-30 TONNES***		
Stage	Diameter	Length	Stroke	Swept Volume
OUTER COVER	261	1695	-	-
0	199	2025	-	-
1	176	1990	1764	43
2	155	1990	1787	34
3	136	1990	1797	26
4	117	1990	1812	19
5	98	1990	1817	14
		Total (+5/-10)	8977	136
Final stroke reduced by	0	Priming Volume		28
Cylinder Mass (Kg)	378	Total Volume (Litres)		164
Maximum Pressure (Bar)	190	Max. first stage thrust	265 KN	

***TIPPING CAPACITY AT WORKING PRESSURE



BODY LENGTH (BL)						OH
10250	10750	11250				
26	52°	25	49°	24	47°	150
28	53°	27	51°	25	48°	450
30	55°	28	52°	27	50°	750

$d = 229$; $r = 900$; Working Pressure 110 bar
 Tipping angle (θ)
 Body + payload mass, W (tonne)

For guidance only;
 Higher working pressures and tipping capacities may be possible.
 To check your application email - applications@edbro.co.uk

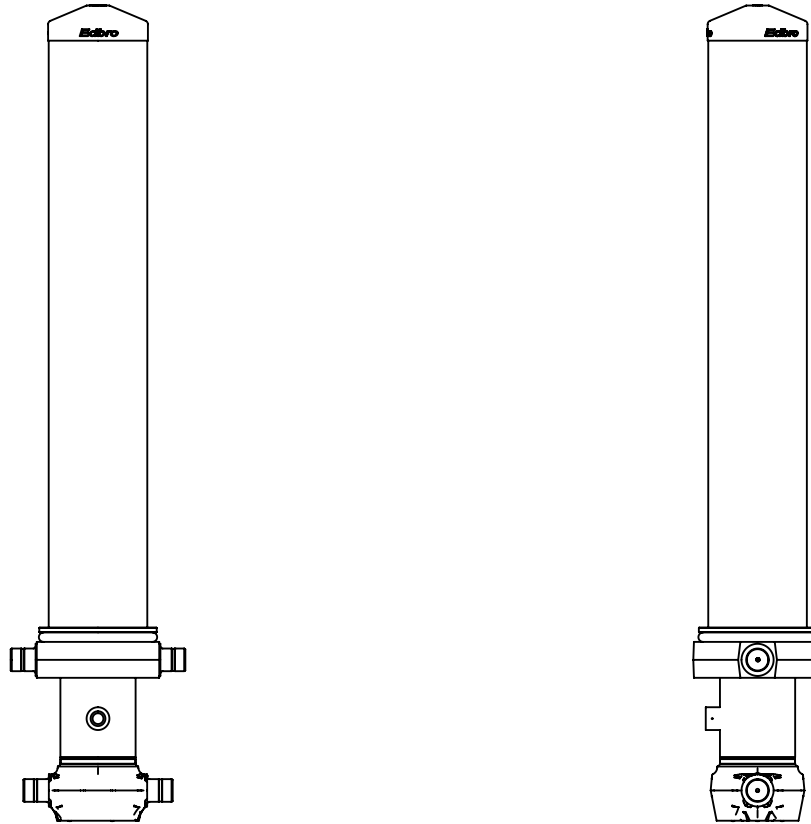
NOTES

1. This cylinder is for lifting purposes only and side load conditions should be avoided
2. Cylinder is painted in primer paint to RAL5013
3. Refer to www.edbro.com for:-
 - Bracket details
 - Installation instructions that must be observed
 - Correct oil selection
 - An explanation of tipping capacity



Edbro plc
 Nelson Street, Bolton, England, BL3 2JJ
 Tel +44 (0) 1204 528888 Fax +44 (0) 1204 531957
 Email: postmaster@edbro.com Web: www.edbro.com

Technical Specifications are subject to change without notice
 Date Created/Updated: 08 August 2012
 Refer www.edbro.com to confirm latest specification
 All dimensions are in 'mm', unless otherwise stated



CS170058983B19A11