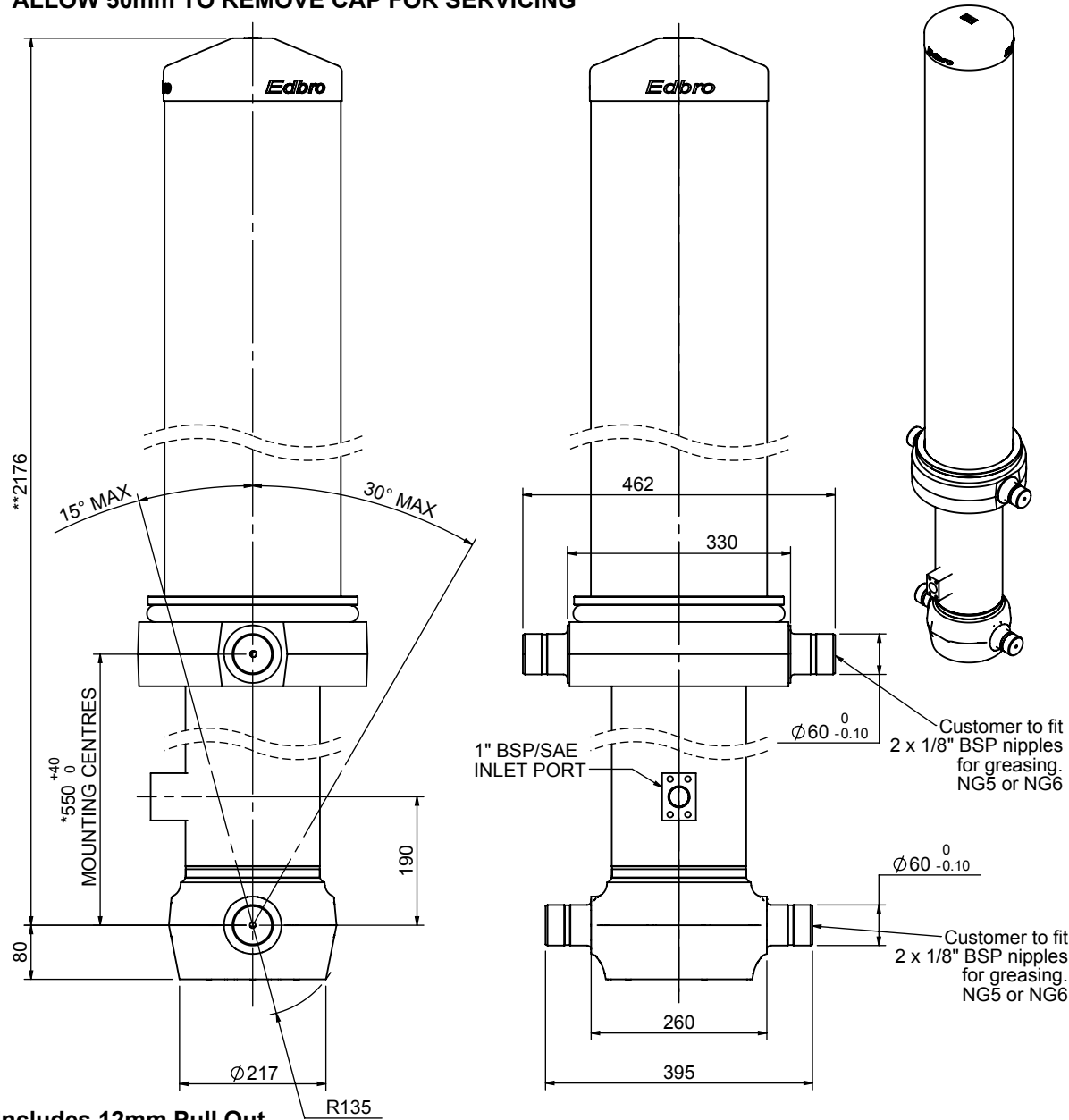


Cylinder 5 stage front end with outer cover

****ALLOW 50mm TO REMOVE CAP FOR SERVICING**

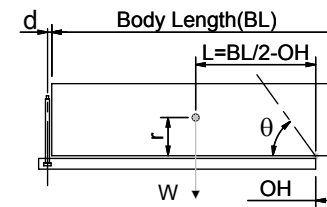


***Includes 12mm Pull Out.**

CS170058983S19L12

SPECIFICATION		TIPPING CAPACITY : 20-25 TONNES***		
Stage	Diameter	Length	Stroke	Swept Volume
OUTER COVER	261	1590	-	-
0	199	2125	-	-
1	176	2090	1864	45
2	155	2090	1887	36
3	136	2090	1897	28
4	117	2090	1912	21
5	98	2090	1417	11
Total (+5/-10)			8977	141
Final stroke reduced by	500	Priming Volume		29
Cylinder Mass (Kg)	388	Total Volume (Litres)		170
Maximum Pressure (Bar)	190	Max. first stage thrust		265 KN

***TIPPING CAPACITY AT WORKING PRESSURE



BODY LENGTH (BL)						OH
10250	10750	11250	10250	10750	11250	
21	49°	20	46°	20	44°	150
23	50°	22	48°	21	45°	450
25	52°	23	49°	22	47°	750

$d = 229$; $r = 900$; Working Pressure 90 bar

For guidance only;

Higher working pressures and tipping capacities may be possible.

To check your application email - applications@edbro.co.uk

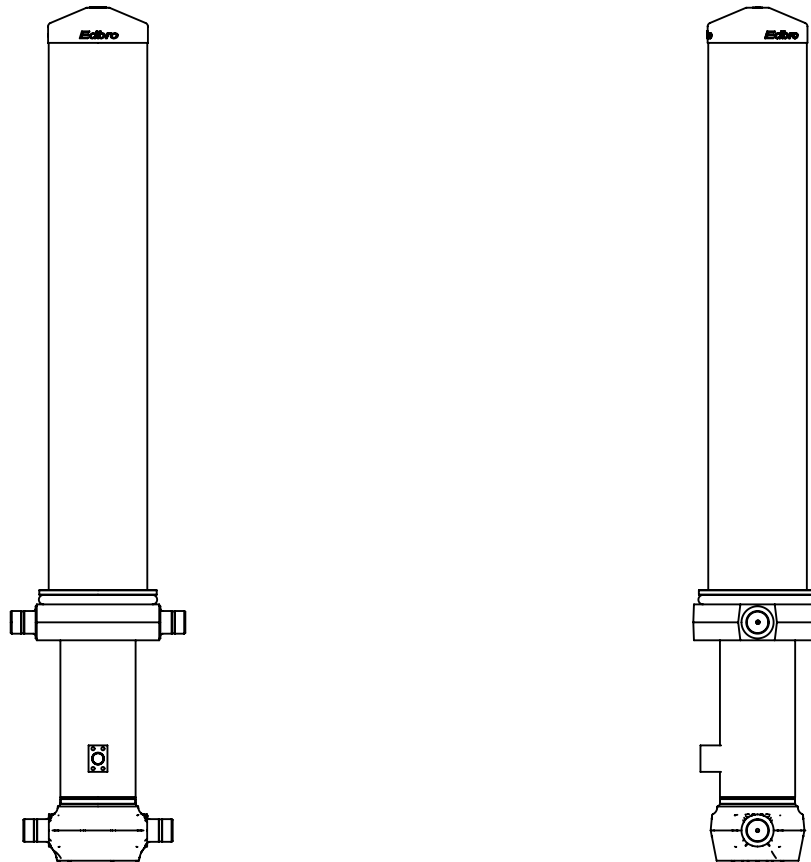
NOTES

1. This cylinder is for lifting purposes only and side load conditions should be avoided
2. Cylinder is painted in primer paint to RAL5013
3. Refer to www.edbro.com for:-
 - Bracket details
 - Installation instructions that must be observed
 - Correct oil selection
 - An explanation of tipping capacity



Edbro plc
 Nelson Street, Bolton, England, BL3 2JJ
 Tel +44 (0) 1204 528888 Fax +44 (0) 1204 531957
 Email: postmaster@edbro.com Web: www.edbro.com

Technical Specifications are subject to change without notice
 Date Created/Updated: 27 July 2012
 Refer www.edbro.com to confirm latest specification
 All dimensions are in 'mm', unless otherwise stated



CS170058983S19L12