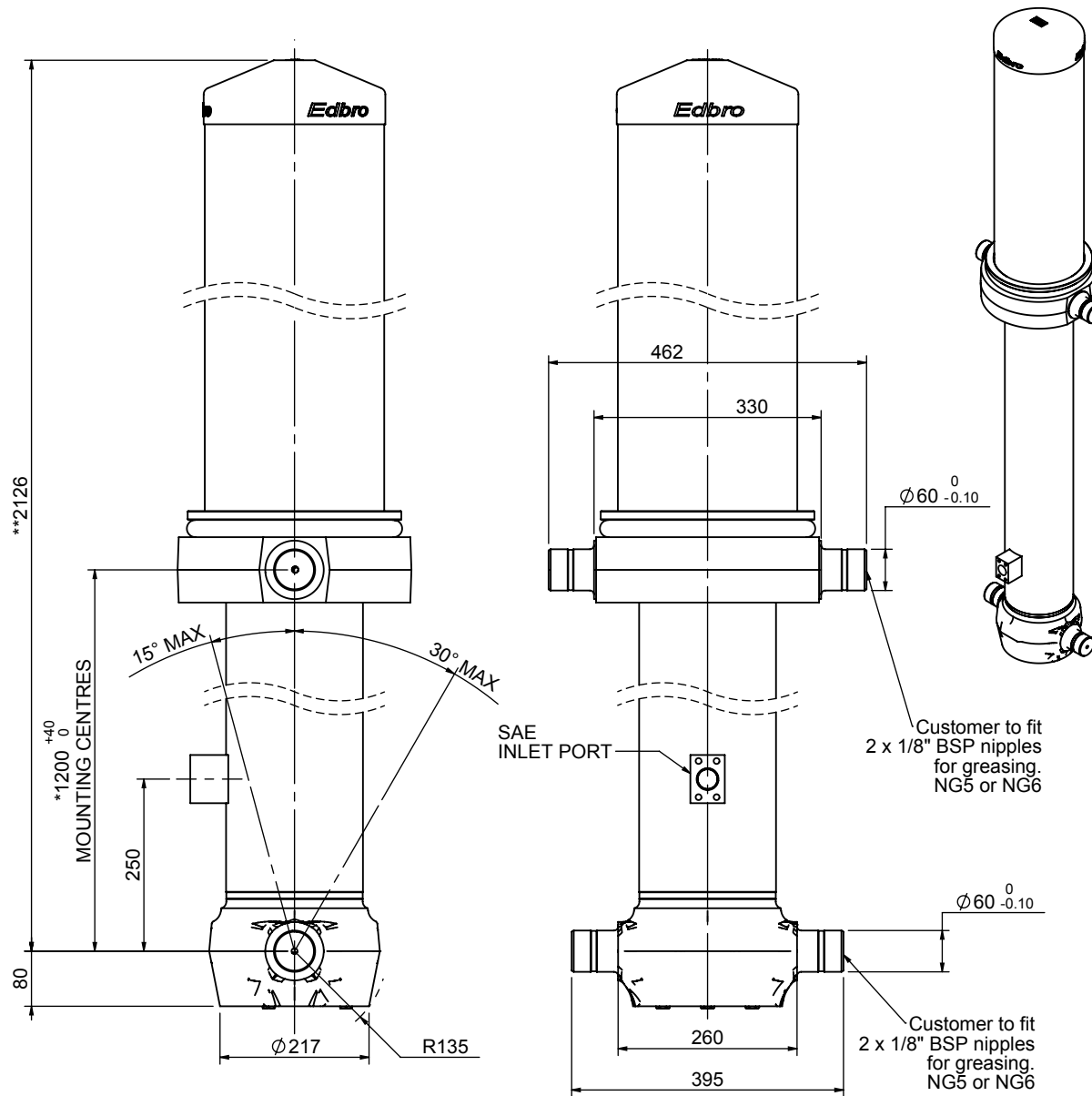


Cylinder 5 stage front end with outer cover

****ALLOW 50mm TO REMOVE CAP FOR SERVICING**

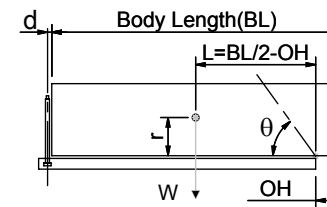


*Includes 12mm Pull Out.

CS170059233S25A16

SPECIFICATION		TIPPING CAPACITY : 19-23 TONNES***		
Stage	Diameter	Length	Stroke	Swept Volume
OUTER COVER	261	890	-	-
0	199	2075	-	-
1	176	2040	1814	44
2	155	2040	1837	35
3	136	2040	1847	27
4	117	2040	1862	20
5	98	2040	1867	14
Total (+5/-10)			9227	140
Final stroke reduced by	0	Priming Volume		25
Cylinder Mass (Kg)	358	Total Volume (Litres)		165
Maximum Pressure (Bar)	190	Max. first stage thrust		265 KN

***TIPPING CAPACITY AT WORKING PRESSURE



BODY LENGTH (BL)					OH	
11000	11500	12000				
20	50°	19	47°	19	45°	150
21	51°	21	49°	20	47°	450
23	53°	22	50°	21	48°	750

d = 229; r = 900; Working Pressure 90 bar

For guidance only;

Higher working pressures and tipping capacities may be possible.

To check your application email - applications@edbro.co.uk

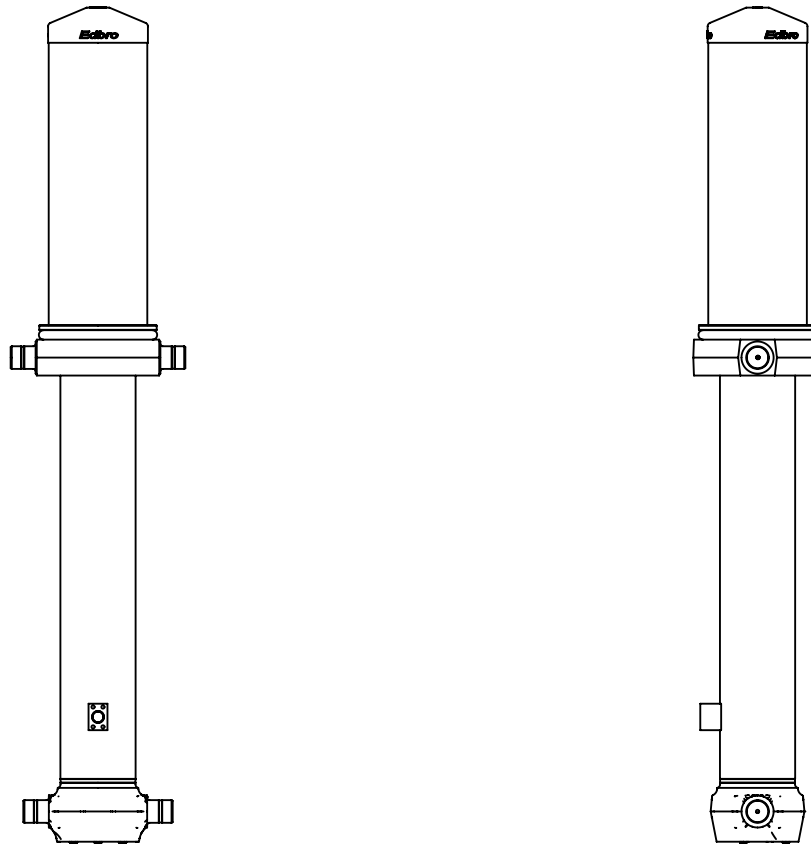
NOTES

1. This cylinder is for lifting purposes only and side load conditions should be avoided
2. Cylinder is painted in primer paint to RAL5013
3. Refer to www.edbro.com for;-
 - Bracket details
 - Installation instructions that must be observed
 - Correct oil selection
 - An explanation of tipping capacity



Edbro plc
 Nelson Street, Bolton, England, BL3 2JJ
 Tel +44 (0) 1204 528888 Fax +44 (0) 1204 531957
 Email: postmaster@edbro.com Web: www.edbro.com

Technical Specifications are subject to change without notice
 Date Created/Updated: 12 March 2014
 Refer www.edbro.com to confirm latest specification
 All dimensions are in 'mm', unless otherwise stated



CS170059233S25A16