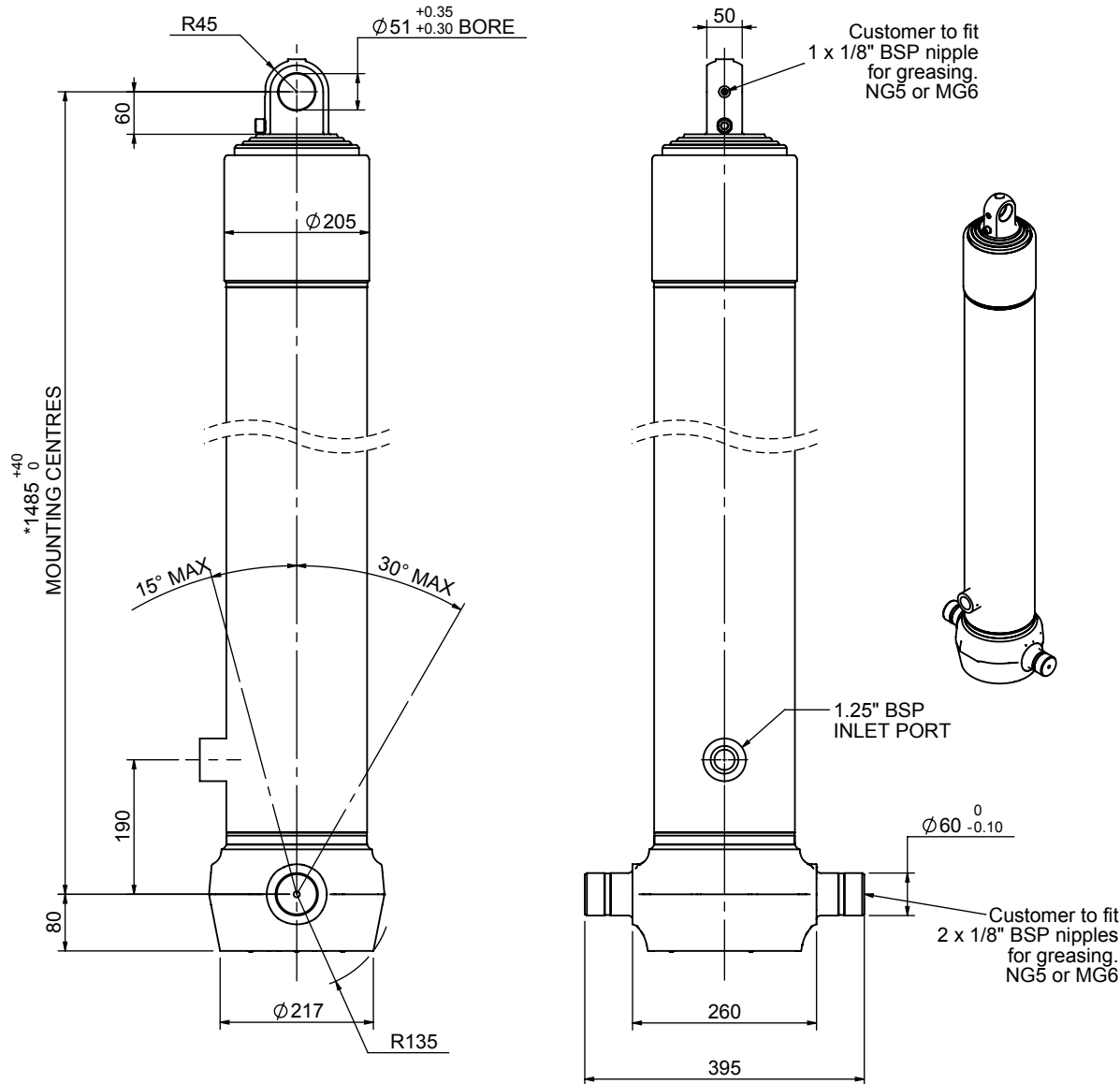


# Cylinder 4 stage front end with plain eye

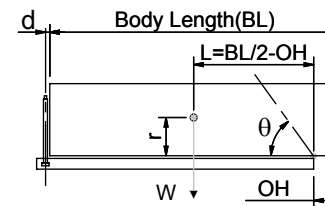


\*Includes 9 mm Pull Out.  
Last Stage Chrome Plated

## CS170E44966B19A01

SPECIFICATION		TIPPING CAPACITY : 38-60 TONNES***		
Stage	Diameter	Length	Stroke	Swept Volume
-	-	-	-	-
-	-	-	-	-
0	199	1475	-	-
1	176	1440	1217	30
2	155	1440	1237	23
3	136	1440	1247	18
4	117	1440	1262	14
Total (+5/-10)			4963	85
Final stroke reduced by	0	Priming Volume		21
Cylinder Mass (Kg)	203	Total Volume (Litres)		106
Maximum Pressure (Bar)	190	Max. first stage thrust		265 KN

### \*\*\*TIPPING CAPACITY AT WORKING PRESSURE



BODY LENGTH (BL)						OH
6250		6750		7250		
44	49°	41	45°	38	42°	150
50	52°	45	47°	42	44°	450
60	55°	52	50°	47	46°	750

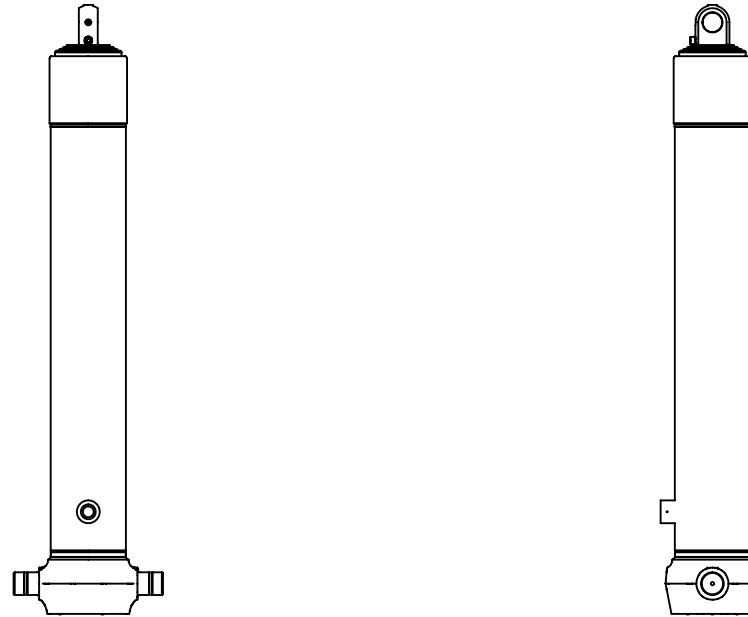
$d = 0$ ;  $r = 900$ ; Working Pressure 130 bar

### For guidance only;

Higher working pressures and tipping capacities may be possible.  
To check your application email - [applications@edbro.co.uk](mailto:applications@edbro.co.uk)

### NOTES

- This cylinder is for lifting purposes only and side load conditions should be avoided
- Cylinder is painted in primer paint to RAL5013
- Refer to [www.edbro.com](http://www.edbro.com) for:-
  - Bracket details
  - Installation instructions that must be observed
  - Correct oil selection
  - An explanation of tipping capacity



CS170E44966B19A01