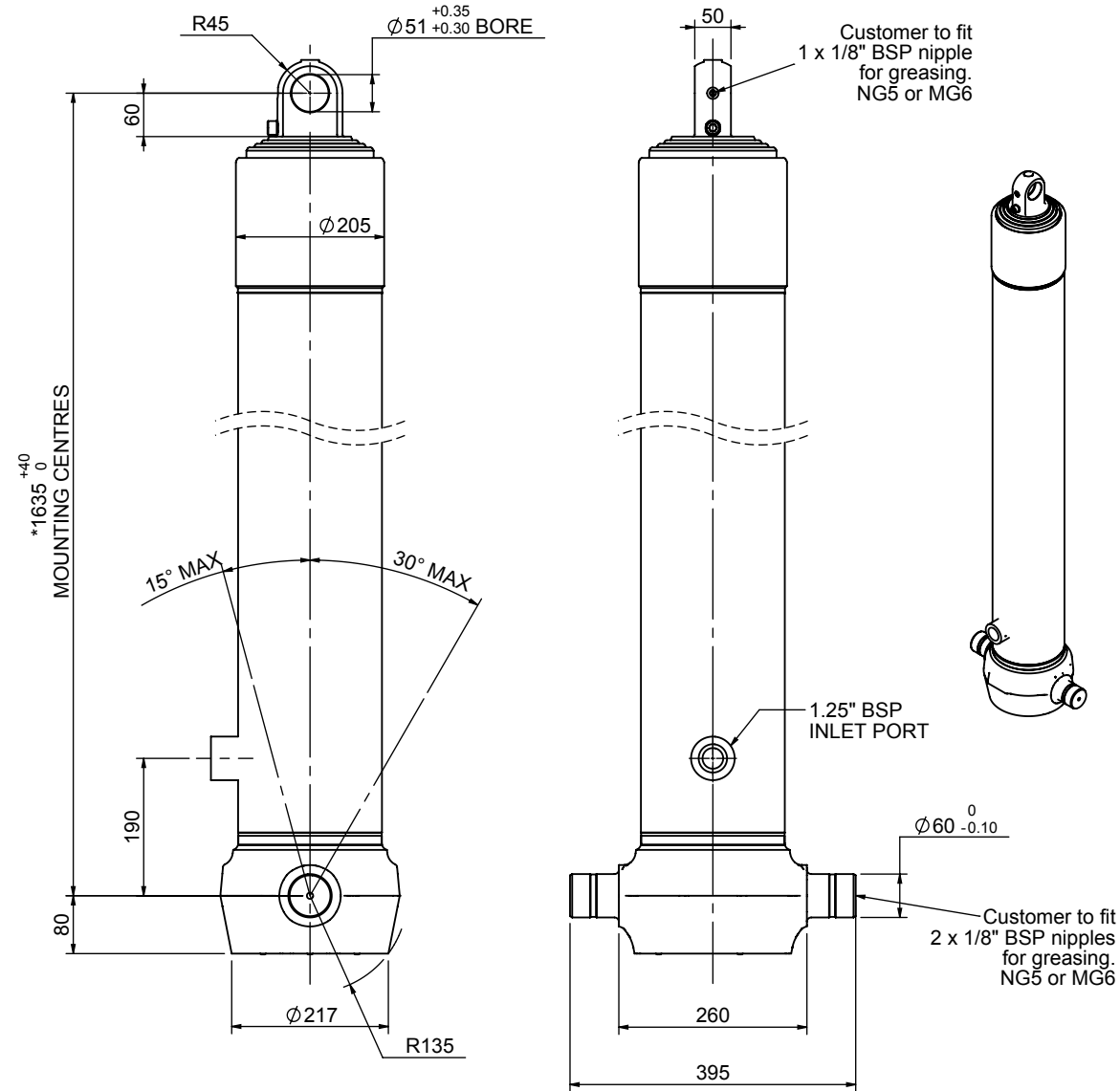


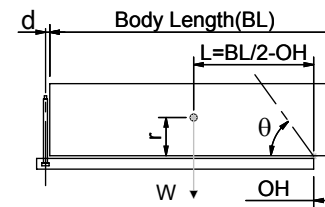
Cylinder 4 stage front end with plain eye



CS170E45566B19A01

SPECIFICATION		TIPPING CAPACITY : 39-56 TONNES***		
Stage	Diameter	Length	Stroke	Swept Volume
-	-	-	-	-
-	-	-	-	-
0	199	1625	-	-
1	176	1590	1367	33
2	155	1590	1387	26
3	136	1590	1397	20
4	117	1590	1412	15
Total (+5/-10)			5739	94
Final stroke reduced by	0	Priming Volume		24
Cylinder Mass (Kg)	220	Total Volume (Litres)		200
Maximum Pressure (Bar)	190	Max. first stage thrust		265 KN

***TIPPING CAPACITY AT WORKING PRESSURE



BODY LENGTH (BL)						OH
7000		7500		8000		
44	49°	41	45°	39	42°	150
49	52°	45	47°	42	44°	450
56	54°	50	50°	46	46°	750

d = 0; r = 900; Working Pressure 135 bar

For guidance only;

Higher working pressures and tipping capacities may be possible.

To check your application email - applications@edbro.co.uk

NOTES

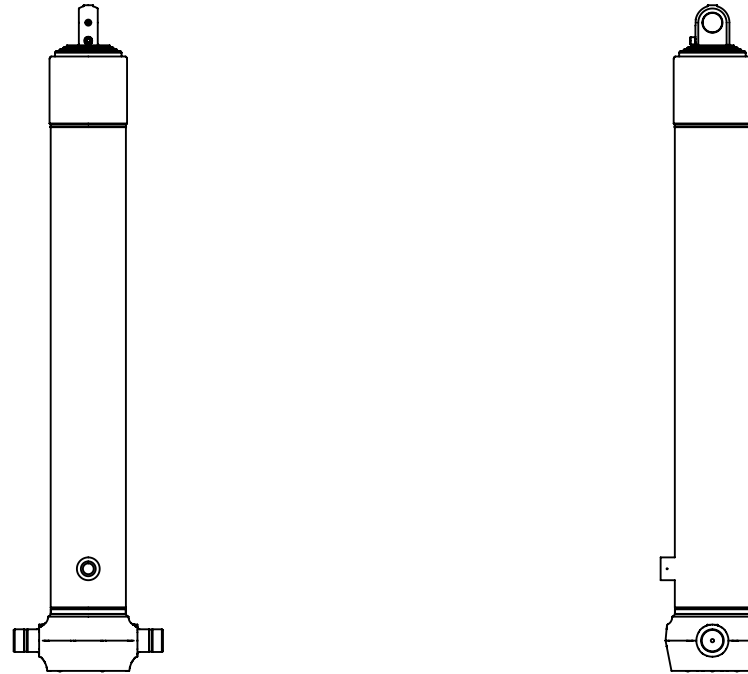
1. This cylinder is for lifting purposes only and side load conditions should be avoided
2. Cylinder is painted in primer paint to RAL5013
3. Refer to www.edbro.com for:-
 - Bracket details
 - Installation instructions that must be observed
 - Correct oil selection
 - An explanation of tipping capacity

*Includes 9 mm Pull Out.
Last Stage Chrome Plated

Edbro
SETTING THE INDUSTRY STANDARD

Edbro plc
Nelson Street, Bolton, England, BL3 2JJ
Tel +44 (0) 1204 528888 Fax +44 (0) 1204 531957
Email: postmaster@edbro.com Web: www.edbro.com

Technical Specifications are subject to change without notice
Date Created/Updated: 13 August 2012
Refer www.edbro.com to confirm latest specification
All dimensions are in 'mm', unless otherwise stated



CS170E45566B19A01