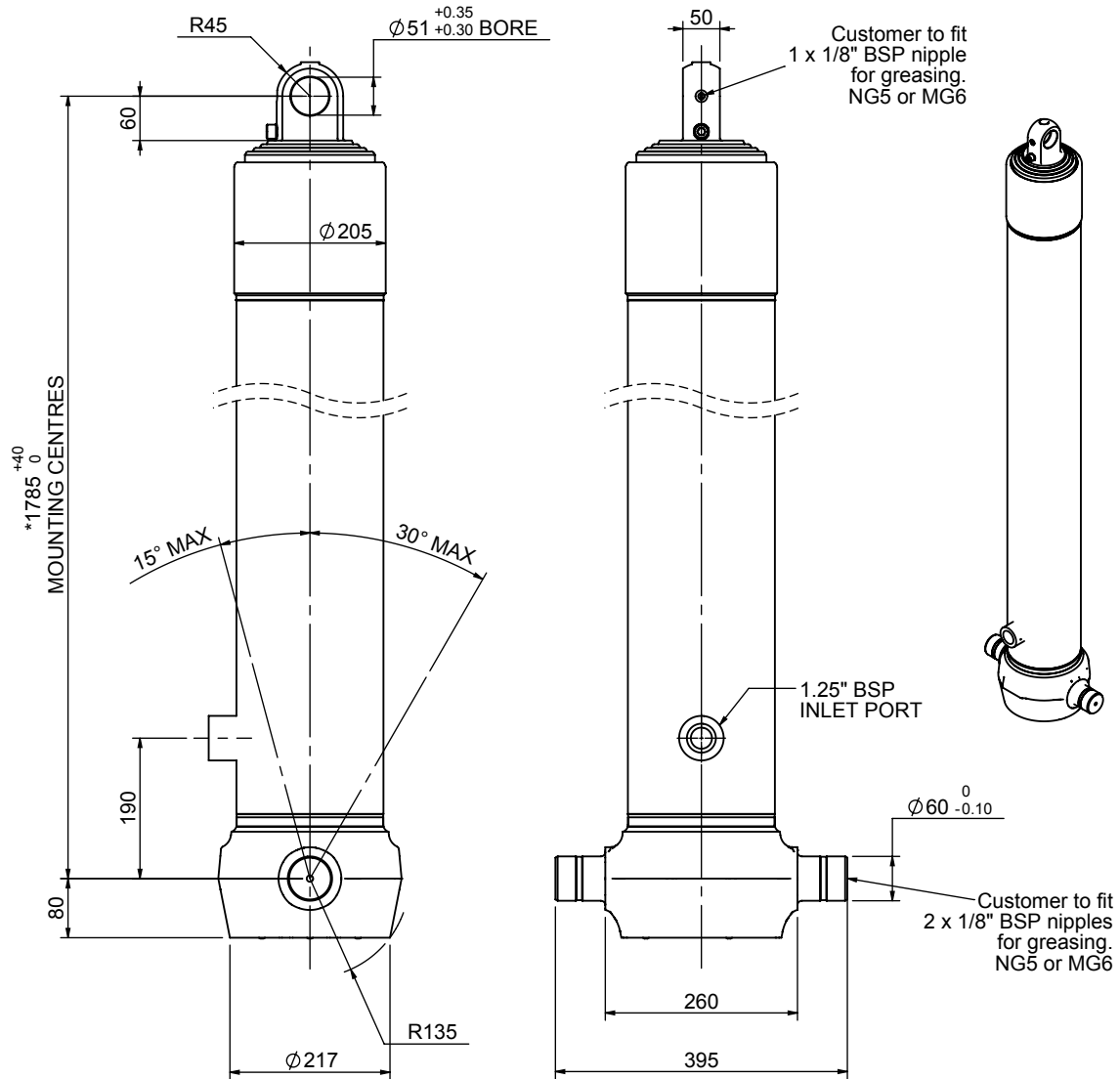


# Cylinder 4 stage front end with plain eye

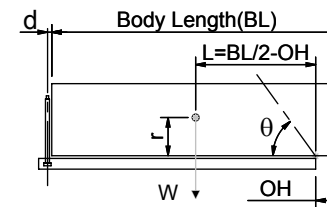


\*Includes 9 mm Pull Out.  
Last Stage Chrome Plated

# CS170E46166B19A01

| SPECIFICATION           |          | TIPPING CAPACITY : 39-53 TONNES*** |        |              |
|-------------------------|----------|------------------------------------|--------|--------------|
| Stage                   | Diameter | Length                             | Stroke | Swept Volume |
| -                       | -        | -                                  | -      | -            |
| -                       | -        | -                                  | -      | -            |
| 0                       | 199      | 1775                               | -      | -            |
| 1                       | 176      | 1740                               | 1517   | 37           |
| 2                       | 155      | 1740                               | 1537   | 29           |
| 3                       | 136      | 1740                               | 1547   | 22           |
| 4                       | 117      | 1740                               | 1562   | 17           |
| Total (+5/-10)          |          |                                    | 6163   | 105          |
| Final stroke reduced by | 0        | Priming Volume                     |        | 25           |
| Cylinder Mass (Kg)      | 237      | Total Volume (Litres)              |        | 130          |
| Maximum Pressure (Bar)  | 190      | Max. first stage thrust            |        | 265 KN       |

### \*\*\*TIPPING CAPACITY AT WORKING PRESSURE



| BODY LENGTH (BL) |     |      |     |      |     | OH  |
|------------------|-----|------|-----|------|-----|-----|
| 7500             |     | 8000 |     | 8500 |     |     |
| 43               | 49° | 41   | 46° | 39   | 43° | 150 |
| 47               | 51° | 44   | 47° | 42   | 44° | 450 |
| 53               | 54° | 49   | 50° | 45   | 46° | 750 |

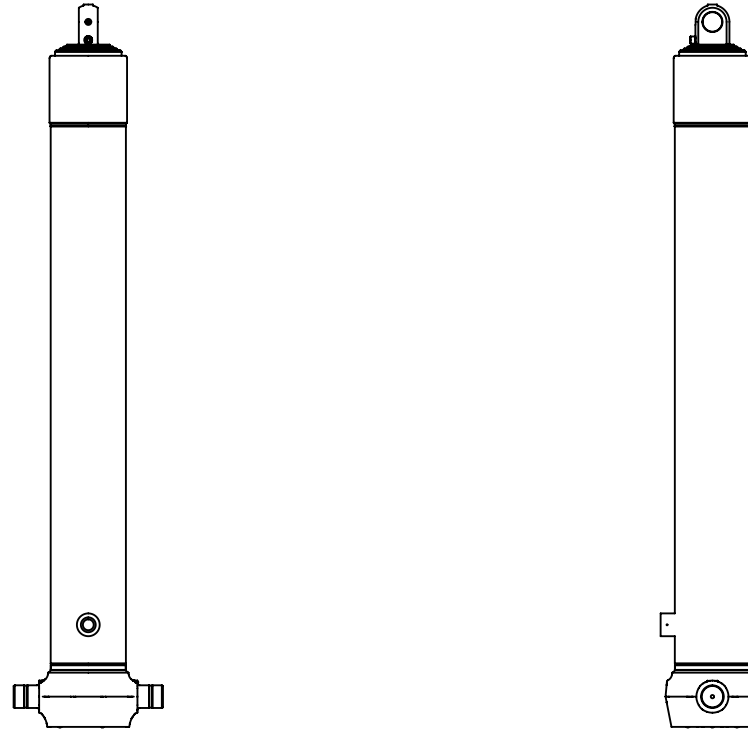
d = 0; r = 900; Working Pressure 135 bar

### For guidance only;

Higher working pressures and tipping capacities may be possible.  
To check your application email - [applications@edbro.co.uk](mailto:applications@edbro.co.uk)

### NOTES

1. This cylinder is for lifting purposes only and side load conditions should be avoided
2. Cylinder is painted in primer paint to RAL5013
3. Refer to [www.edbro.com](http://www.edbro.com) for:-
  - Bracket details
  - Installation instructions that must be observed
  - Correct oil selection
  - An explanation of tipping capacity



CS170E46166B19A01