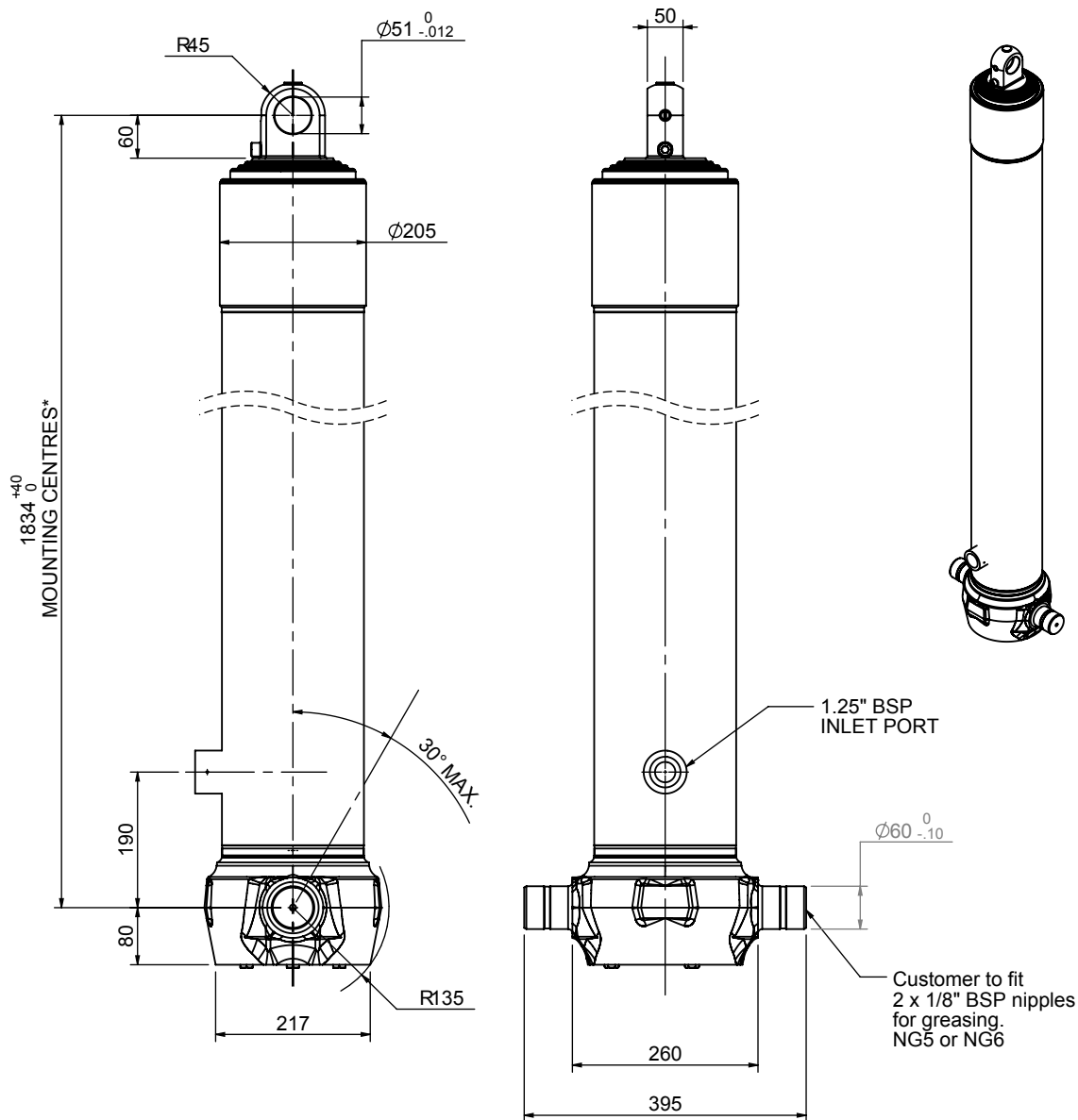


Cylinder 4 stage front end with plain eye



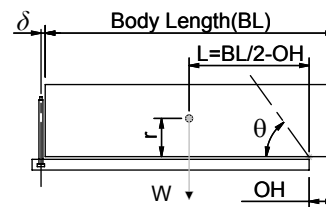
*Includes 9mm Pull Out Last Stage Chrome Plated

CS170E46366B19A01

SPECIFICATION		RATED CAPACITY : 42-51 TONNES***		
Stage	Diameter	Length	Stroke	Swept Volume
-	-	-	-	-
-	-	-	-	-
0	199	1825	-	-
1	176	1790	1567	38
2	155	1790	1587	30
3	136	1790	1597	23
4	117	1790	1612	17
Final stroke reduced by	0	Total (+5/-10)	6363	108
Cylinder Mass (Kg)	246.65	Priming Volume		27
Rated Pressure (Bar)	135	Total Volume (Litres)		135
Maximum Pressure (Bar)	175	Max. first stage thrust		260 KN

***TIPPING CAPACITY AT RATED PRESSURE

d = 0 ; r = 900



BODY LENGTH (BL)					OH	
8000	8500	9000				
42	49°				150	
46	51°	43	48°		450	
51	53°	47	50°	44	46°	750

— Tipping angle (θ)
— Body + payload mass, W (tonne)

For guidance only;

Higher Rated Pressures may be possible. To check your application, email Edbro plc at <applications@edbro.co.uk>

NOTES

- If hydraulic pressure is used to limit overloading, the system relief valve must be set to the Rated Pressure unless agreed otherwise by Edbro
- The system relief valve can be set to Maximum Pressure if the load is limited by other means. See RATINGS page for advice
- This cylinder is for lifting purposes only and sload conditions must be avoided
- Cylinder is painted in primer paint to RAL5013
- See bracket options page BRKT01, BRKT02
- See installation instructions INSTALL01
- Use oil according to specification OIL01