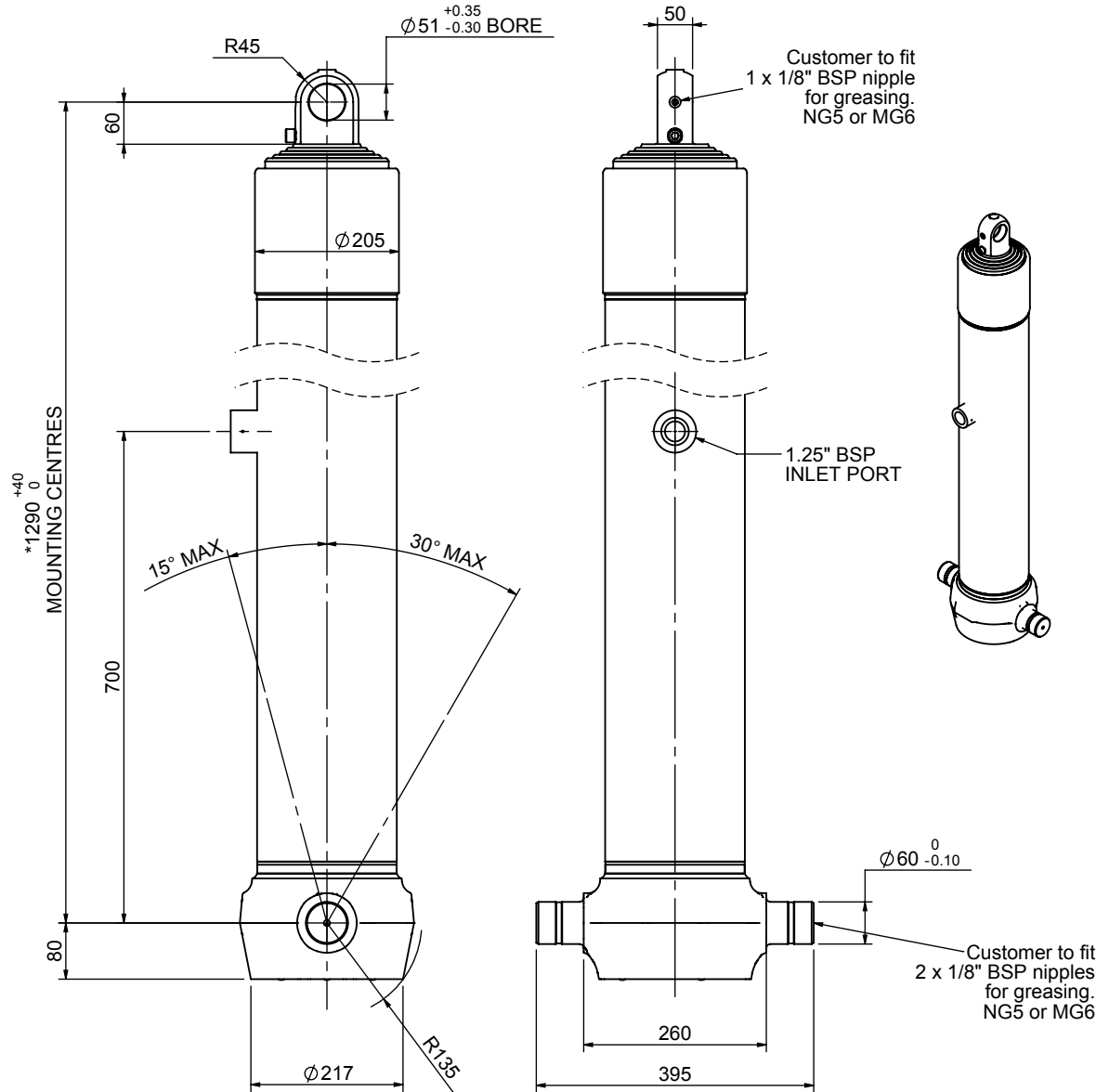


Cylinder 5 stage front end with plain eye

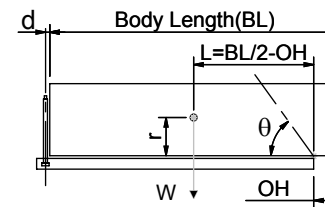


*Includes 9mm Pull Out.
Last Stage Chrome Plated

CS170E55233B70A01

SPECIFICATION		TIPPING CAPACITY : 37-56 TONNES***		
Stage	Diameter	Length	Stroke	Swept Volume
-	-	-	-	-
0	199	1275	-	-
1	176	1240	1017	25
2	155	1240	1037	20
3	136	1240	1047	15
4	117	1240	1062	11
5	98	1240	1067	8
Total (+5/-10)			5230	79
Final stroke reduced by	0	Priming Volume		16
Cylinder Mass (Kg)	195	Total Volume (Litres)		95
Maximum Pressure (Bar)	190	Max. first stage thrust		265 KN

***TIPPING CAPACITY AT WORKING PRESSURE



BODY LENGTH (BL)						OH
6750	7250	7750				
42	48°	39	44°	37	41°	150
47	50°	43	46°	40	43°	450
56	53°	49	48°	44	45°	750

d = 0; r = 900; Working Pressure 175 bar

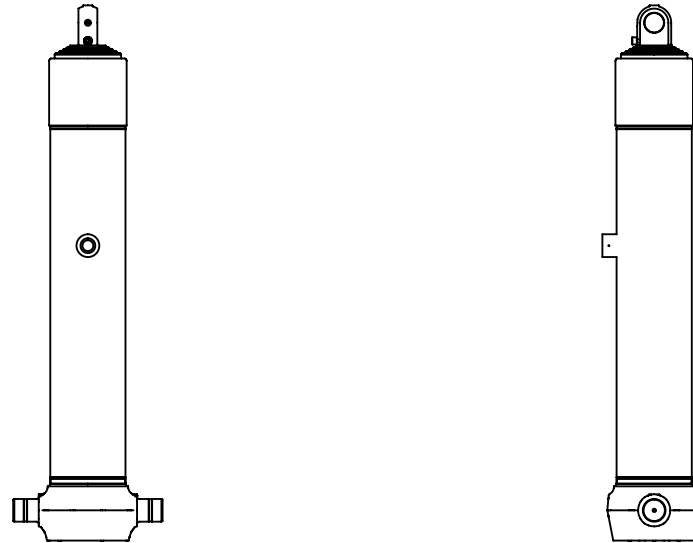
For guidance only;

Higher working pressures and tipping capacities may be possible.

To check your application email - applications@edbro.co.uk

NOTES

- This cylinder is for lifting purposes only and side load conditions should be avoided
- Cylinder is painted in primer paint to RAL5013
- Refer to www.edbro.com for:-
 - Bracket details
 - Installation instructions that must be observed
 - Correct oil selection
 - An explanation of tipping capacity



CS170E55233B70A01