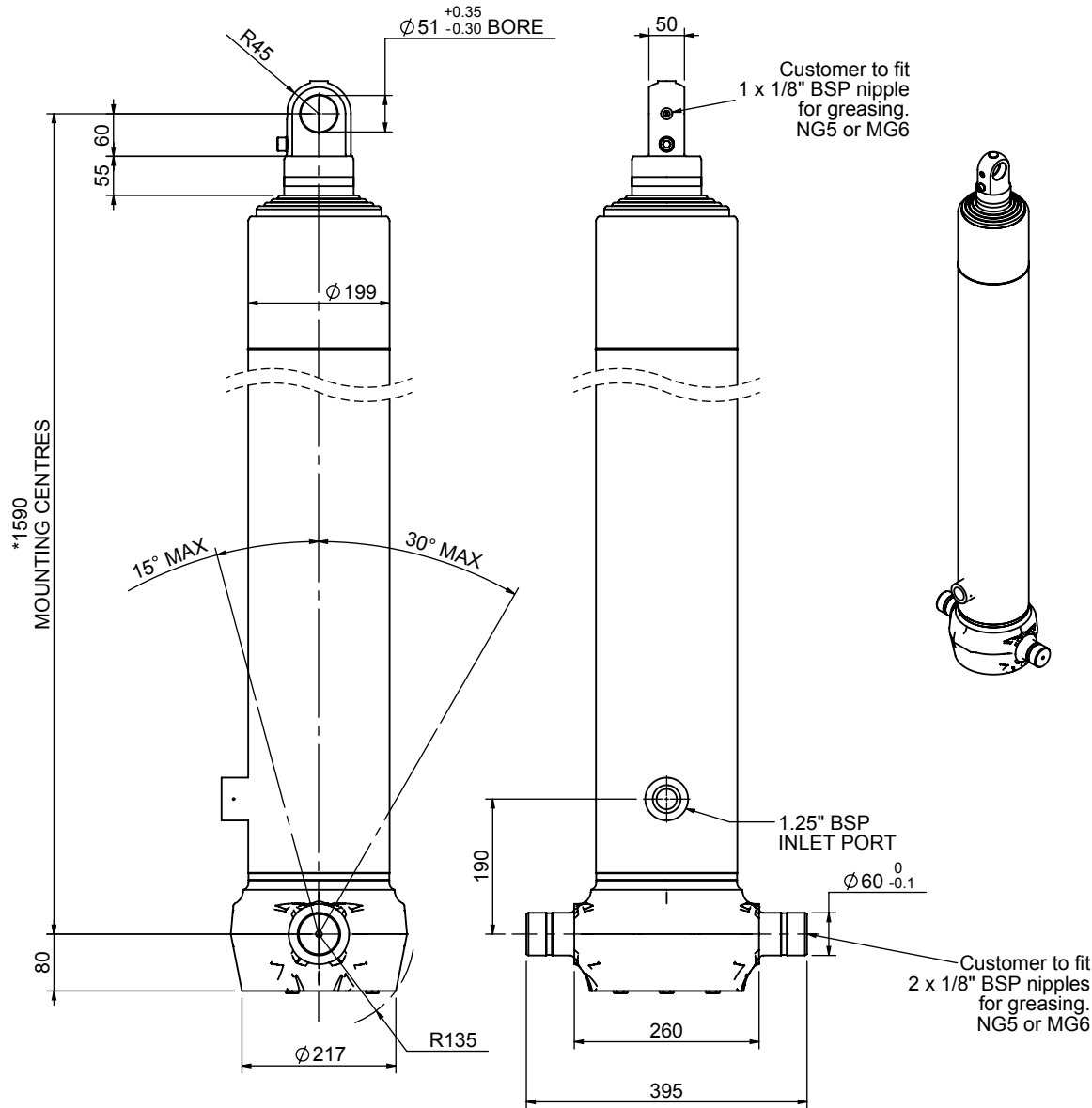


Cylinder 5 stage front end with plain eye

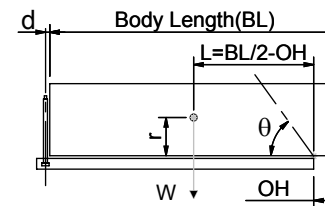


*Includes 9mm Pull Out.
Last Stage Chrome Plated

CS170E56483B19A03

SPECIFICATION		TIPPING CAPACITY : 25-35 TONNES***		
Stage	Diameter	Length	Stroke	Swept Volume
-	-	-	-	-
0	198.9	1525	-	-
1	176	1490	1267	31
2	155	1490	1287	24
3	136	1490	1297	19
4	117	1490	1312	14
5	98	1540	1317	10
Total (+5/-10)			6480	98
Final stroke reduced by	0	Priming Volume		20
Cylinder Mass (Kg)	224	Total Volume (Litres)		118
Maximum Pressure (Bar)	190	Max. first stage thrust		265 KN

***TIPPING CAPACITY AT WORKING PRESSURE



BODY LENGTH (BL)						OH
8000		8500		9000		
28	50°	26	46°	25	44°	150
31	52°	29	48°	27	45°	450
35	54°	32	50°	29	47°	750

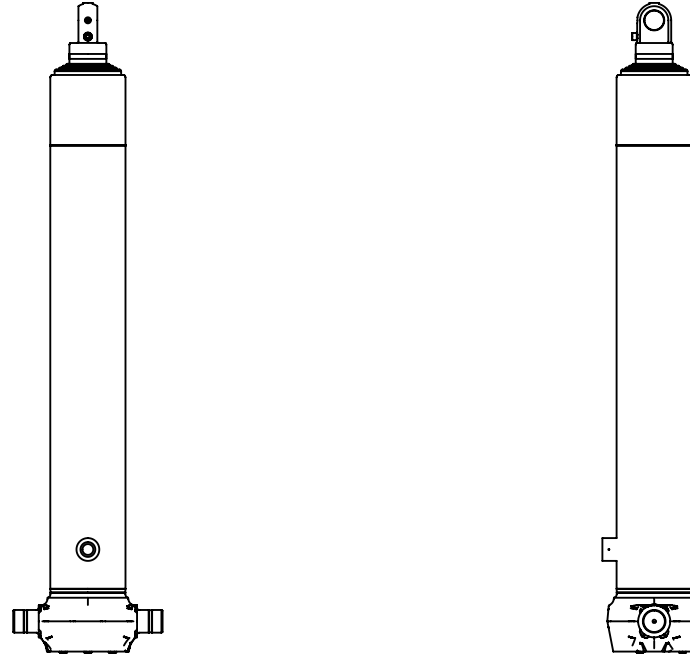
d = 0; r = 900; Working Pressure 120 bar

For guidance only;

Higher working pressures and tipping capacities may be possible.
To check your application email - applications@edbro.co.uk

NOTES

- This cylinder is for lifting purposes only and side load conditions should be avoided
- Cylinder is painted in primer paint to RAL5013
- Refer to www.edbro.com for:-
 - Bracket details
 - Installation instructions that must be observed
 - Correct oil selection
 - An explanation of tipping capacity



CS170E56483B19A03