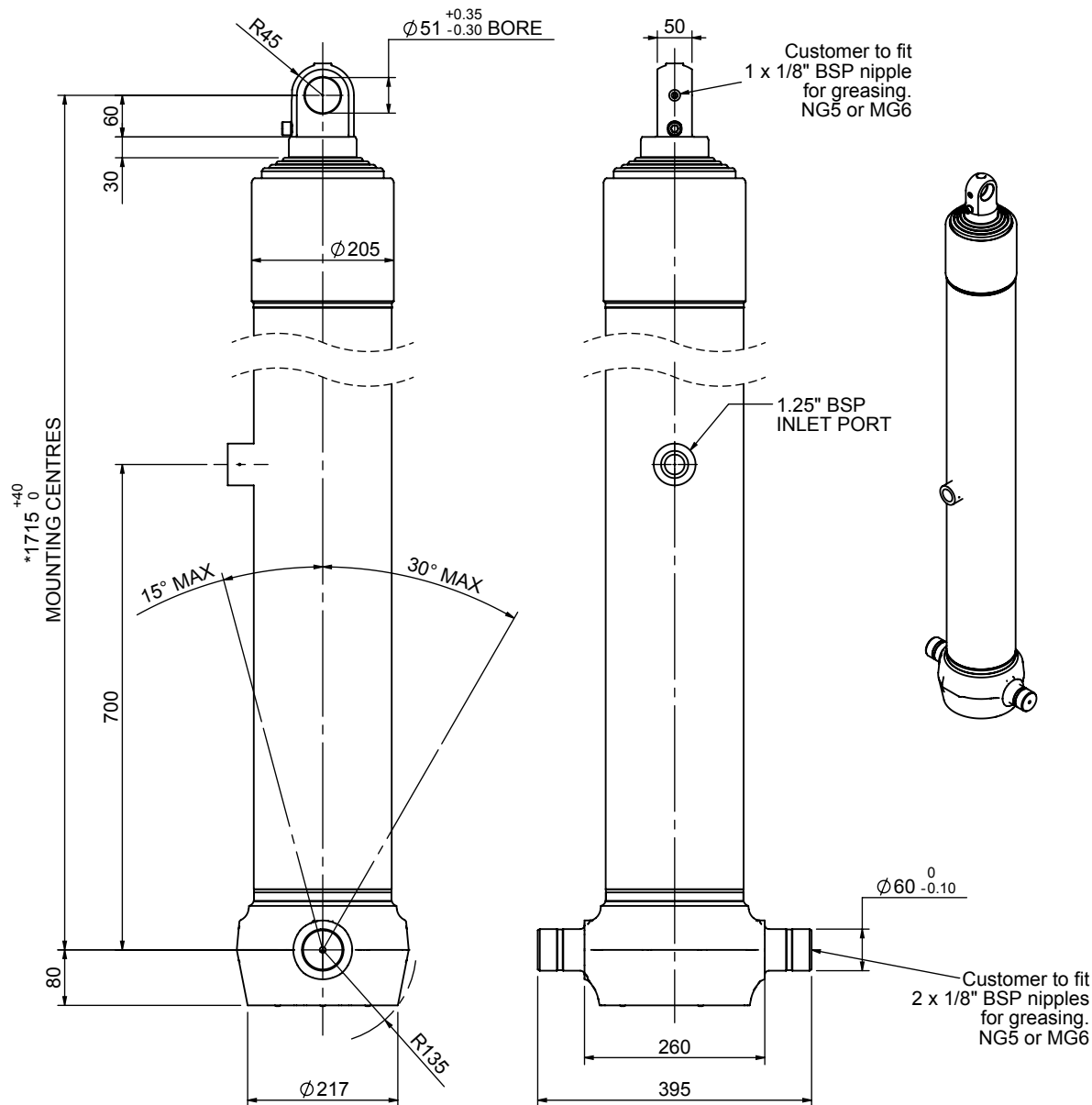


Cylinder 5 stage front end with plain eye

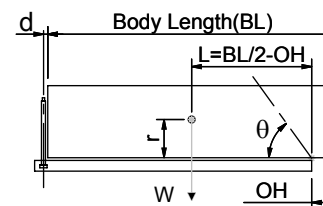


*Includes 9mm Pull Out.
Last Stage Chrome Plated

CS170E56833B70J01

SPECIFICATION		TIPPING CAPACITY : 26-35 TONNES***		
Stage	Diameter	Length	Stroke	Swept Volume
-	-	-	-	-
0	199	1675	-	-
1	176	1640	1417	34
2	155	1640	1437	27
3	136	1640	1447	21
4	117	1640	1462	16
5	98	1665	1067	8
Total (+5/-10)			6830	106
Final stroke reduced by	400	Priming Volume		23
Cylinder Mass (Kg)	244	Total Volume (Litres)		129
Maximum Pressure (Bar)	190	Max. first stage thrust		265 KN

***TIPPING CAPACITY AT WORKING PRESSURE



BODY LENGTH (BL)						OH
8500		9000		9500		
29	49°	27	46°	26	43°	150
31	51°	29	48°	27	45°	450
35	54°	32	50°	30	47°	750

d = 0; r = 900; Working Pressure 120 bar

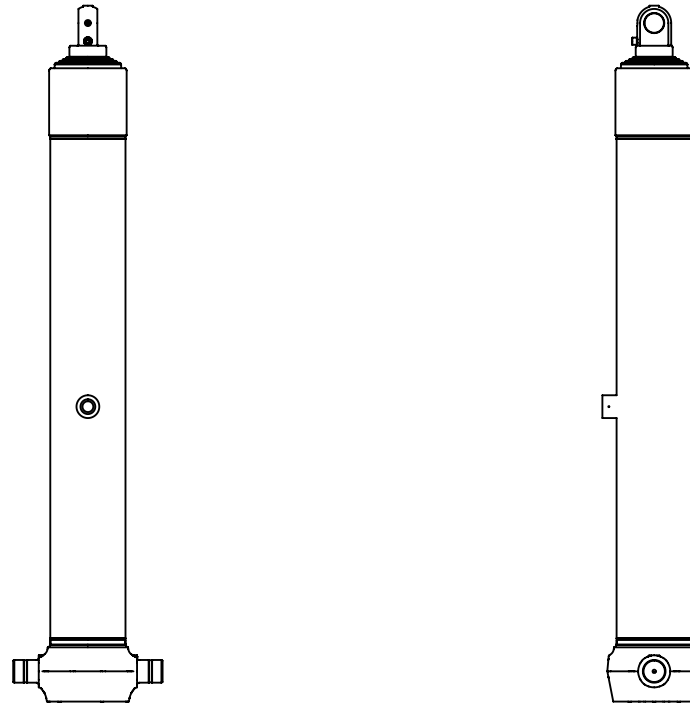
For guidance only;

Higher working pressures and tipping capacities may be possible.

To check your application email - applications@edbro.co.uk

NOTES

1. This cylinder is for lifting purposes only and side load conditions should be avoided
2. Cylinder is painted in primer paint to RAL5013
3. Refer to www.edbro.com for:-
 - Bracket details
 - Installation instructions that must be observed
 - Correct oil selection
 - An explanation of tipping capacity



CS170E56833B70J01