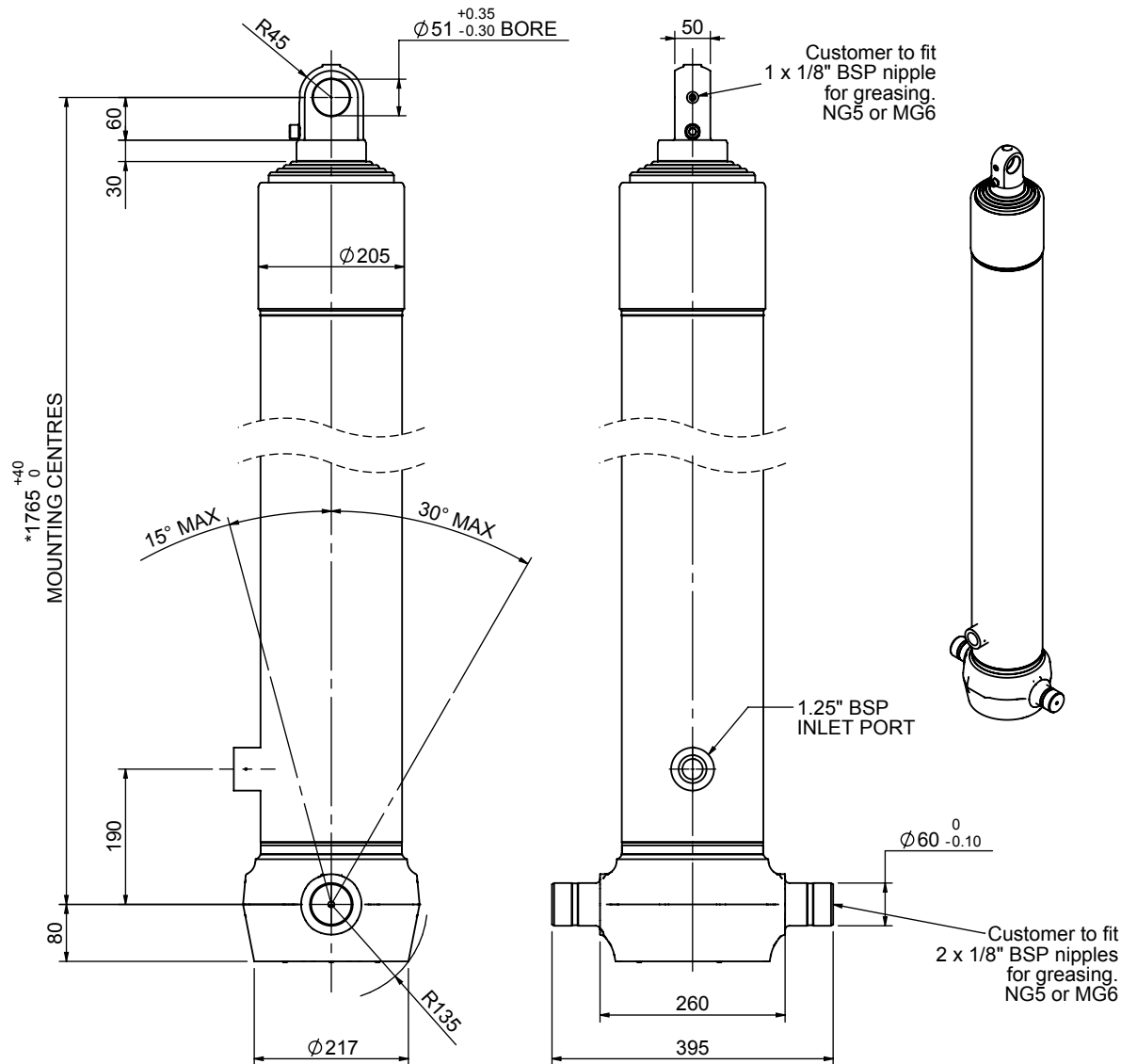


# Cylinder 5 stage front end with plain eye

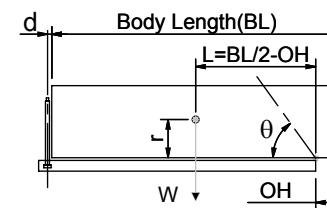


\*Includes 9mm Pull Out.  
Last Stage Chrome Plated

## CS170E57033B19K02

SPECIFICATION		TIPPING CAPACITY : 27-35 TONNES***		
Stage	Diameter	Length	Stroke	Swept Volume
-	-	-	-	-
0	199	1725	-	-
1	176	1690	1467	36
2	155	1690	1487	28
3	136	1690	1497	22
4	117	1690	1512	16
5	98	1715	1067	8
Total (+5/-10)			7030	110
Final stroke reduced by	450	Priming Volume		23
Cylinder Mass (Kg)	251	Total Volume (Litres)		133
Maximum Pressure (Bar)	190	Max. first stage thrust		265 KN

### \*\*\*TIPPING CAPACITY AT WORKING PRESSURE



BODY LENGTH (BL)						OH
8750		9250		9750		
28	49°	27	46°			150
31	51°	29	48°	27	45°	450
35	53°	32	50°	30	47°	750

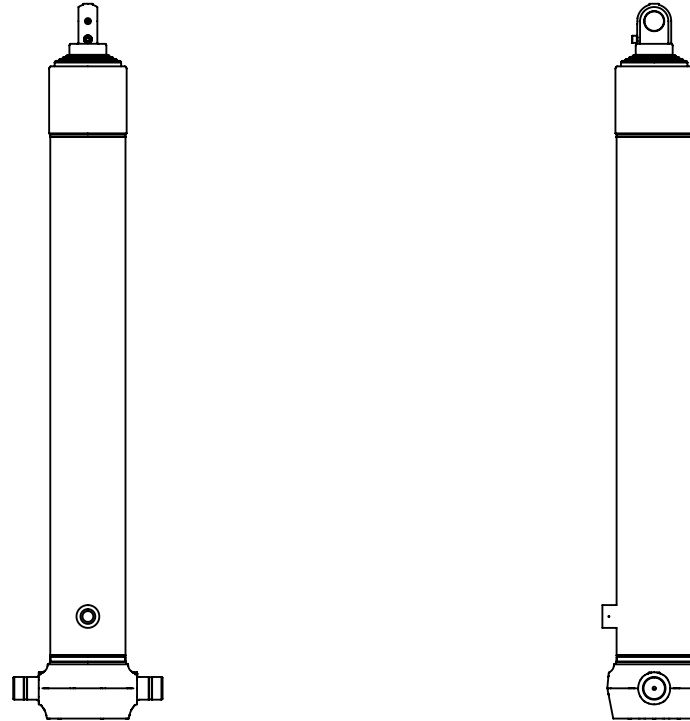
d = 0; r = 900; Working Pressure 120 bar

#### For guidance only;

Higher working pressures and tipping capacities may be possible.  
To check your application email - [applications@edbro.co.uk](mailto:applications@edbro.co.uk)

#### NOTES

- This cylinder is for lifting purposes only and side load conditions should be avoided
- Cylinder is painted in primer paint to RAL5013
- Refer to [www.edbro.com](http://www.edbro.com) for:-
  - Bracket details
  - Installation instructions that must be observed
  - Correct oil selection
  - An explanation of tipping capacity



CS170E57033B19K02