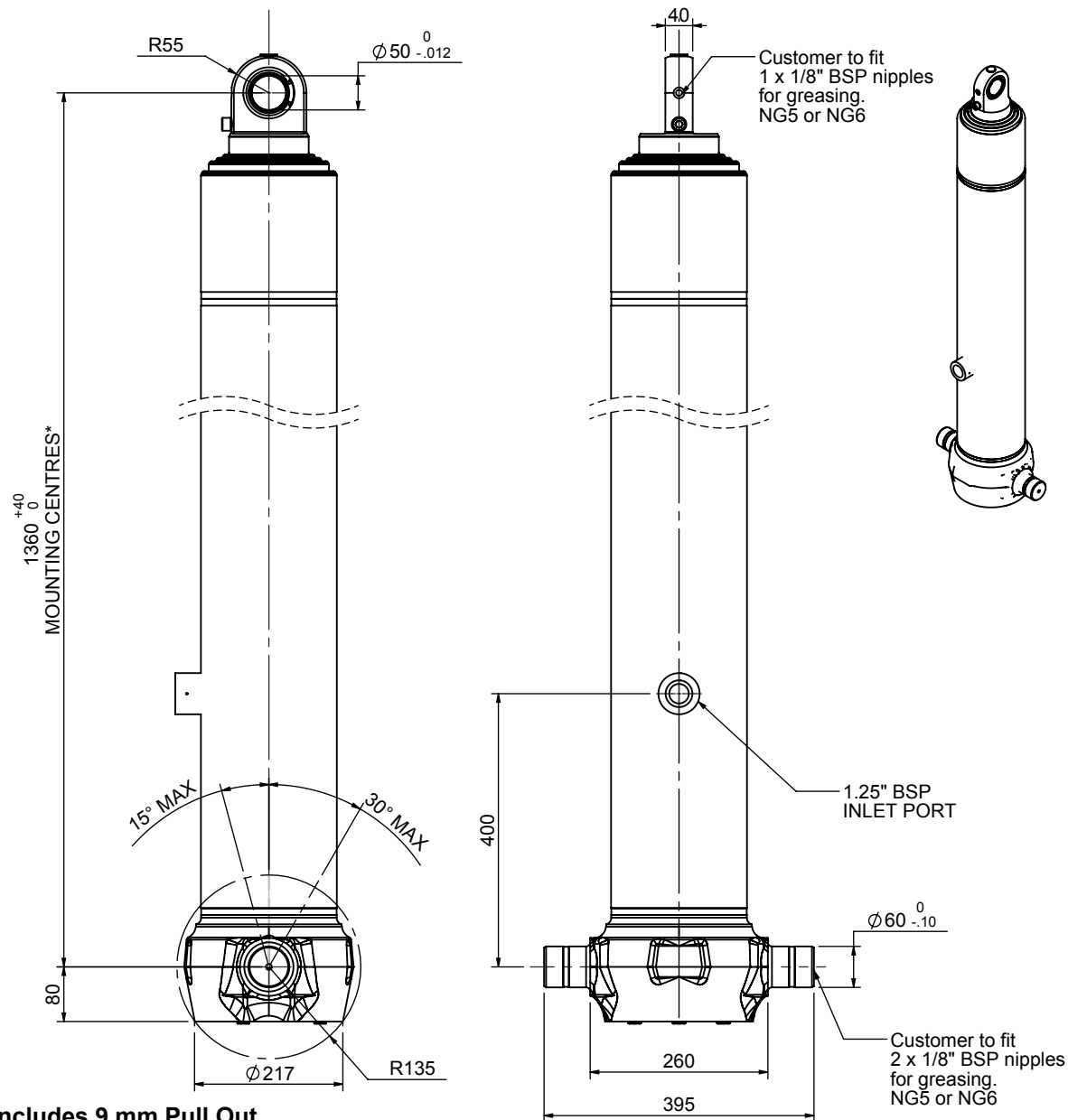


Cylinder 4 stage front end with spherical eye

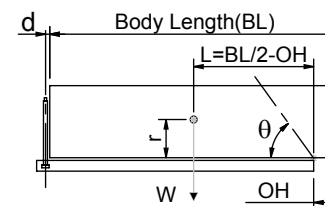


*Includes 9 mm Pull Out.
Last Stage Chrome Plated

CS170S44366B40A02

SPECIFICATION		TIPPING CAPACITY : 42 - 65 TONNES***		
Stage	Diameter	Length	Stroke	Swept Volume
-	-	-	-	-
-	-	-	-	-
0	199	1325	-	-
1	176	1290	1070	26
2	155	1290	1087	21
3	136	1290	1097	16
4	117	1315	1112	12
Total (+5/-10)			4366	75
Final stroke reduced by	0	Priming Volume		20
Cylinder Mass (Kg)	184	Total Volume (Litres)		95
Maximum Pressure (Bar)	190	Max. first stage thrust		265 KN

***TIPPING CAPACITY AT WORKING PRESSURE



BODY LENGTH (BL)						OH
5750	6000	6250				
45	47°	43	45°	42	43°	150
53	50°	50	47°	47	45°	450
65	53°	59	50°	55	48°	750

d = 0; r = 900; Working Pressure 135 bar

For guidance only;

Higher working pressures and tipping capacities may be possible.

To check your application email - applications@edbro.co.uk

NOTES

1. This cylinder is for lifting purposes only and side load conditions should be avoided
2. Cylinder is painted in primer paint to RAL5013
3. Refer to www.edbro.com for;-
 - Bracket details
 - Installation instructions that must be observed
 - Correct oil selection
 - An explanation of tipping capacity