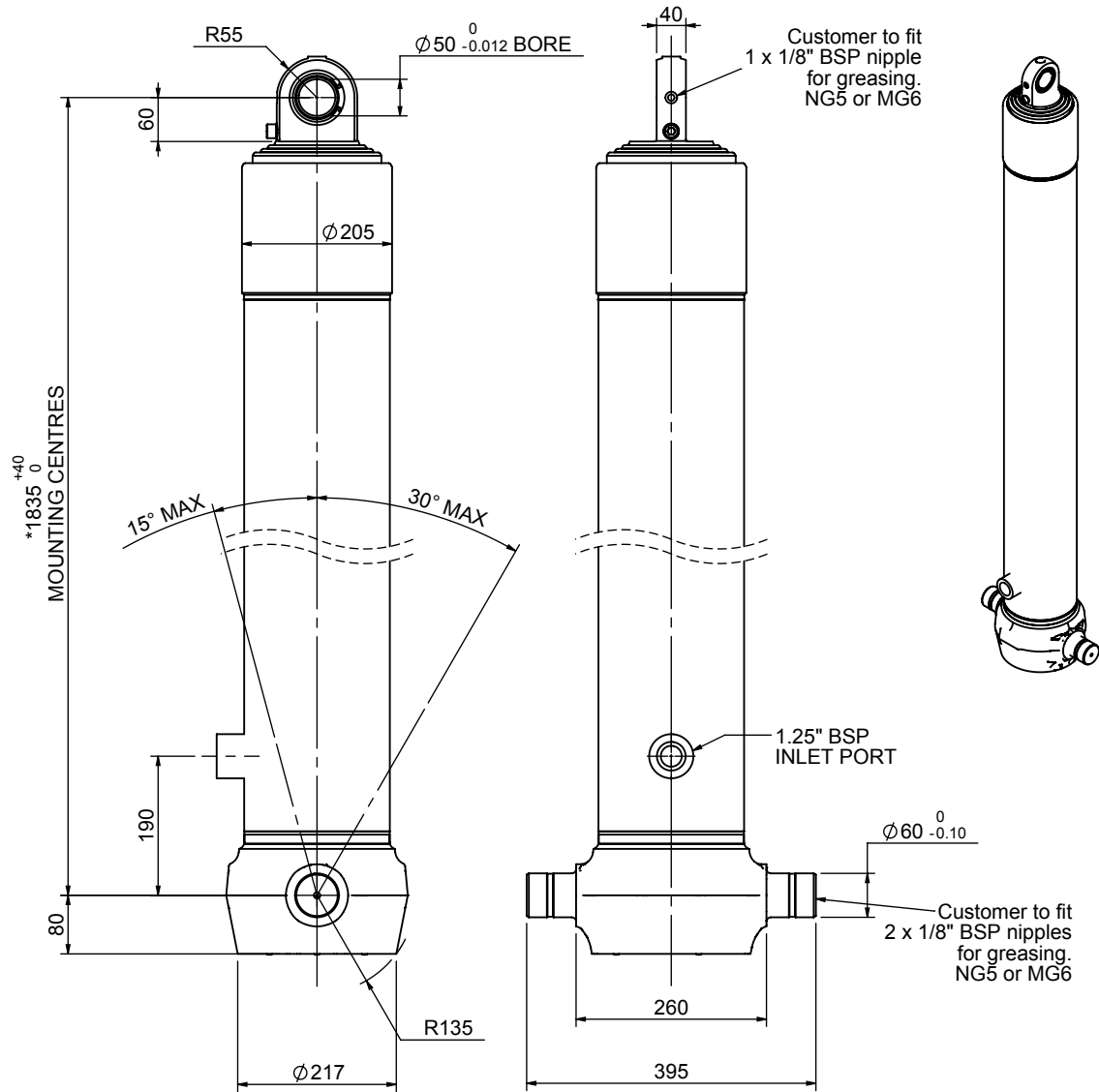


# Cylinder 4 stage front end with spherical eye

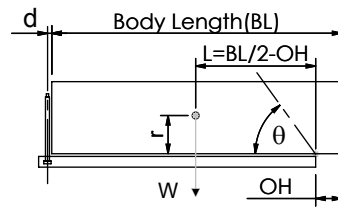
CS170S46366B19A01



**SPECIFICATION** **TIPPING CAPACITY : 34-46 TONNES\*\*\***

Stage	Diameter	Length	Stroke	Swept Volume
-	-	-	-	-
-	-	-	-	-
0	199	1825	-	-
1	176	1790	1567	38
2	155	1790	1587	30
3	136	1790	1597	23
4	117	1790	1612	17
Total (+5/-10)			6363	
Final stroke reduced by	0	Priming Volume		25
Cylinder Mass (Kg)	243	Total Volume (Litres)		25
Maximum Pressure (Bar)	190	Max. first stage thrust		265 KN

**\*\*\*TIPPING CAPACITY AT WORKING PRESSURE**



BODY LENGTH (BL)					OH	
8000	8500		9000			
37	49°	36	46°	34	43°	150
41	51°	38	48°	37	44°	450
46	53°	42	50°	39	46°	750

$d = 0$ ;  $r = 900$ ; Working Pressure 120 bar  
 For guidance only;  
 Higher working pressures and tipping capacities may be possible.  
 To check your application email - [applications@edbro.co.uk](mailto:applications@edbro.co.uk)

**NOTES**

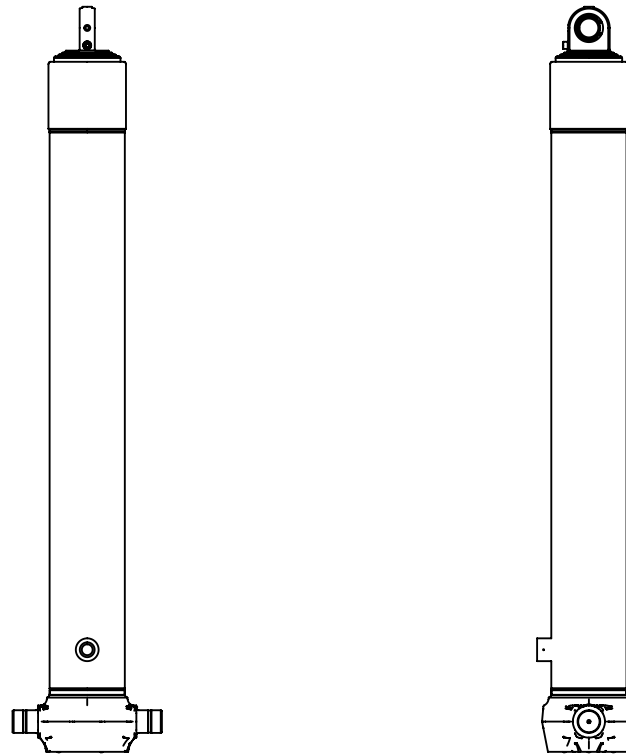
- This cylinder is for lifting purposes only and side load conditions should be avoided
- Cylinder is painted in primer paint to RAL5013
- Refer to [www.edbro.com](http://www.edbro.com) for:-
  - Bracket details
  - Installation instructions that must be observed
  - Correct oil selection
  - An explanation of tipping capacity

\*Includes 9mm Pull Out. Last Stage Chrome Plated



**Edbro plc**  
 Nelson Street, Bolton, England, BL3 2JJ  
 Tel +44 (0) 1204 528888 Fax +44 (0) 1204 531957  
 Email: [postmaster@edbro.com](mailto:postmaster@edbro.com) Web: [www.edbro.com](http://www.edbro.com)

Technical Specifications are subject to change without notice  
 Date Created/Updated: 15 August 2012  
 Refer [www.edbro.com](http://www.edbro.com) to confirm latest specification  
 All dimensions are in 'mm', unless otherwise stated



CS170S46366B19A01