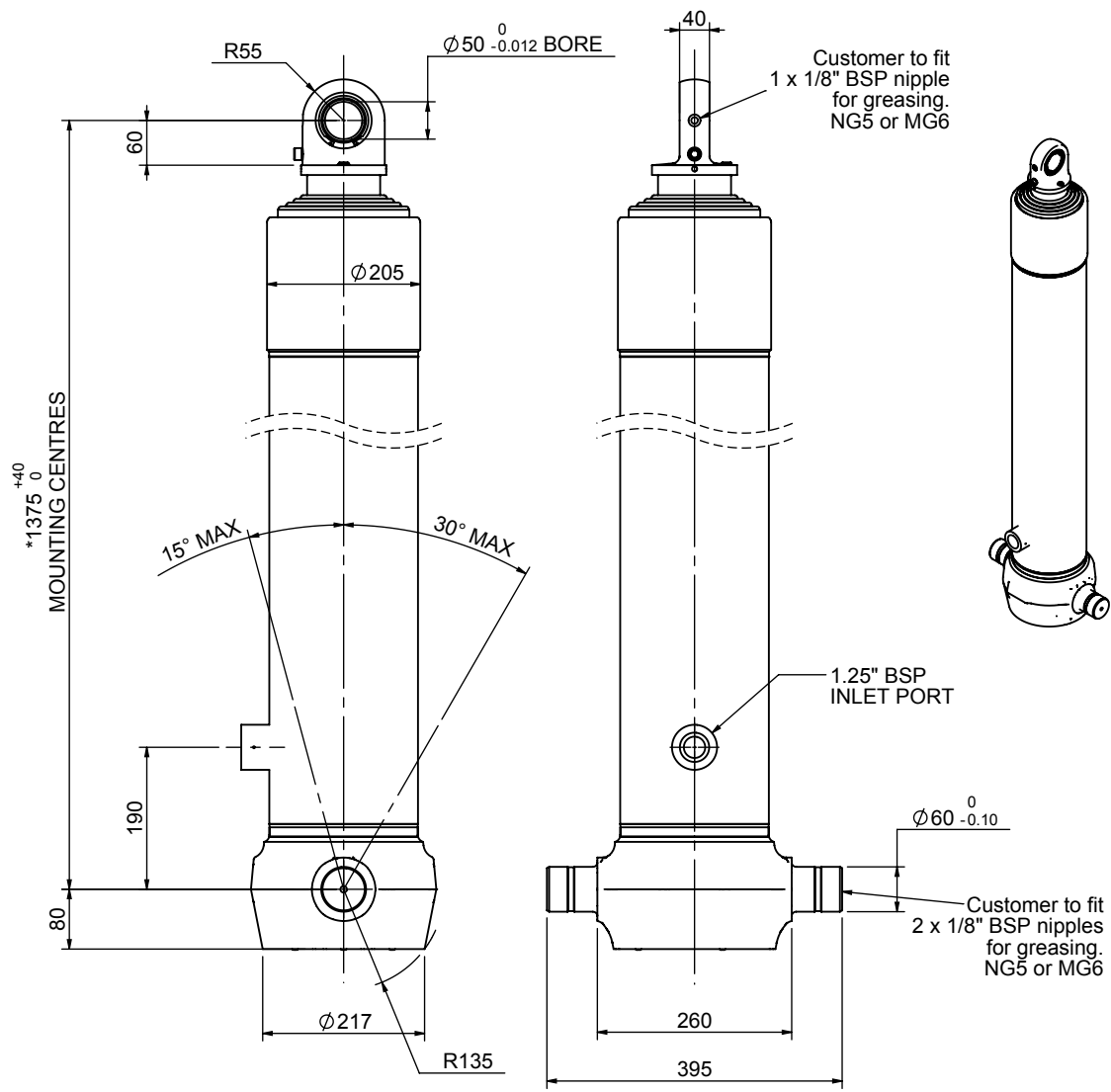


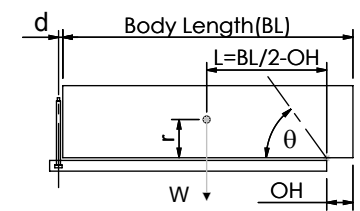
Cylinder 5 stage front end with spherical eye



CS170S55483B19A02

SPECIFICATION		TIPPING CAPACITY : 37-54 TONNES***		
Stage	Diameter	Length	Stroke	Swept Volume
-	-	-	-	-
0	199	1325	-	-
1	176	1290	1067	26
2	155	1290	1087	21
3	136	1290	1097	16
4	117	1290	1112	12
5	98	1315	1117	8
Total (+5/-10)			5480	83
Final stroke reduced by	0	Priming Volume	17	
Cylinder Mass (Kg)	204	Total Volume (Litres)	100	
Maximum Pressure (Bar)	190	Max. first stage thrust	265 KN	

*****TIPPING CAPACITY AT WORKING PRESSURE**



BODY LENGTH (BL)						OH
7000	7500	8000				
41	48°	39	44°	37	41°	150
47	51°	43	47°	40	43°	450
54	53°	48	49°	44	45°	750

d = 0; r = 900; Working Pressure 175 bar

For guidance only;
Higher working pressures and tipping capacities may be possible.
To check your application email - applications@edbro.co.uk

NOTES

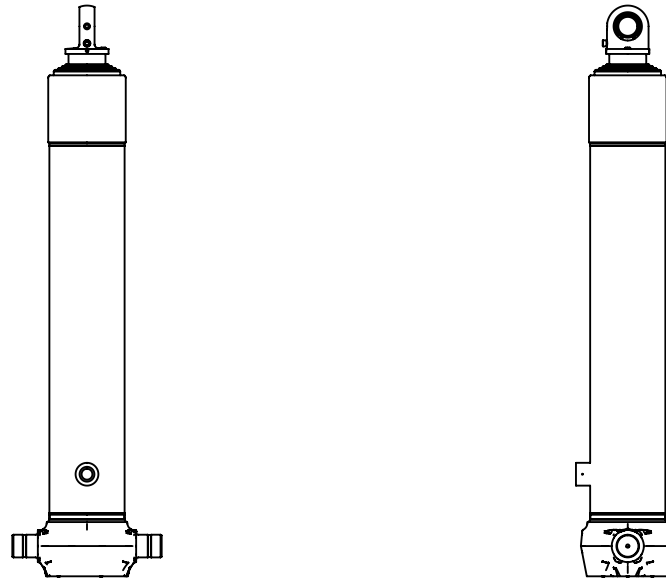
1. This cylinder is for lifting purposes only and side load conditions should be avoided
2. Cylinder is painted in primer paint to RAL5013
3. Refer to www.edbro.com for:-
 - Bracket details
 - Installation instructions that must be observed
 - Correct oil selection
 - An explanation of tipping capacity

*Includes 9mm Pull Out.
Last Stage Chrome Plated



Edbro plc
Nelson Street, Bolton, England, BL3 2JJ
Tel +44 (0) 1204 528888 Fax +44 (0) 1204 531957
Email: postmaster@edbro.com Web: www.edbro.com

Technical Specifications are subject to change without notice
Date Created/Updated: 15 August 2012
Refer www.edbro.com to confirm latest specification
All dimensions are in 'mm', unless otherwise stated



CS170S55483B19A02