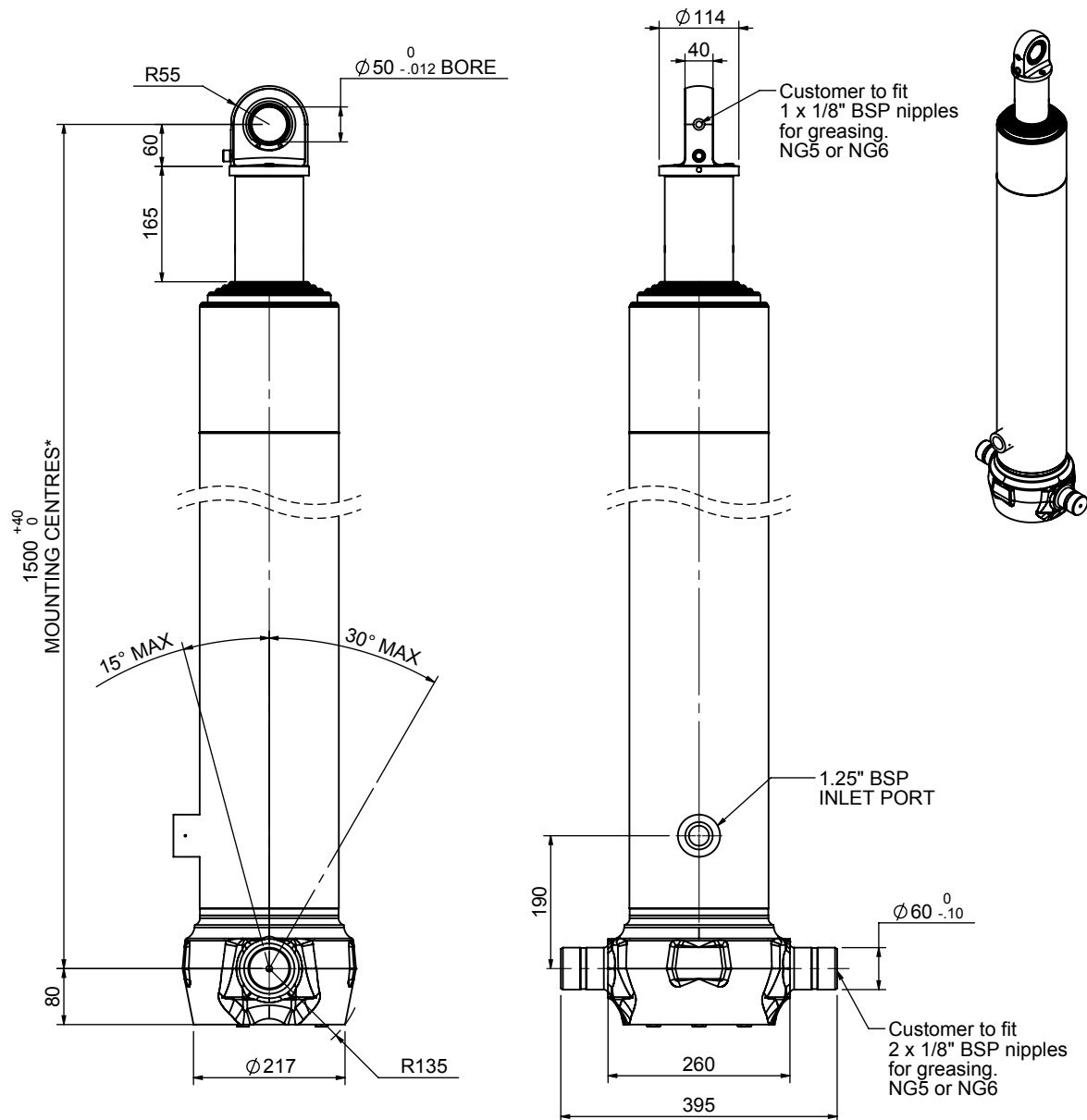


Cylinder 5 stage front end with spherical eye

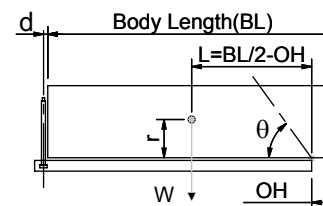


*Includes 9 mm Pull Out.
Last Stage Chrome Plated

CS170S55483B19A07

SPECIFICATION		TIPPING CAPACITY : 36-51 TONNES***		
Stage	Diameter	Length	Stroke	Swept Volume
-	-	-	-	-
0	199	1325	-	-
1	176	1290	1067	26
2	155	1290	1087	21
3	136	1290	1097	16
4	117	1290	1112	12
5	98	1290	1117	8
Total (+5/-10)			5480	83
Final stroke reduced by	0	Priming Volume		17
Cylinder Mass (Kg)	203	Total Volume (Litres)		100
Maximum Pressure (Bar)	190	Max. first stage thrust		265 KN

***TIPPING CAPACITY AT WORKING PRESSURE



BODY LENGTH (BL)						OH
7000		7500		8000		
39	48°	36	45°			150
44	51°	40	47°	37	43°	450
51	53°	45	49°	41	45°	750

d = 0; r = 900; Working Pressure 165 bar

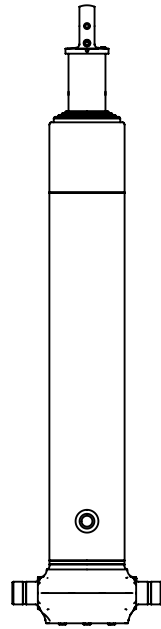
For guidance only;

Higher working pressures and tipping capacities may be possible.

To check your application email - applications@edbro.co.uk

NOTES

1. This cylinder is for lifting purposes only and side load conditions should be avoided
2. Cylinder is painted in primer paint to RAL5013
3. Refer to www.edbro.com for:-
 - Bracket details
 - Installation instructions that must be observed
 - Correct oil selection
 - An explanation of tipping capacity



CS170S55483B19A07