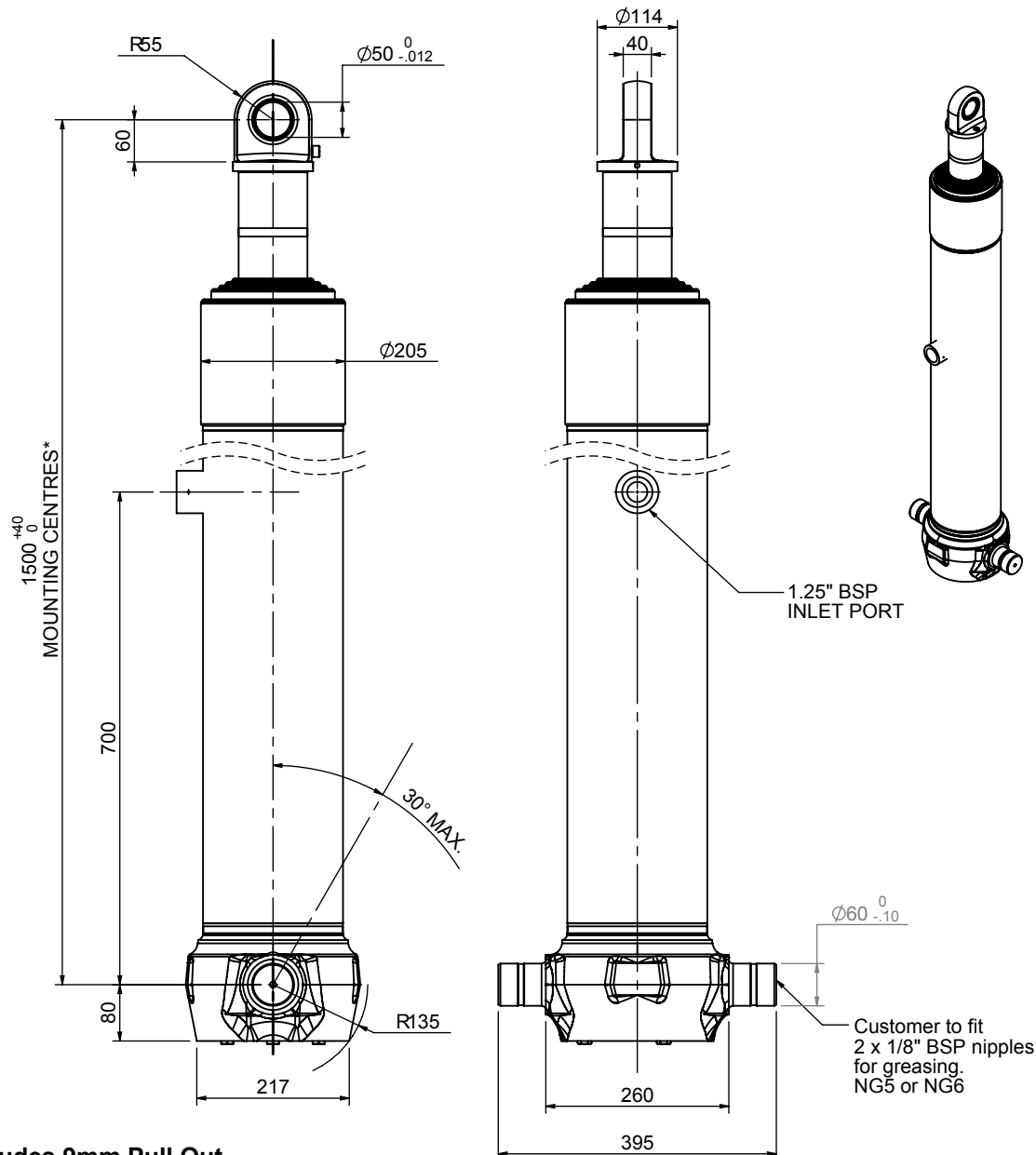


# Cylinder 5 stage front end with spherical eye

CS170S55483B70A07C



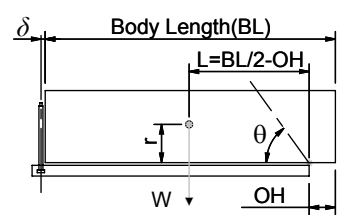
## SPECIFICATION

RATED CAPACITY : 34-51 TONNES\*\*\*

Stage	Diameter	Length	Stroke	Swept Volume
-	-	-	-	-
0	199	1325	-	-
1	176	1290	1067	26
2	155	1290	1087	21
3	136	1290	1097	16
4	117	1290	1112	12
5	98	1440	1117	8
Final stroke reduced by	0	Total (+5/-10)	5480	83
Cylinder Mass (Kg)	209.45	Priming Volume	17	
Rated Pressure (Bar)	165	Total Volume (Litres)	100	
Maximum Pressure (Bar)	175	Max. first stage thrust	260 KN	

## \*\*\*TIPPING CAPACITY AT RATED PRESSURE

d = 0 ; r = 900



BODY LENGTH (BL)						OH
7000		7500		8000		
39	48°	36	45°	34	41°	150
44	51°	40	47°	37	43°	450
51	53°	45	49°	41	45°	750

— Tipping angle (θ)  
— Body + payload mass, W (tonne)

**For guidance only;**  
Higher Rated Pressures may be possible. To check your application, email Edbro plc at <applications@edbro.co.uk>

## NOTES

- If hydraulic pressure is used to limit overloading, the system relief valve must be set to the Rated Pressure unless agreed otherwise by Edbro
- The system relief valve can be set to Maximum Pressure if the load is limited by other means. See RATINGS page for advice
- This cylinder is for lifting purposes only and sload conditions must be avoided
- Cylinder is painted in primer paint to RAL5013
- See bracket options page BRKT01, BRKT02
- See installation instructions INSTALL01
- Use oil according to specification OIL01

\*Includes 9mm Pull Out  
All Stages Chrome Plated



**Edbro plc**  
Nelson Street, Bolton, Lancashire BL3 2JJ UK  
Tel +44 (0) 1204 528888 Fax +44 (0) 1204 531957  
Email: postmaster@edbro.com Web: www.edbro.com

Technical Specifications are subject to change without notice  
Date Created/Updated: 26 August 2009 09:40:29  
Refer www.edbro.com to confirm latest specification  
All dimensions are in 'mm', unless otherwise stated