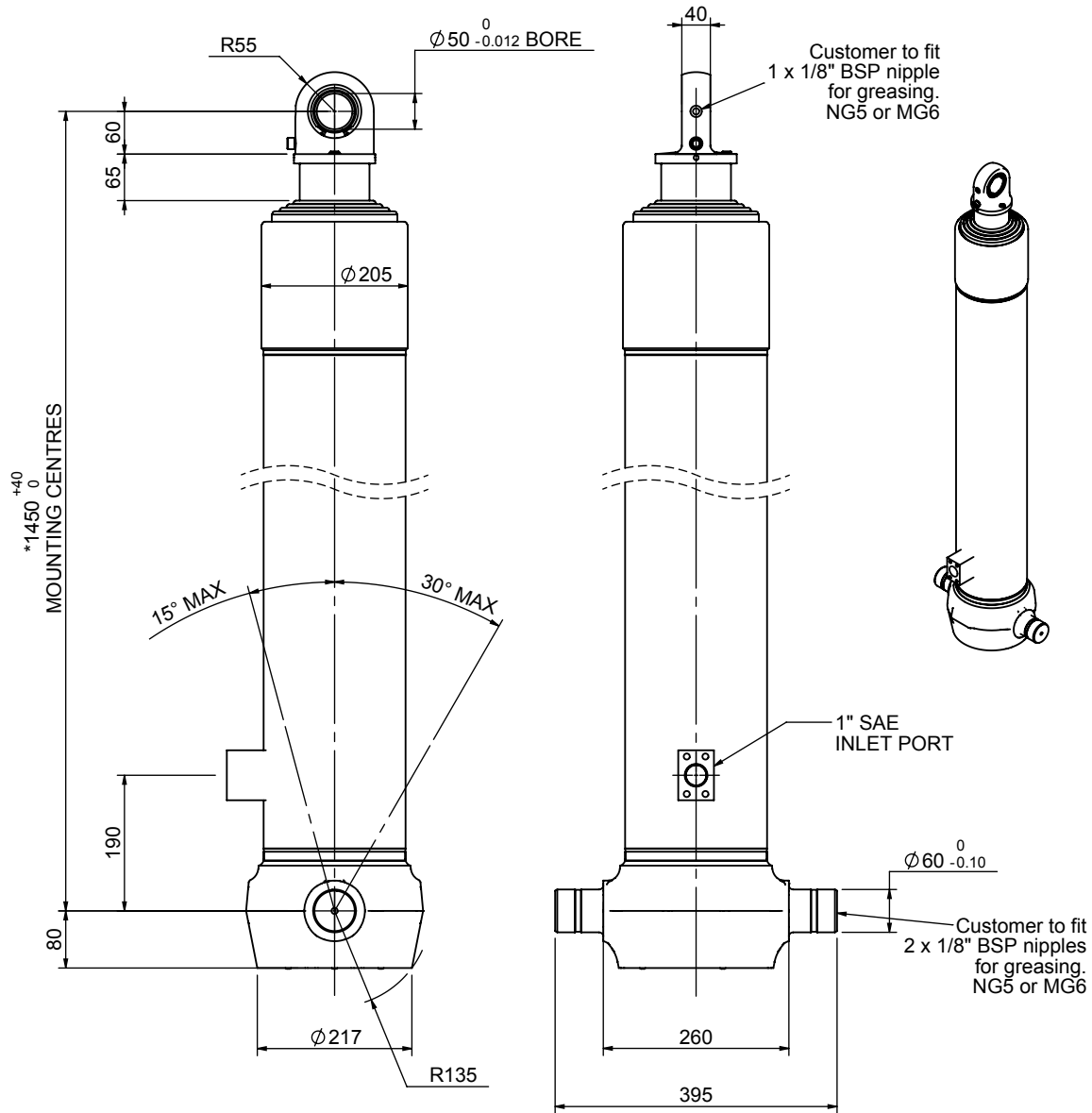


Cylinder 5 stage front end with spherical eye

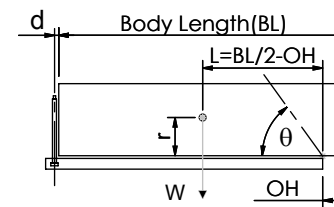
CS170S55633S19C03C



SPECIFICATION TIPPING CAPACITY : 35-50 TONNES***

Stage	Diameter	Length	Stroke	Swept Volume
-	-	-	-	-
0	199	1375	-	-
1	176	1340	1117	27
2	155	1340	1137	21
3	136	1340	1147	17
4	117	1340	1162	12
5	98	1390	1067	8
Total (+5/-10)			5630	85
Final stroke reduced by	100	Priming Volume	18	
Cylinder Mass (Kg)	211	Total Volume (Litres)	103	
Maximum Pressure (Bar)	190	Max. first stage thrust	265 kN	

***TIPPING CAPACITY AT WORKING PRESSURE



BODY LENGTH (BL)						OH
7250		7750		8250		
39	48°	36	44°	35	41°	150
44	50°	40	46°	37	43°	450
50	53°	45	48°	41	45°	750

d = 0; r = 900; Working Pressure 165 bar

For guidance only;

Higher working pressures and tipping capacities may be possible.

To check your application email - applications@edbro.co.uk

NOTES

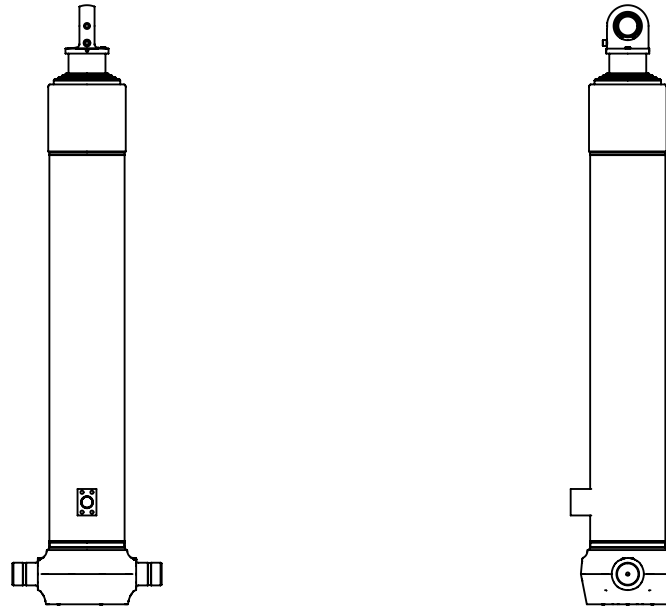
1. This cylinder is for lifting purposes only and side load conditions should be avoided
2. Cylinder is painted in primer paint to RAL5013
3. Refer to www.edbro.com for:-
 - Bracket details
 - Installation instructions that must be observed
 - Correct oil selection
 - An explanation of tipping capacity

*Includes 9mm Pull Out.
All Stages Chrome Plated

Edbro
SETTING THE INDUSTRY STANDARD

Edbro plc
Nelson Street, Bolton, England, BL3 2JJ
Tel +44 (0) 1204 528888 Fax +44 (0) 1204 531957
Email: postmaster@edbro.com Web: www.edbro.com

Technical Specifications are subject to change without notice
Date Created/Updated: 25 February 2013
Refer www.edbro.com to confirm latest specification
All dimensions are in 'mm', unless otherwise stated



CS170S55633S19C03C