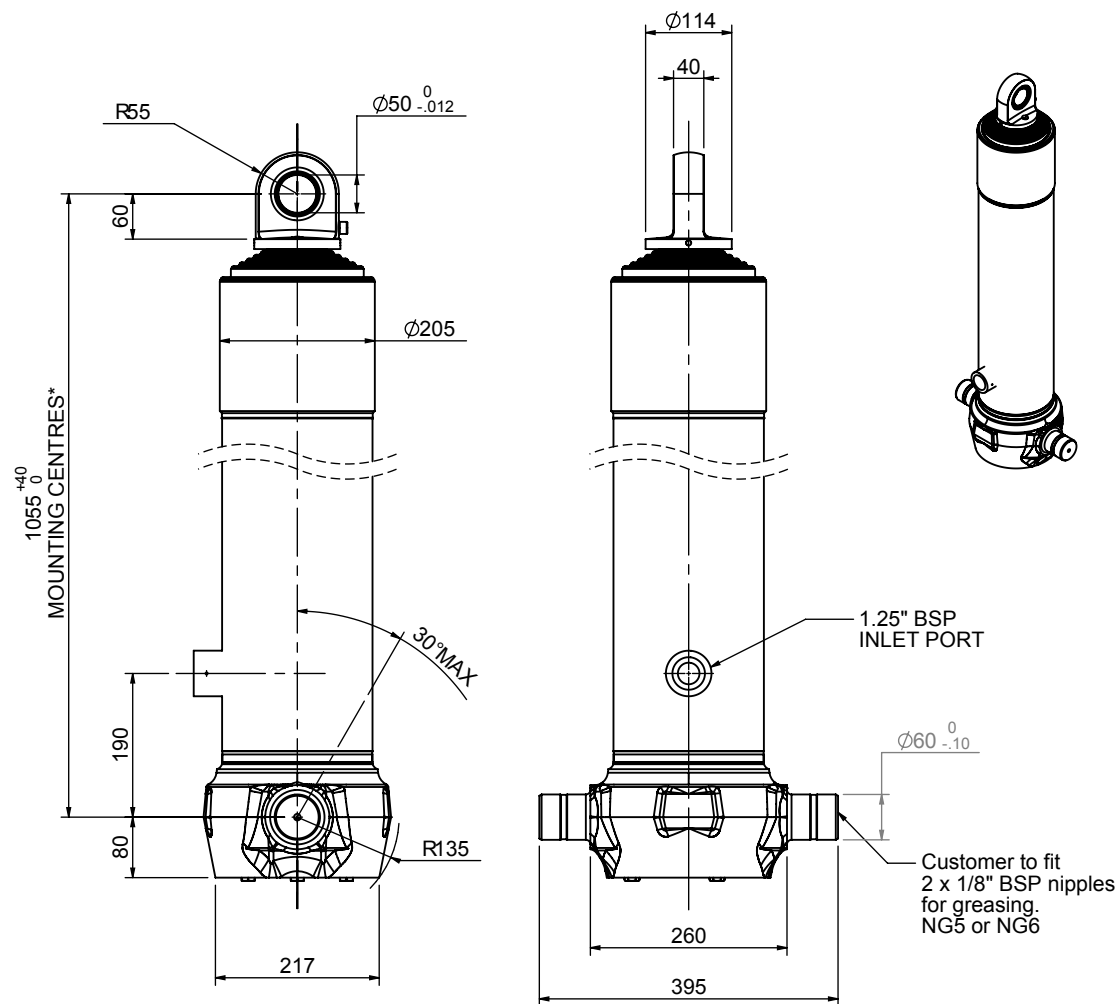


Cylinder 6 stage front end with spherical eye

CS170S64805B19A01

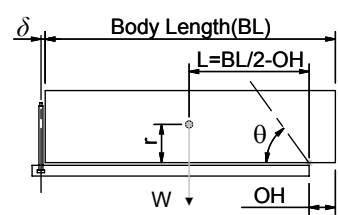


SPECIFICATION RATED CAPACITY : 25-41 TONNES***

Stage	Diameter	Length	Stroke	Swept Volume
0	199	1025	-	-
1	176	990	767	19
2	155	990	787	15
3	136	990	797	12
4	117	990	812	9
5	98	990	817	6
6	79	990	822	4
Final stroke reduced by	0	Total (+5/-10)	4802	65
Cylinder Mass (Kg)	177.98	Priming Volume		13
Rated Pressure (Bar)	175	Total Volume (Litres)		78
Maximum Pressure (Bar)	175	Max. first stage thrust		260 KN

***TIPPING CAPACITY AT RATED PRESSURE

d = 0 ; r = 900



BODY LENGTH (BL)					OH	
6250		6750		7250		
29	47°	26	43°	25	40°	150
34	50°	30	46°	27	42°	450
41	53°	35	48°	31	44°	750

— Tipping angle (θ)
— Body + payload mass, W (tonne)

For guidance only;
Higher Rated Pressures may be possible. To check your application, email Edbro plc at <applications@edbro.co.uk>

NOTES

- If hydraulic pressure is used to limit overloading, the system relief valve must be set to the Rated Pressure unless agreed otherwise by Edbro
- The system relief valve can be set to Maximum Pressure if the load is limited by other means. See RATINGS page for advice
- This cylinder is for lifting purposes only and sload conditions must be avoided
- Cylinder is painted in primer paint to RAL5013
- See bracket options page BRKT01, BRKT02
- See installation instructions INSTALL01
- Use oil according to specification OIL01

*Includes 9mm Pull Out Last Stage Chrome Plated



Edbro plc
Nelson Street, Bolton, Lancashire BL3 2JJ UK
Tel +44 (0) 1204 528888 Fax +44 (0) 1204 531957
Email: postmaster@edbro.com Web: www.edbro.com

Technical Specifications are subject to change without notice
Date Created/Updated: 14 August 2009 10:05:53
Refer www.edbro.com to confirm latest specification
All dimensions are in 'mm', unless otherwise stated