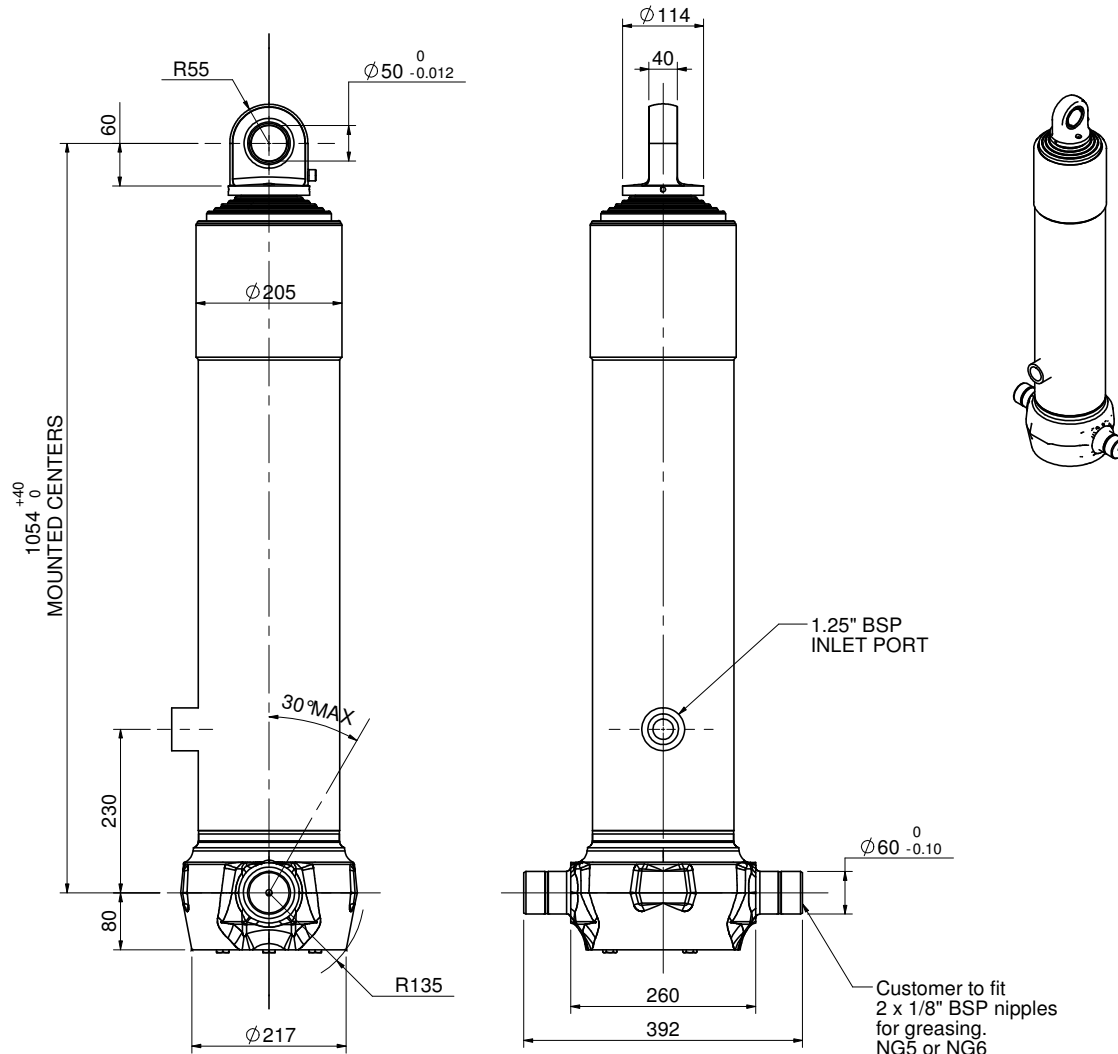


Cylinder 6 stage front end with spherical eye

CS170S64805B23A01



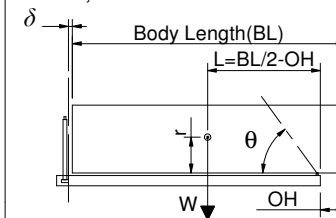
SPECIFICATION

RATED CAPACITY : 25-41 TONNES*

Stage	Diameter	Length	Stroke	Swept Volume
0	198.12	1025		
1	176.00	990	770	18.7
2	154.85	990	787	14.8
3	135.75	990	797	11.5
4	116.65	990	812	8.7
5	97.8	990	817	6.1
6	79.25	990	822	4.1
Final stroke reduced by	0	Total	4805	63.9
Cylinder Mass (Kg)	173	Priming Volume		13.0
Working Pressure (Bar)	175	Total Volume (Litres)		76.9
Maximum Pressure (Bar)	175	Max. first stage thrust		260 KN

*TIPPING CAPACITY AT RATED PRESSURE

$\delta = 0 ; r = 900$



BODY LENGTH (BL)						OH
6250		6750		7250		
29	47°	26	43°	25	40°	150
34	50°	30	46°	27	42°	450
41	53°	35	48°	31	44°	750

For guidance only;

Higher working pressures may be possible. To check your application, email Edbro plc at <applications@edbro.co.uk>

NOTES

- If hydraulic pressure is used to limit overloading, the system relief valve must be set to the Working Pressure unless agreed by Edbro.
- The system relief valve can be set to Maximum Pressure if the load is limited by other means.
- This cylinder is for lifting purposes only and sload conditions must be avoided.
- Cylinder is painted in primer paint to RAL5010.
- See bracket options page 17BRKT01.
- See installation instructions INSTALL01.
- Use oil according to specification OIL01.

This drawing is available on request in PDF (2D), DXF (2D) or Parasolid (3D) via applications@edbro.co.uk

Edbro
SETTING THE INDUSTRY STANDARD

Edbro plc
Nelson Street, Bolton, Lancashire BL3 2JJ UK
Tel +44 (0) 1204 528888 Fax +44 (0) 1204 531957
Email: postmaster@edbro.com Web: www.edbro.com

Technical Specifications are subject to change without notice
Date Created/Updated: 23 January 2009 17:07:09
Refer www.edbro.com to confirm latest specification
All dimensions are in 'mm', unless otherwise stated