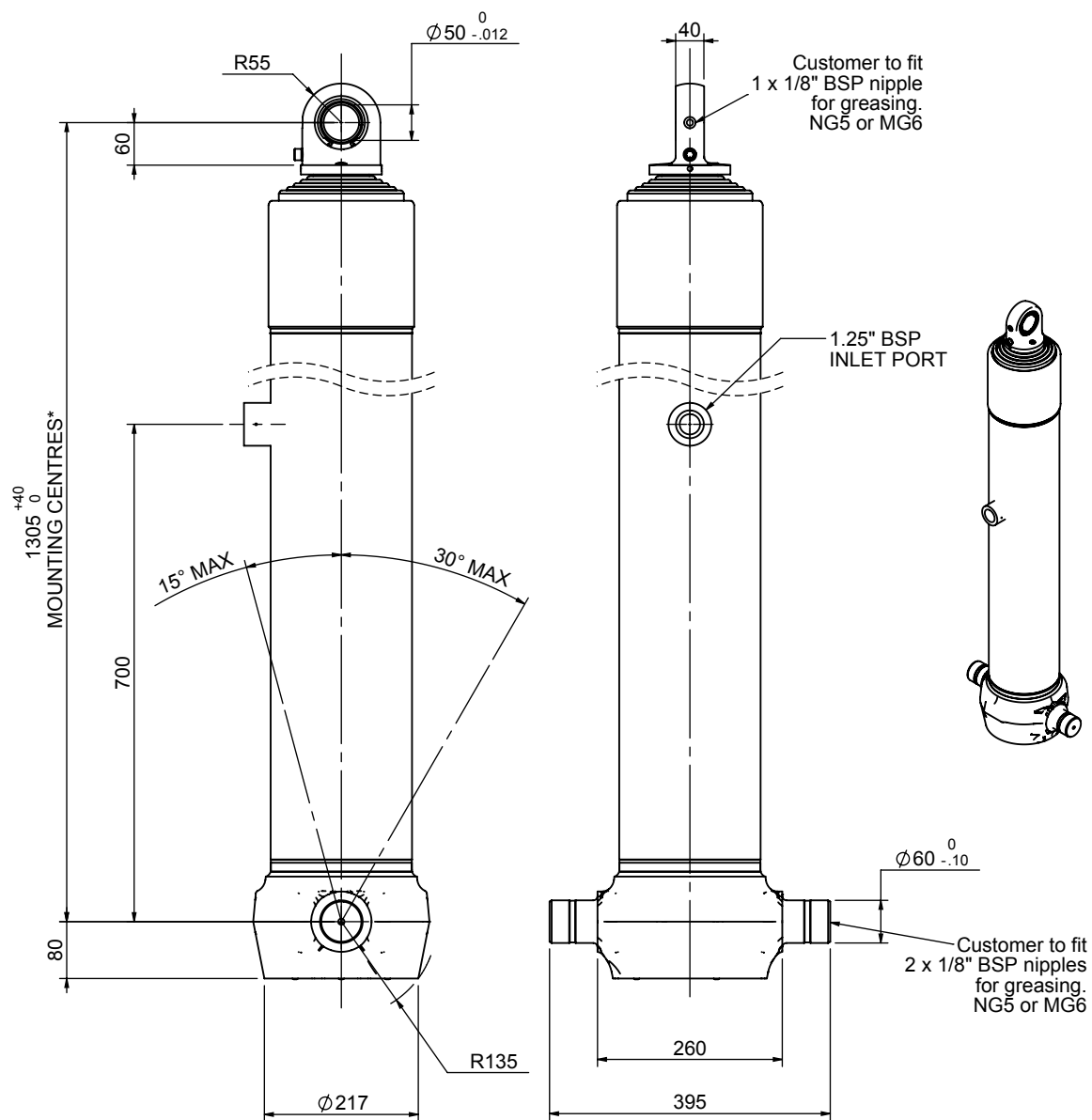


Cylinder 6 stage front end with spherical eye

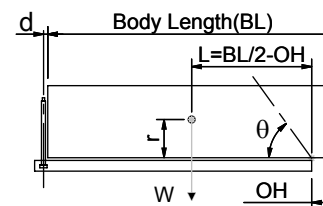


*Includes 9mm Pull Out.
Last Stage Chrome Plated

CS170S65705B70N01

SPECIFICATION		TIPPING CAPACITY : 27-46 TONNES***		
Stage	Diameter	Length	Stroke	Swept Volume
0	199	1275	-	-
1	176	1240	1017	25
2	155	1240	1037	20
3	136	1240	1047	15
4	117	1240	1062	11
5	98	1240	1067	8
6	79	1240	472	2
Total (+5/-10)			5702	81
Final stroke reduced by	600	Priming Volume		17
Cylinder Mass (Kg)	206	Total Volume (Litres)		98
Maximum Pressure (Bar)	190	Max. first stage thrust		265 KN

***TIPPING CAPACITY AT WORKING PRESSURE



BODY LENGTH (BL)						OH
7100		7600		8100		
32	49°	29	46°	27	43°	150
37	52°	32	48°	29	44°	450
46	55°	38	50°	33	46°	750

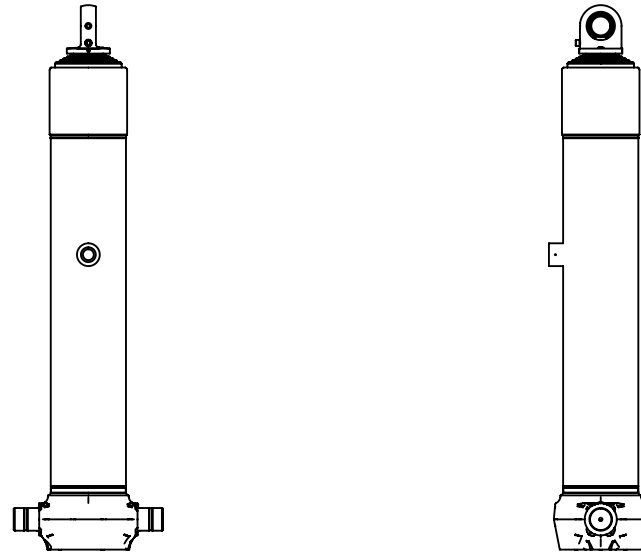
d = 0; r = 900; Working Pressure 175 bar

For guidance only;

Higher working pressures and tipping capacities may be possible.
To check your application email - applications@edbro.co.uk

NOTES

1. This cylinder is for lifting purposes only and side load conditions should be avoided
2. Cylinder is painted in primer paint to RAL5013
3. Refer to www.edbro.com for:-
 - Bracket details
 - Installation instructions that must be observed
 - Correct oil selection
 - An explanation of tipping capacity



CS170S65705B70N01