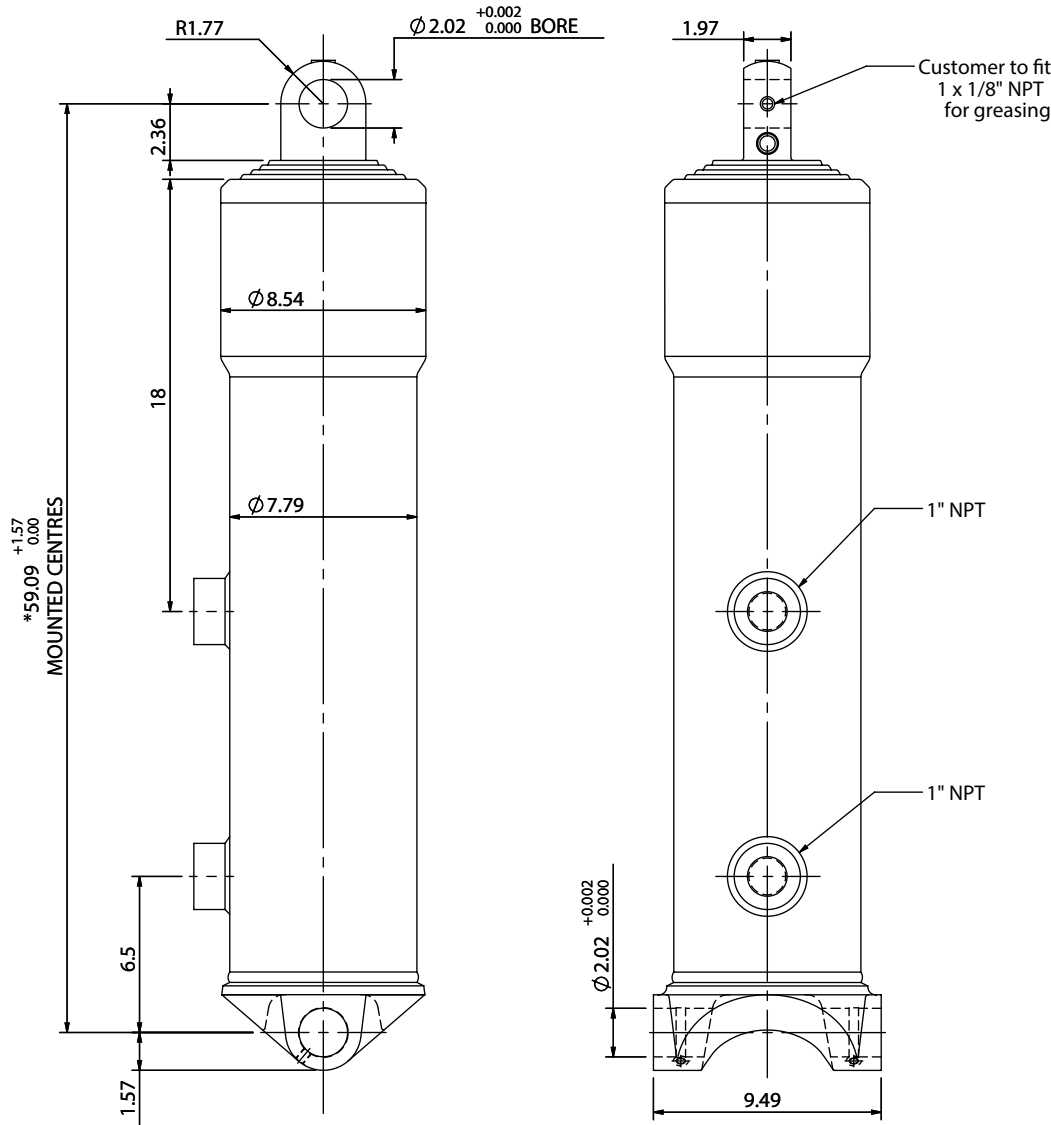


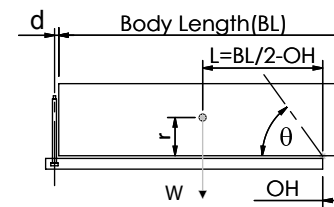
Cylinder 4 stage front end with plain eye

CS17EE404566A495



SPECIFICATION		TIPPING CAPACITY : 43-67 TONS***		
Stage	Diameter	Length	Stroke	Swept Volume
-	-	-	-	-
-	-	-	-	-
0	7.80	51.97	-	-
1	6.93	52.76	44.09	7.1
2	6.10	52.76	44.76	5.5
3	5.35	52.76	45.16	4.5
4	4.61	52.76	45.75	3.2
			Total (+0.2/-0.4)	179.76
Final stroke reduced by		0.00	Priming Volume	5.3
Cylinder Mass (lb)		456	Total Volume (US gal)	25.6
Maximum Pressure (PSI)		2200	Max. first stage thrust	24

***TIPPING CAPACITY AT WORKING PRESSURE



BODY LENGTH (BL) ft						OH Inches
19	20	21	19	20	21	
46	49°	44	46°	43	44°	6
54	52°	51	49°	49	47°	18
67	55°	61	52°	56	50°	30

$d = 0$; $r = 35.5$; Working Pressure 1750 PSI

For guidance only;
Higher working pressures and tipping capacities may be possible.
To check your application email - applications@edbro.co.uk

NOTES

- This cylinder is for lifting purposes only and side load conditions should be avoided
- Cylinder is painted in primer paint to RAL5013
- Refer to www.edbro.com for:-
 - Bracket details
 - Installation instructions that must be observed
 - Correct oil selection
 - An explanation of tipping capacity

*Includes 0.4" Pull Out. Last Stage Chrome Plated