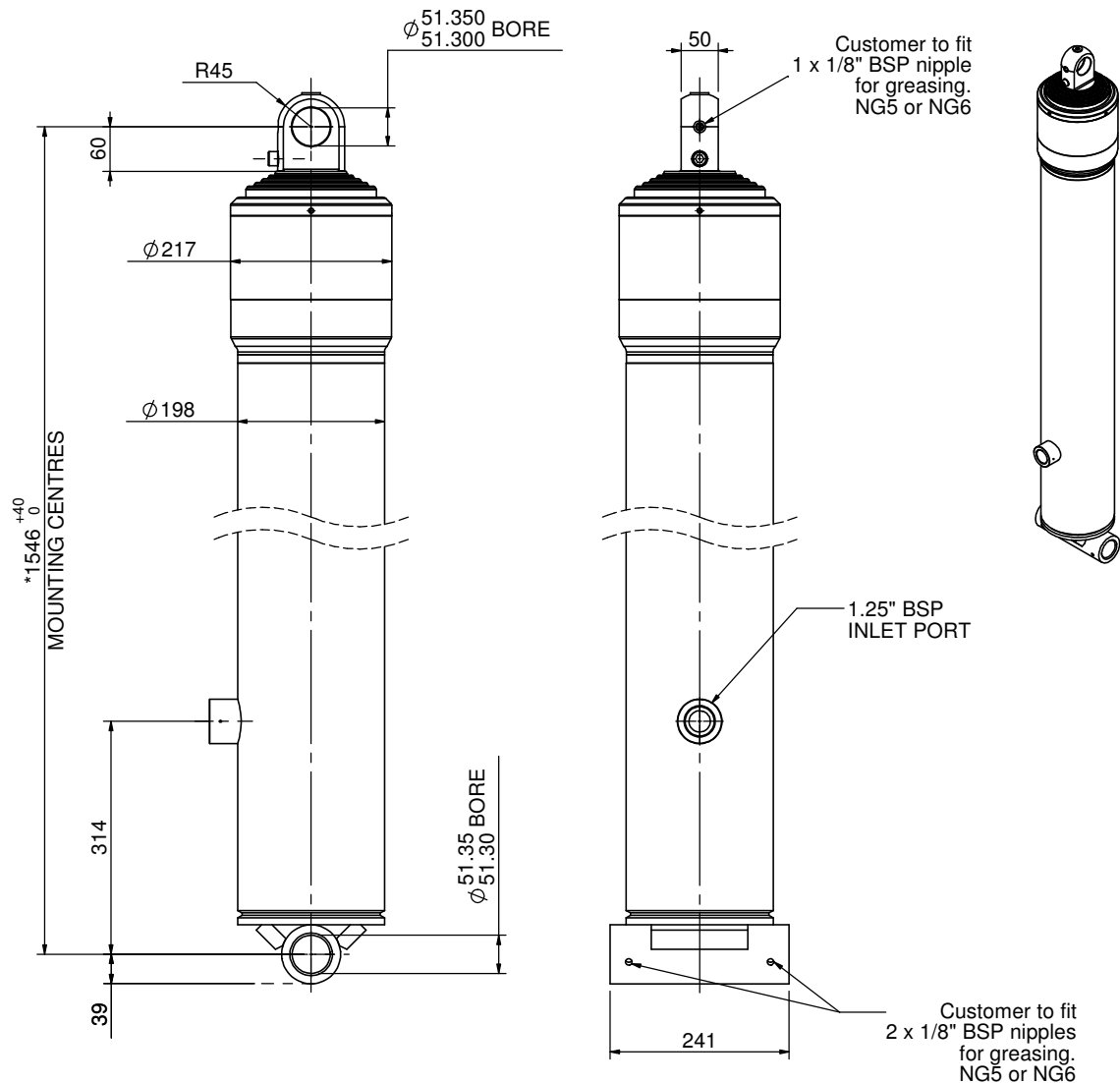


# Cylinder 5 stage front end with plain eye



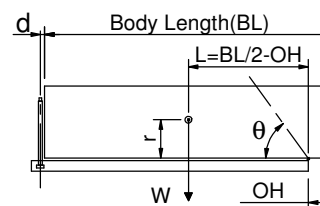
\*Includes 10mm Pull Out.  
Last Stage Chrome Plated

# CS17EE505280B529

## SPECIFICATION TIPPING CAPACITY : 29-40 TONNES\*\*\*

Stage	Diameter	Length	Stroke	Swept Volume
-	-	-	-	-
0	198	1370	-	-
1	176	1390	1170	28
2	155	1390	1187	22
3	136	1390	1197	17
4	117	1390	1212	13
5	98	1390	517	4
Total (+5/-10)			5283	84
Final stroke reduced by	700	Priming Volume		16
Cylinder Mass (Kg)	198	Total Volume (Litres)		100
Maximum Pressure (Bar)	190	Max. first stage thrust		265 KN

## \*\*\*TIPPING CAPACITY AT WORKING PRESSURE



BODY LENGTH (BL)						OH
7620		8077		8534		
32	48°	30	45°	29	42°	150
35	50°	33	47°	31	44°	450
40	53°	36	49°	34	46°	750

d = 0; r = 900; Working Pressure 138 bar

### For guidance only;

Higher working pressures and tipping capacities may be possible.  
To check your application email - [applications@edbro.co.uk](mailto:applications@edbro.co.uk)

## NOTES

- This cylinder is for lifting purposes only and side load conditions should be avoided
- Cylinder is painted in primer paint to RAL5013
- Refer to [www.edbro.com](http://www.edbro.com) for:-
  - Bracket details
  - Installation instructions that must be observed
  - Correct oil selection
  - An explanation of tipping capacity



**EDBRO Ltd.**  
Edbro House, Nelson Street, Bolton, England, BL3 2JJ  
Tel +44 (0) 1204 528888 Fax +44 (0) 1204 531957  
Email: [sales@edbro.com](mailto:sales@edbro.com) Web: [www.edbro.com](http://www.edbro.com)

Technical Specifications are subject to change without notice  
Date Created/Updated: 16 August 2021  
Refer [www.edbro.com](http://www.edbro.com) to confirm latest specification  
All dimensions are in 'mm', unless otherwise stated

