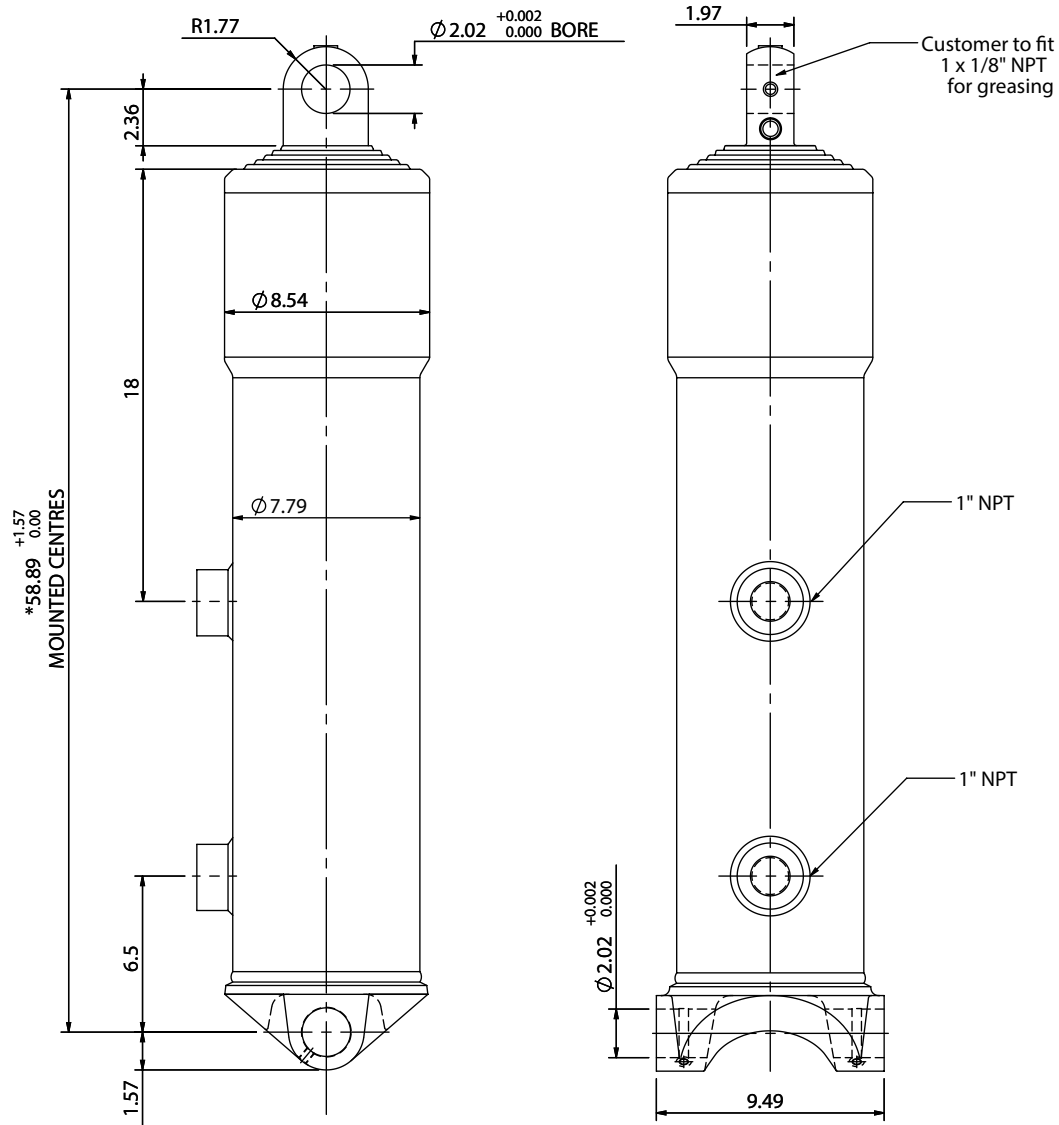


Cylinder 5 stage front end with plain eye

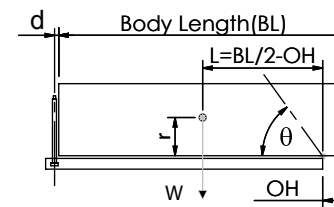


*Includes 0.4" Pull Out. Last Stage Chrome Plated

CS17EE505733A495

SPECIFICATION		TIPPING CAPACITY : 32-47 TONS***		
Stage	Diameter	Length	Stroke	Swept Volume
-	-	-	-	-
0	7.80	51.97	-	-
1	6.93	52.76	44.09	7.1
2	6.10	52.76	44.76	5.5
3	5.35	52.76	45.16	4.5
4	4.61	52.76	45.75	3.2
5	3.86	52.76	45.94	2.4
Total (+0.2/-0.4)			225.7	22.7
Final stroke reduced by	0.00	Priming Volume		4.9
Cylinder Mass (lb)	452	Total Volume (US gal)		27.6
Maximum Pressure (PSI)	2200	Max. first stage thrust		24

***TIPPING CAPACITY AT WORKING PRESSURE



$d = 0$; $r = 35.5$; Working Pressure 2000 PSI

For guidance only;
Higher working pressures and tipping capacities may be possible.
To check your application email - applications@edbro.co.uk

BODY LENGTH (BL) ft						OH Inches
24	25	27	24	25	27	
36	48°	34	45°	32	42°	6
41	51°	37	47°	35	44°	18
47	54°	42	49°	39	46°	30

— Tipping angle (θ)
— Body + payload mass, W (short ton)

NOTES

- This cylinder is for lifting purposes only and side load conditions should be avoided
- Cylinder is painted in primer paint to RAL5013
- Refer to www.edbro.com for:-
 - Bracket details
 - Installation instructions that must be observed
 - Correct oil selection
 - An explanation of tipping capacity