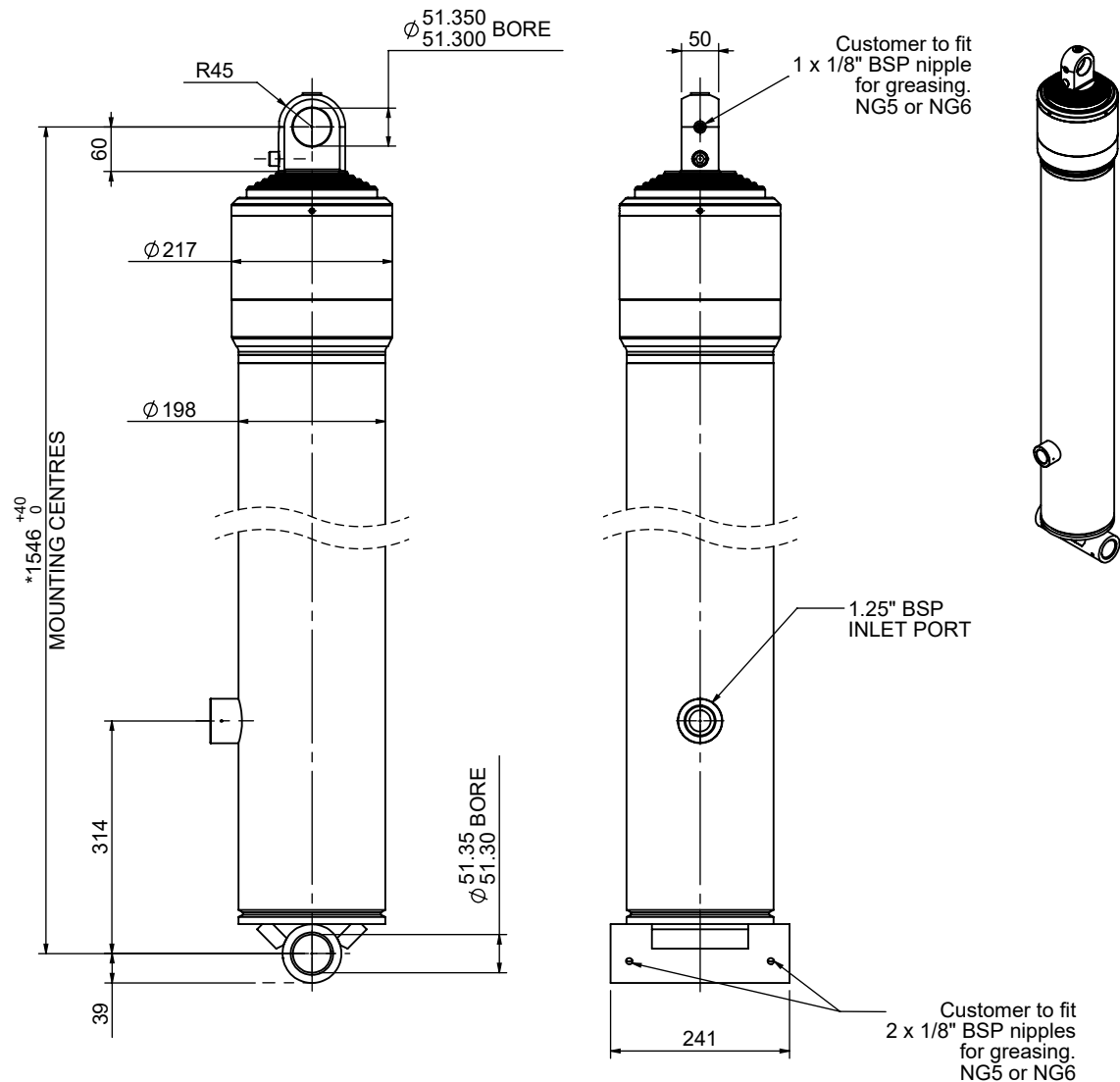


Cylinder 5 stage front end with plain eye



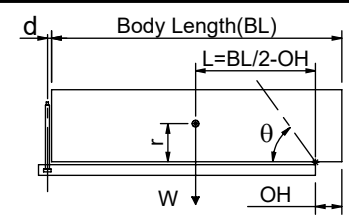
*Includes 10mm Pull Out.
Last Stage Chrome Plated

CS17EE505983B103

SPECIFICATION TIPPING CAPACITY : 29-40 TONNES***

Stage	Diameter	Length	Stroke	Swept Volume
-	-	-	-	-
0	198	1370	-	-
1	176	1390	1170	28
2	155	1390	1187	22
3	136	1390	1197	17
4	117	1390	1212	13
5	98	1390	1217	9
Total (+5/-10)			5983	89
Final stroke reduced by	0	Priming Volume	16	
Cylinder Mass (Kg)	198	Total Volume (Litres)	105	
Maximum Pressure (Bar)	190	Max. first stage thrust	265 KN	

***TIPPING CAPACITY AT WORKING PRESSURE



BODY LENGTH (BL)						OH
7620		8077		8534		
32	48°	30	45°	29	42°	150
35	50°	33	47°	31	44°	450
40	53°	36	49°	34	46°	750

d = 0; r = 900; Working Pressure 138 bar

For guidance only;
Higher working pressures and tipping capacities may be possible.
To check your application email - applications@edbro.co.uk

NOTES

- This cylinder is for lifting purposes only and side load conditions should be avoided
- Cylinder is painted in primer paint to RAL5013
- Refer to www.edbro.com for:-
 - Bracket details
 - Installation instructions that must be observed
 - Correct oil selection
 - An explanation of tipping capacity



EDBRO Ltd.
Edbro House, Nelson Street, Bolton, England, BL3 2JJ
Tel +44 (0) 1204 528888 Fax +44 (0) 1204 531957
Email: sales@edbro.com Web: www.edbro.com

Technical Specifications are subject to change without notice
Date Created/Updated: 16 July 2021
Refer www.edbro.com to confirm latest specification
All dimensions are in 'mm', unless otherwise stated