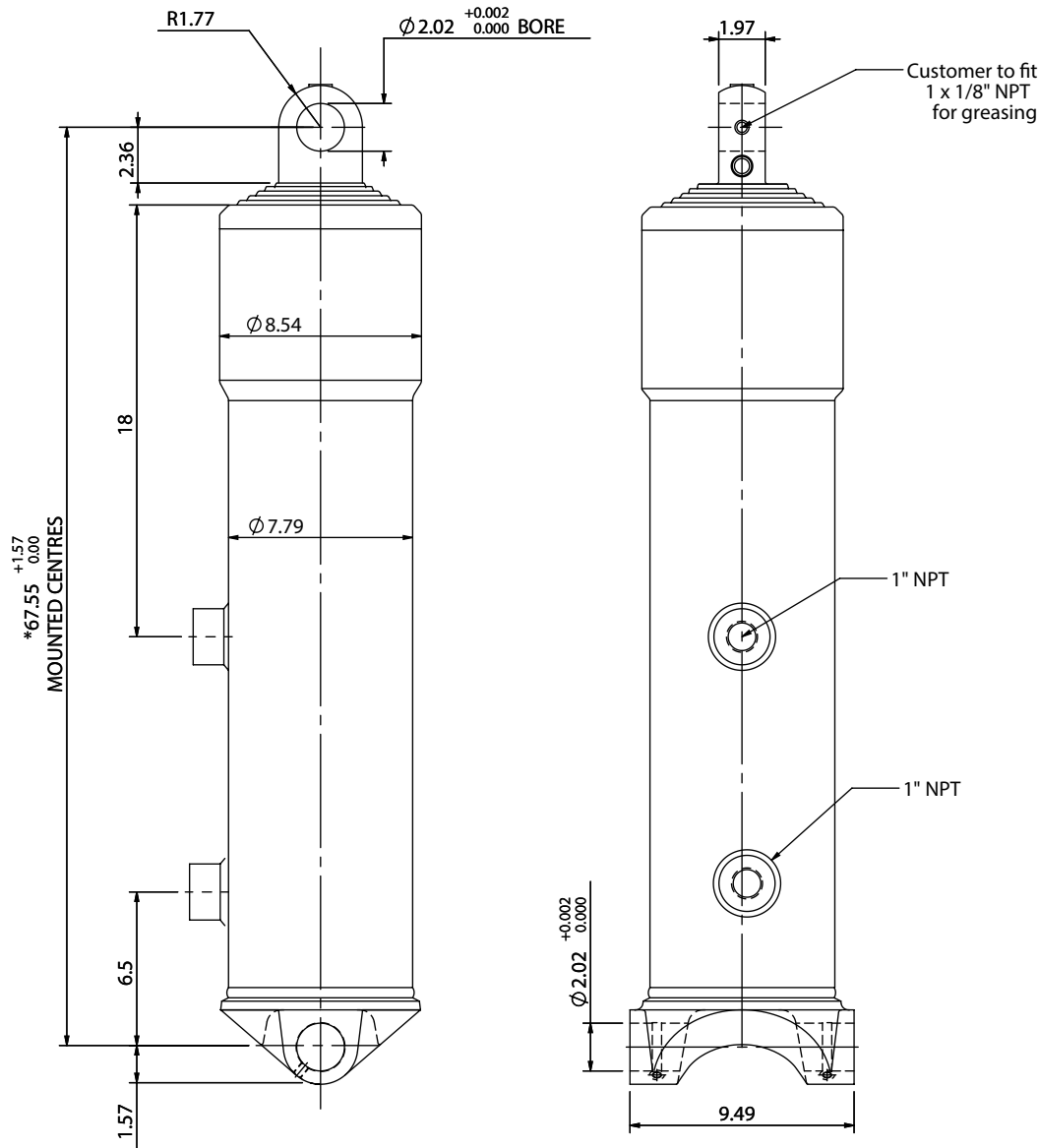


# Cylinder 5 stage front end with plain eye

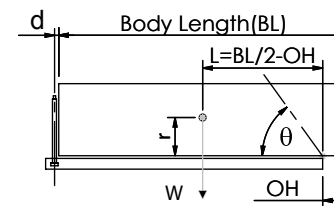


\*Includes 0.4" Pull Out. Last Stage Chrome Plated

# CS17EE506483A499

SPECIFICATION		TIPPING CAPACITY : 34-47 TONS***		
Stage	Diameter	Length	Stroke	Swept Volume
-	-	-	-	-
0	7.80	60.63	-	-
1	6.93	61.42	52.76	8.7
2	6.10	61.42	53.43	6.9
3	5.35	61.42	53.82	5.3
4	4.61	61.42	54.41	4.0
5	3.86	61.42	40.83	2.1
Total (+0.2/-0.4)			255.25	27
Final stroke reduced by	13.78	Priming Volume		5.6
Cylinder Mass (lb)	476	Total Volume (US gal)		32.6
Maximum Pressure (PSI)	2200	Max. first stage thrust		24

### \*\*\*TIPPING CAPACITY AT WORKING PRESSURE



BODY LENGTH (BL) ft					OH Inches	
26	28	30	32	34		
37	50°	34	47°		6	
41	52°	37	48°	35	45°	18
47	54°	42	51°	39	47°	30

$d = 0$ ;  $r = 35.5$ ; Working Pressure 2000 PSI

For guidance only;  
Higher working pressures and tipping capacities may be possible.  
To check your application email - [applications@edbro.co.uk](mailto:applications@edbro.co.uk)

### NOTES

- This cylinder is for lifting purposes only and side load conditions should be avoided
- Cylinder is painted in primer paint to RAL5013
- Refer to [www.edbro.com](http://www.edbro.com) for:-
  - Bracket details
  - Installation instructions that must be observed
  - Correct oil selection
  - An explanation of tipping capacity