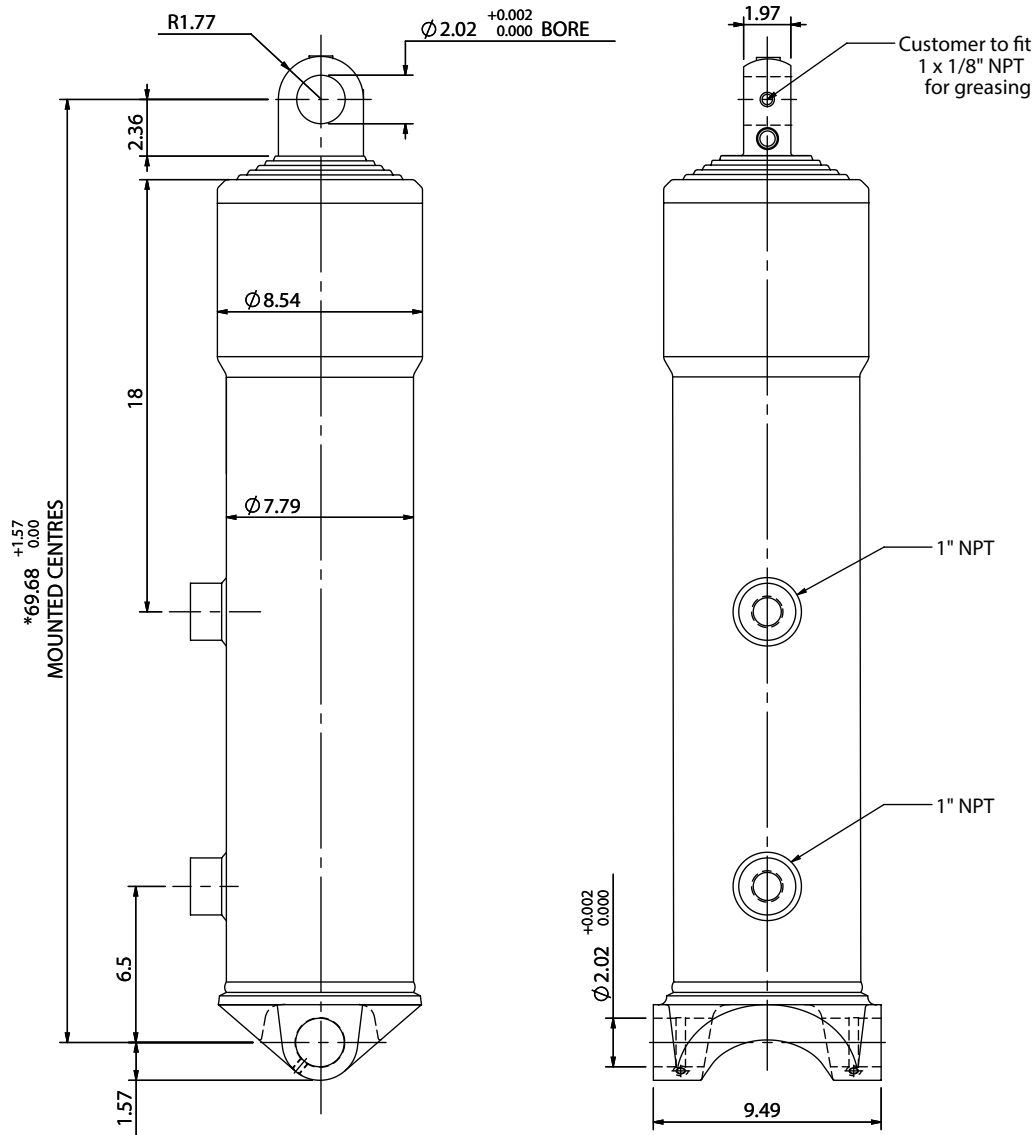


# Cylinder 5 stage front end with plain eye

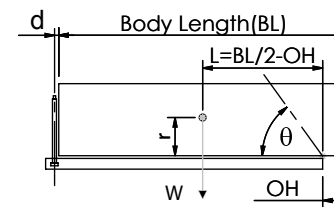


\*Includes 0.4" Pull Out. Last Stage Chrome Plated

# CS17EE506733A499

SPECIFICATION		TIPPING CAPACITY : 24-34 TONS***		
Stage	Diameter	Length	Stroke	Swept Volume
-	-	-	-	-
0	7.80	62.60	-	-
1	6.93	63.39	54.72	9.0
2	6.10	63.39	55.39	7.1
3	5.35	63.39	55.79	5.5
4	4.61	63.39	56.38	4.0
5	3.86	63.39	42.80	2.1
			Total (+0.2/-0.4)	27.7
Final stroke reduced by	13.78	Priming Volume		5.8
Cylinder Mass (lb)	502	Total Volume (US gal)		33.5
Maximum Pressure (PSI)	2200	Max. first stage thrust		24

## \*\*\*TIPPING CAPACITY AT WORKING PRESSURE



$d = 0$ ;  $r = 35.5$ ; Working Pressure 1500 PSI

For guidance only;

Higher working pressures and tipping capacities may be possible.

To check your application email - [applications@edbro.co.uk](mailto:applications@edbro.co.uk)

BODY LENGTH (BL) ft						OH Inches
27	29	30	27	29	30	
28	50°	25	47°	24	44°	6
31	52°	28	49°	26	46°	18
34	55°	31	51°	29	48°	30

Tipping angle ( $\theta$ )  
Body + payload mass, W (short ton)

## NOTES

- This cylinder is for lifting purposes only and side load conditions should be avoided
- Cylinder is painted in primer paint to RAL5013
- Refer to [www.edbro.com](http://www.edbro.com) for:
  - Bracket details
  - Installation instructions that must be observed
  - Correct oil selection
  - An explanation of tipping capacity