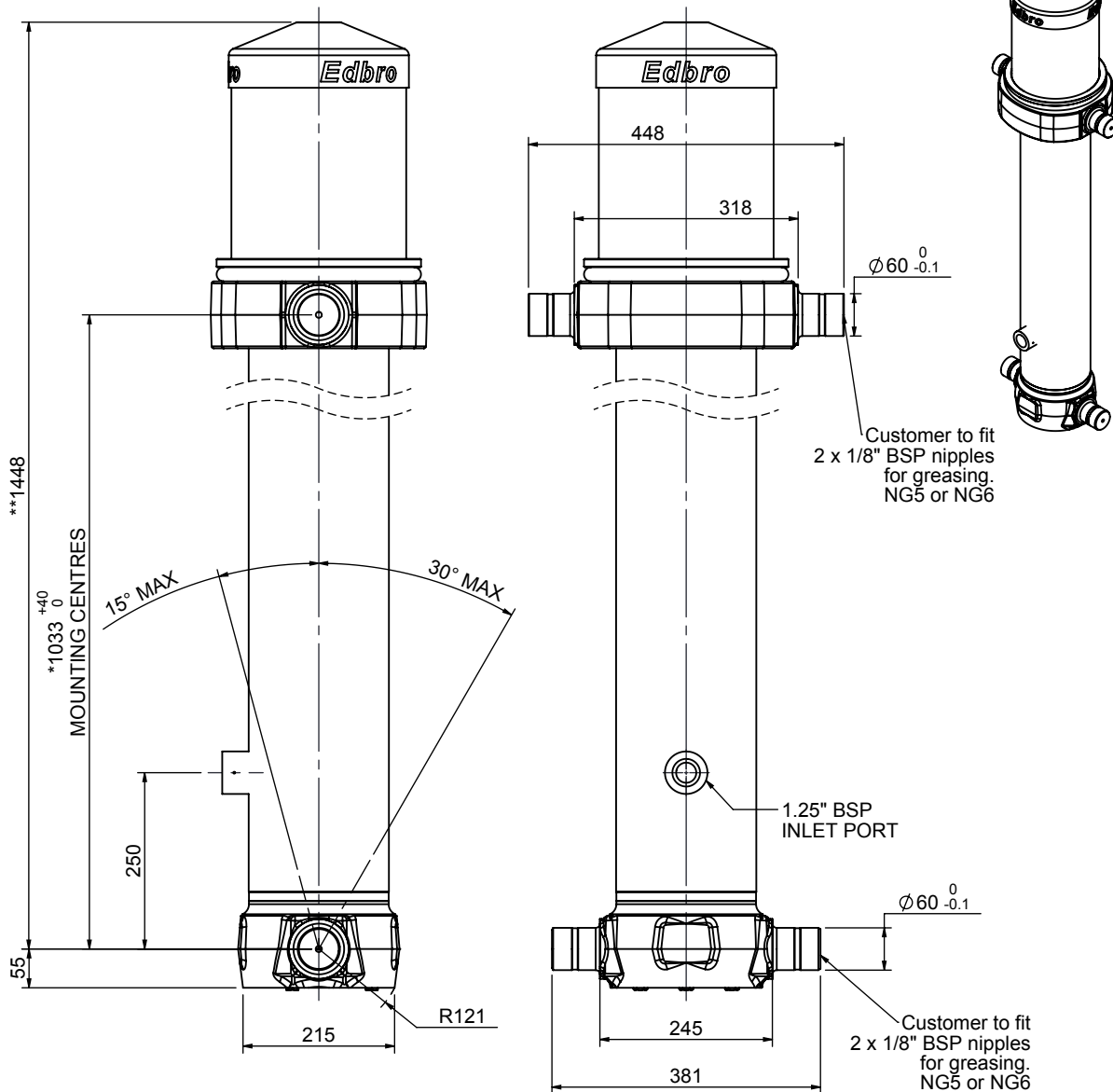


Cylinder 5 stage front end with outer cover

**ALLOW 50mm TO REMOVE CAP FOR SERVICING



*Includes 7mm Pull Out.

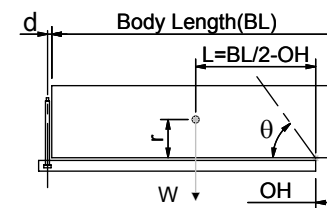
CS17L055033B25R15

SPECIFICATION

TIPPING CAPACITY : 26-50 TONNES***

Stage	Diameter	Length	Stroke	Swept Volume
OUTER COVER	248	380	-	-
0	199	1375	-	-
1	176	1340	1120	27
2	155	1340	1137	21
3	136	1340	1147	17
4	117	1340	1162	12
5	98	1340	467	4
Total (+5/-10)			5033	81
Final stroke reduced by	700	Priming Volume	17.3	
Cylinder Mass (Kg)	240	Total Volume (Litres)	98.3	
Maximum Pressure (Bar)	190	Max. first stage thrust	200 KN	

***TIPPING CAPACITY AT WORKING PRESSURE



BODY LENGTH (BL)						OH
6250		6750		7250		
32	48°	29	44°	26	41°	150
39	50°	33	46°	29	42°	450
50	53°	39	48°	34	45°	750

d = 229; r = 900; Working Pressure 110 bar

Tipping angle (θ)

Body + payload mass, W (tonne)

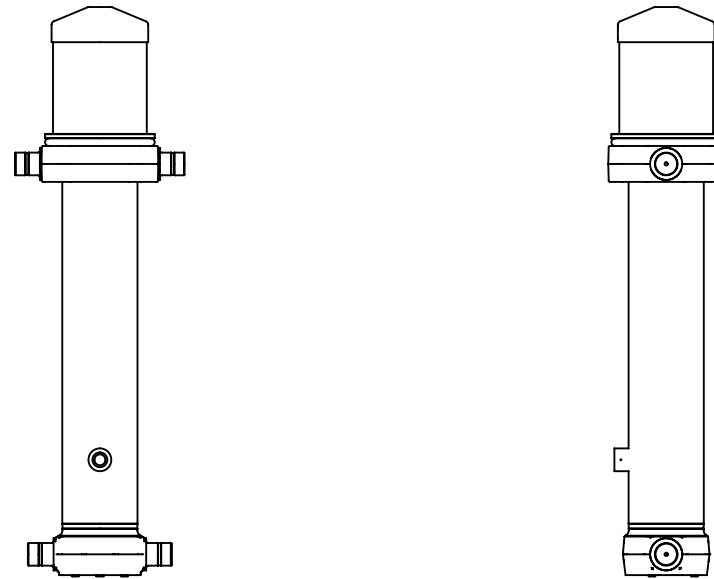
For guidance only;

Higher working pressures and tipping capacities may be possible.

To check your application email - applications@edbro.co.uk

NOTES

1. This cylinder is for lifting purposes only and side load conditions should be avoided
2. Cylinder is painted in primer paint to RAL5013
3. Refer to www.edbro.com for;-
 - Bracket details
 - Installation instructions that must be observed
 - Correct oil selection
 - An explanation of tipping capacity



CS17L055033B25R15