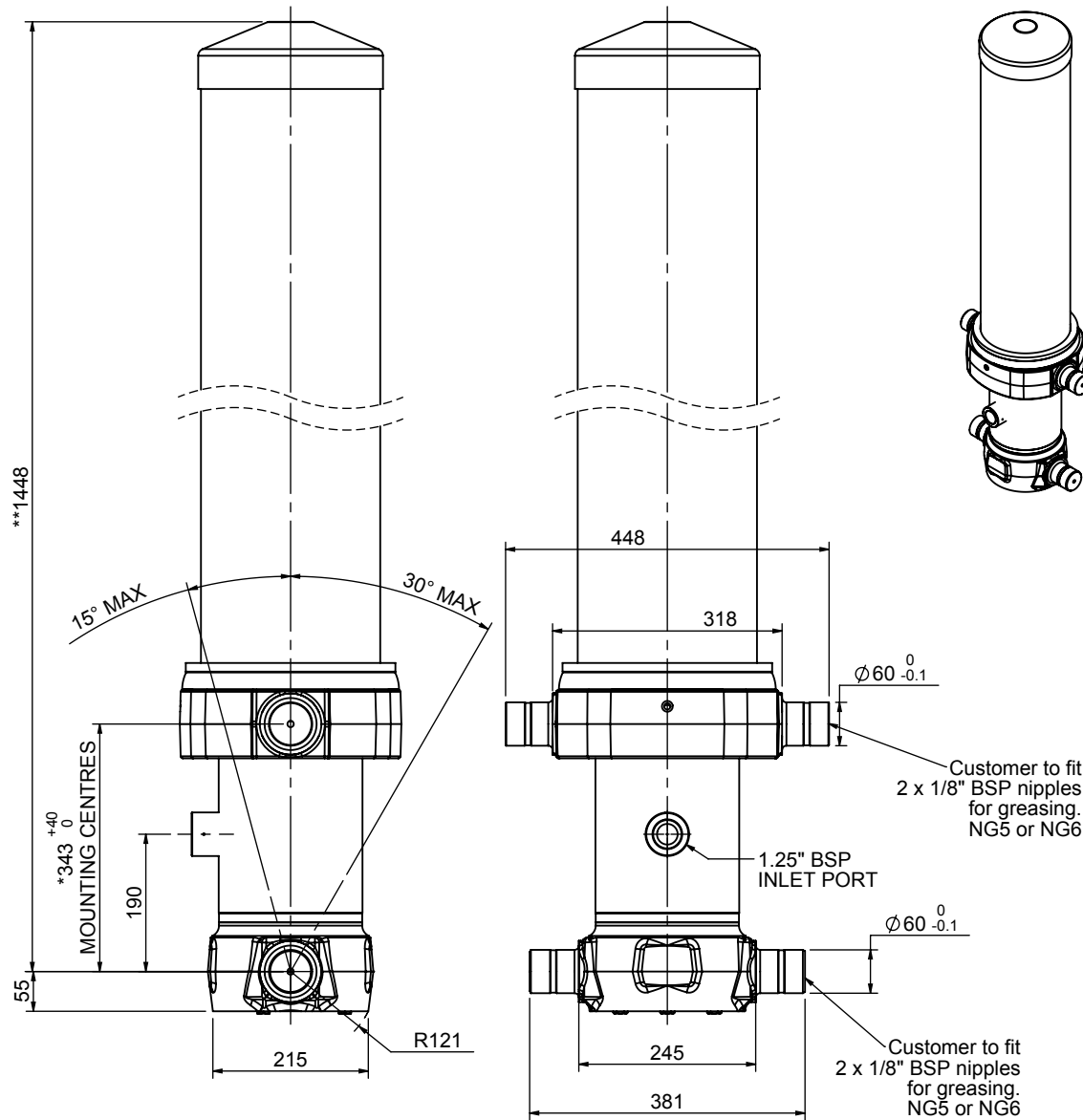


# Cylinder 5 stage front end with outer cover

\*\*ALLOW 50mm TO REMOVE CAP FOR SERVICING



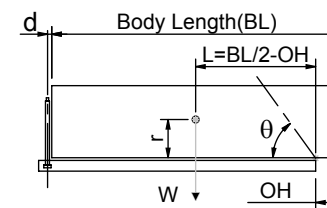
\*Includes 7mm Pull Out.

# CS17L055733B19A11

SPECIFICATION TIPPING CAPACITY : 33-45 TONNES\*\*\*

Stage	Diameter	Length	Stroke	Swept Volume
OUTER COVER	248	1070	-	-
0	199	1375	-	-
1	176	1340	1120	27
2	155	1340	1137	21
3	136	1340	1147	17
4	117	1340	1162	12
5	98	1340	1167	9
Total (+5/-10)			5733	86
Final stroke reduced by	0	Priming Volume	17.8	
Cylinder Mass (Kg)	257	Total Volume (Litres)	103.8	
Maximum Pressure (Bar)	190	Max. first stage thrust	200 KN	

\*\*\*TIPPING CAPACITY AT WORKING PRESSURE



BODY LENGTH (BL)						OH
7000		7500		8000		
34	48°	31	45°	30	42°	150
38	50°	35	47°	32	43°	450
45	53°	39	49°	36	45°	750

d = 229; r = 900; Working Pressure 135 bar

Tipping angle (theta)  
Body + payload mass, W (tonne)

**For guidance only;**

Higher working pressures and tipping capacities may be possible.  
To check your application email - [applications@edbro.co.uk](mailto:applications@edbro.co.uk)

## NOTES

1. This cylinder is for lifting purposes only and side load conditions should be avoided
2. Cylinder is painted in primer paint to RAL5013
3. Refer to [www.edbro.com](http://www.edbro.com) for:-
  - Bracket details
  - Installation instructions that must be observed
  - Correct oil selection
  - An explanation of tipping capacity



**JUST UK LTD**  
EDBRO Hse, Nelson Street, Bolton, England, BL3 2JJ  
Tel +44 (0) 1204 528888 Fax +44 (0) 1204 531957  
Email: [sales@internet-world.com](mailto:sales@internet-world.com) Web: [www.edbro.com](http://www.edbro.com)

Technical Specifications are subject to change without notice  
Date Created/Updated: 17 November 2016  
Refer [www.edbro.com](http://www.edbro.com) to confirm latest specification  
All dimensions are in 'mm', unless otherwise stated