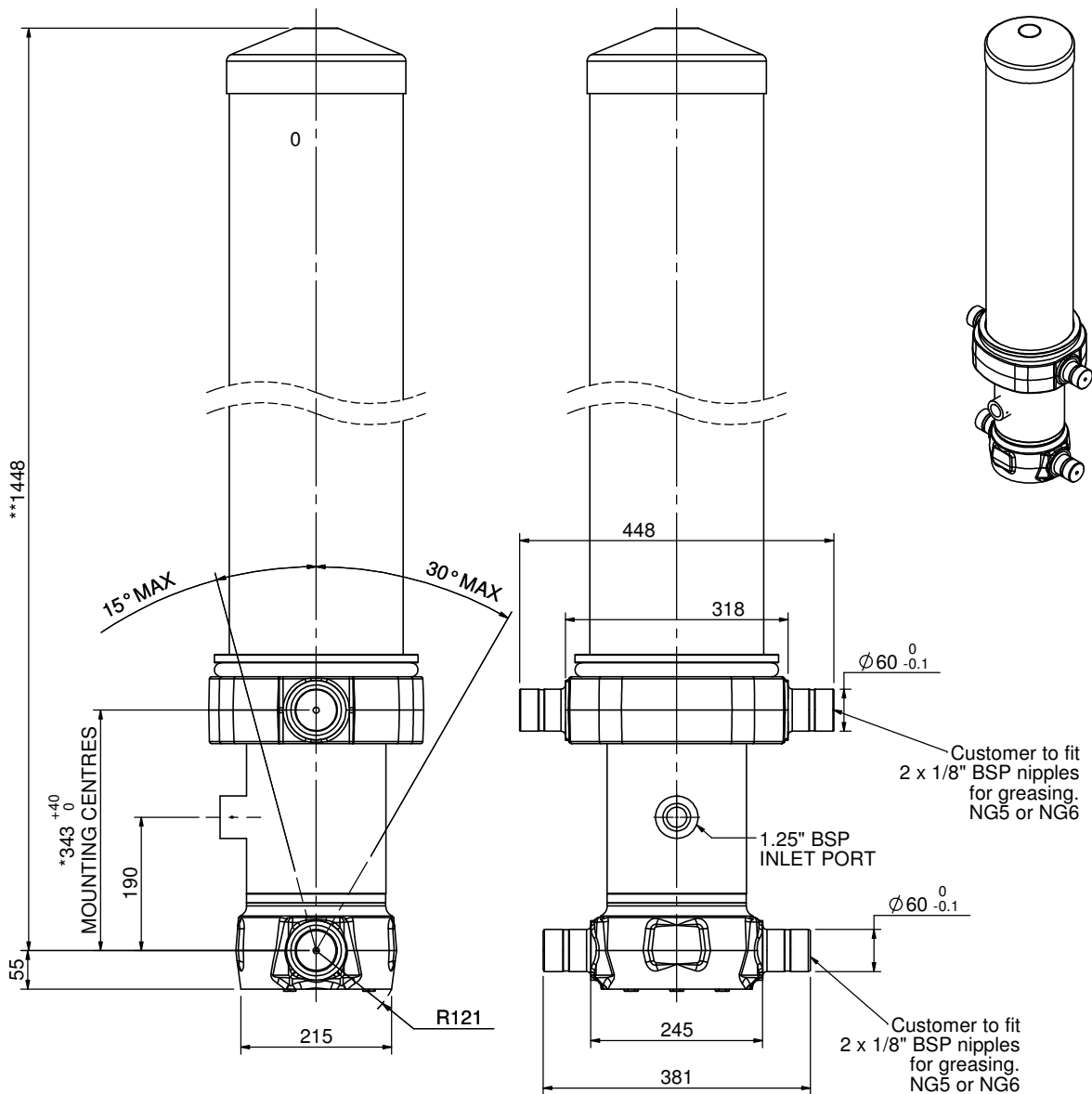


Cylinder 5 stage front end with outer cover

**ALLOW 50mm TO REMOVE CAP FOR SERVICING



*Includes 7mm Pull Out.
All Stages Chrome Plated

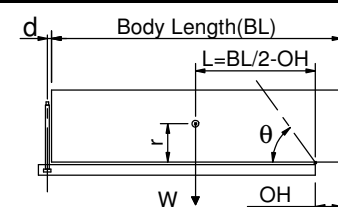
CS17L055733B19A11C

SPECIFICATION

TIPPING CAPACITY : 33-45 TONNES***

Stage	Diameter	Length	Stroke	Swept Volume
OUTER COVER	248	1070	-	-
0	199	1375	-	-
1	176	1340	1120	27
2	155	1340	1137	21
3	136	1340	1147	17
4	117	1340	1162	12
5	98	1340	1167	9
Total (+5/-10)			5733	86
Final stroke reduced by	0	Priming Volume	17.8	
Cylinder Mass (Kg)	256	Total Volume (Litres)	103.8	
Maximum Pressure (Bar)	190	Max. first stage thrust	200 KN	

***TIPPING CAPACITY AT WORKING PRESSURE



BODY LENGTH (BL)						OH
7000		7500		8000		
34	48°	31	45°	30	42°	150
38	50°	35	47°	32	43°	450
45	53°	39	49°	36	45°	750

d = 229; r = 900; Working Pressure 135 bar
 For guidance only;
 Higher working pressures and tipping capacities may be possible.
 To check your application email - applications@edbro.co.uk

NOTES

1. This cylinder is for lifting purposes only and side load conditions should be avoided
2. Cylinder is painted in primer paint to RAL5013
3. Refer to www.edbro.com for:-
 - Bracket details
 - Installation instructions that must be observed
 - Correct oil selection
 - An explanation of tipping capacity



Edbro plc
 Nelson Street, Bolton, England, BL3 2JJ
 Tel +44 (0) 1204 528888 Fax +44 (0) 1204 531957
 Email: postmaster@edbro.com Web: www.edbro.com

Technical Specifications are subject to change without notice
 Date Created/Updated: 19 August 2015
 Refer www.edbro.com to confirm latest specification
 All dimensions are in 'mm', unless otherwise stated